



PARTS CATALOG

Published

2008/7 (Jul.)

0CNP3-G66100

SPECIFICATIONS

Model		YRM831VH		
Size of the body	The total length	mm	1800	
	The total width	mm	950	
	The total height	mm	900	
	The lowest height from the ground	mm	120	
	The seat height from the ground	mm	510	
Body weight		kg	240	
Mowing part	Cutting width		mm	830
	Rotation speed		rpm	1355(Right)
	Rotary blade foam			Fixed blade
	Cutting height		mm	50 - 85
Driving part	Tire	Front wheel	mm	AG350 - 7
		Rear wheel	mm	AG16×700×8
	Tread	Front wheel	mm	820
		Rear wheel	mm	760
	Wheel base		mm	1140
	The smallest rotation radius	Right	mm	1900
		Left	mm	1900
	Wheel drive method			HST rear wheel drive
Forward movement speed		km/h	0 - 7.2	
Backward movement speed		km/h	0 - 2.8	
Operating system	Method of operation			Rack & Pinion method
	Parking brake			HST built - in disk brake
	Cutting height adjustment lever			4 level lever
	Engine start method		mm	Cell motor
	Diff			Oil pressure dynamic diff
Steering diameter		mm	380	
Battery			28A19L	
Engine	Make			Kawasaki
	Type			Vertical, air - cooled, 4 - cycle gasoline
	Output		hp	14
Clutch	Cutting part			Brake coupling belt tension

Note : This is a preliminary brochure and subject to change without notice.

CONTENTS

MODEL : YRM831 - (FC420V
PC NO : 0CNP3-G66100

Fig.No.	GROUP NAME
	ENGINE UNIT(FC420V-DG80)
1.	CYLINDER,CRANKCASE
2.	PISTON,CRANKSHAFT
3.	VALVE,CAMSHAFT
4.	LUBRICATION-EQUIPMENT
5.	COOLING-EQUIPMENT
6.	ELECTRIC-EQUIPMENT
7.	CONTROL-EQUIPMENT
8.	CARBURETOR
9.	AIR-FILTER,MUFFLER
10.	FUEL-TANK,FUEL-VALVE
11.	STARTER
12.	LABEL
13.	LABEL(SAFETY)

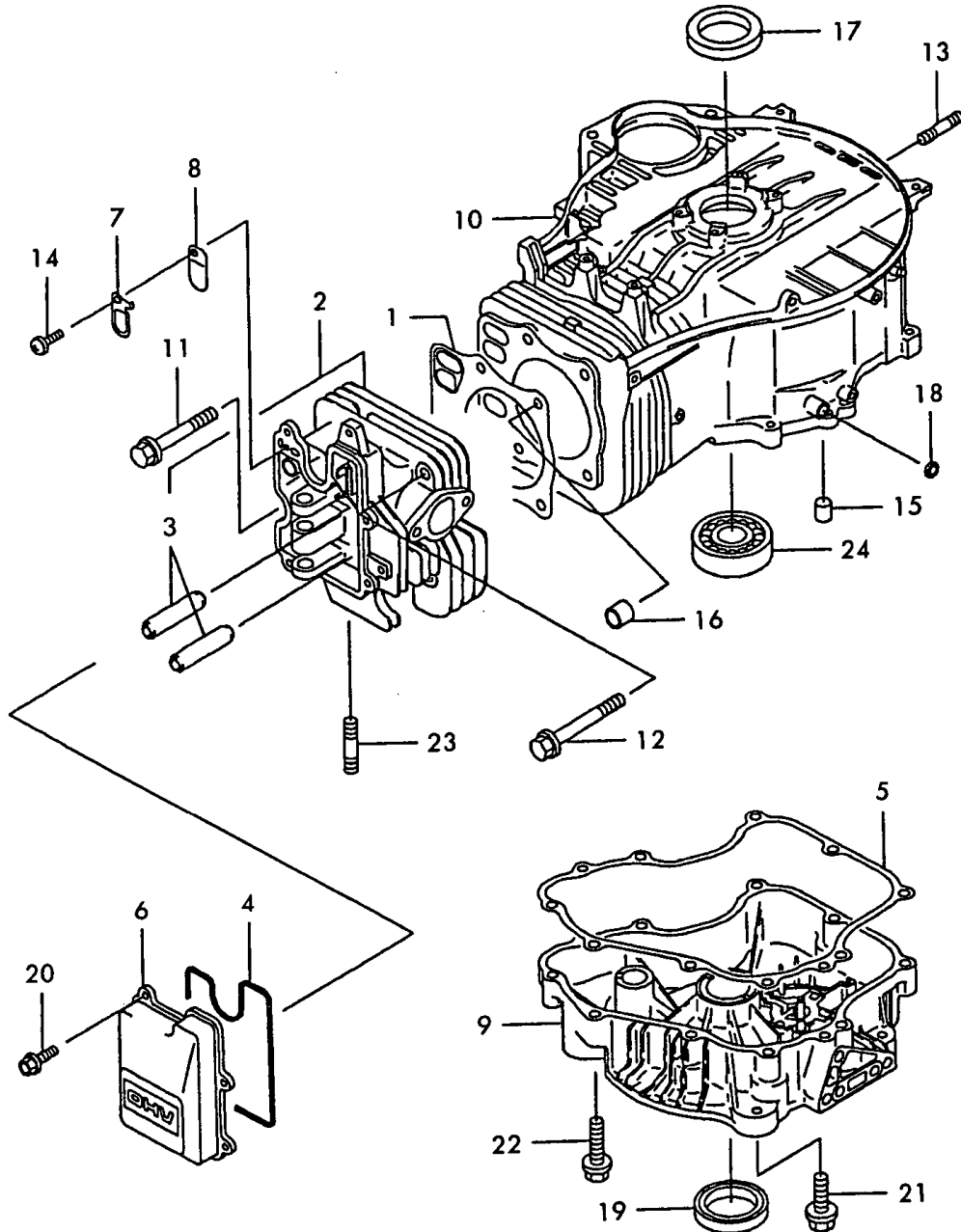
BODY SECTION

14.	FRONT WHEEL,STEERING
15.	ROTARY
16.	REAP HEIGHT ADJUSTMENT
17.	REAR WHEEL,HST,TRANSMISSION
18.	HST CONTROL
19.	FRAME,COVER,SEAT
20.	ENGINE RELATED
21.	LABELS
22.	LABELS(PRODUCT LIABILITY)

Fig.No.	GROUP NAME
---------	------------

Fig.1. CYLINDER,CRANKCASE

1. CYLINDER & CRANKCASE



(A)=FC420V-DG80

(B)=

(C)=

(D)=

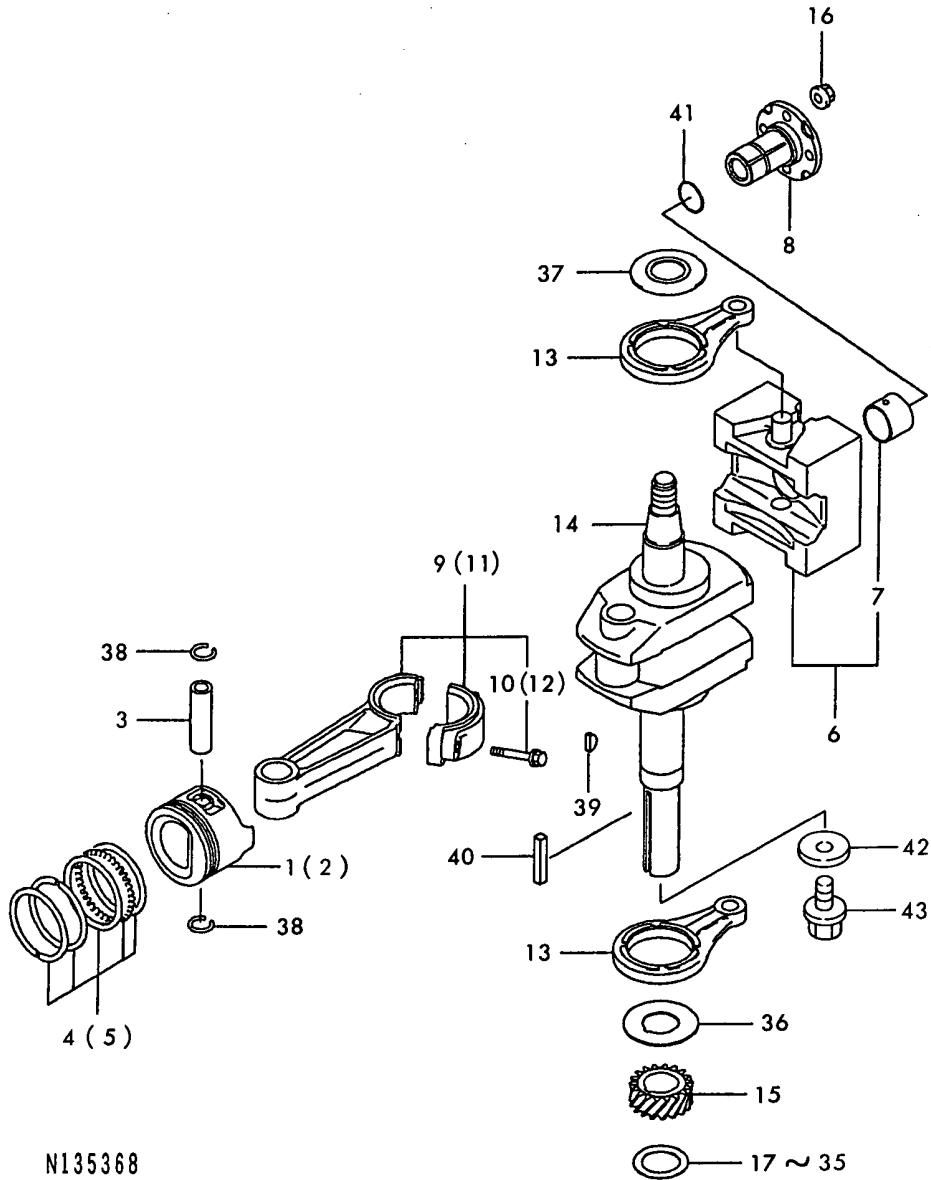
(E)=

(F)=

REF.	LEV.	PARTS NO.	DESCRIPTION	QTY						I	R
				(A)	(B)	(C)	(D)	(E)	(F)		
1	1	1Z1100-42096	GASKET-HEAD	1							
2	1	1Z1100-86026	HEAD-COMP-CYLINDER	1							
3	2	1Z4900-22107	GUIDE-VALVE	2							
4	1	1Z1100-92433	GASKET,ROCKER CASE	1							
5	1	1Z1100-92947	GASKET	1							
6	1	1Z1102-22070	CASE-ROCKER	1							
7	1	1Z1327-02055	PLATE	1							
8	1	1Z1612-62113	VALVE	1							
9	1	1Z4901-56174	COVER-CRANKCASE	1							
10	1	1Z4912-06106	CRANKCASE-COMP	1							
11	1	1Z9200-22273	BOLT	3							
12	1	1Z9200-22310	BOLT	2							
13	1	1Z9200-42083	STUD,6X14	4							
14	1	1Z9200-92308	SCREW	1							
15	1	1Z9204-31263	PIN	2							
16	1	1Z9204-31266	PIN	2							
17	1	1Z9204-92096	SEAL-OIL	1							
18	1	1Z9204-92097	SEAL, OIL	1							
19	1	1Z9204-92227	SEAL-OIL	1							
20	1	1Z130B-06140	BOLT-FLANGED	4							
21	1	26106-080252	BOLT M 8X 25 PLATED	4							
22	1	1Z130T-08450	BOLT-FLANGED	9							
23	1	26216-080202	STUD M 8X 20 PLATED	2							
24	1	24101-063074	BEARING	1							

Fig.2. PISTON,CRANKSHAFT

2. PISTON & CRANKSHAFT



N135368

Remarks
 (1) OVER-SIZE PART.
 (2) UNDER-SIZE PART.

OCNP3-G66100 2. PISTON,CRANKSHAFT

(A)=FC420V-DG80

(B)=

(C)=

(D)=

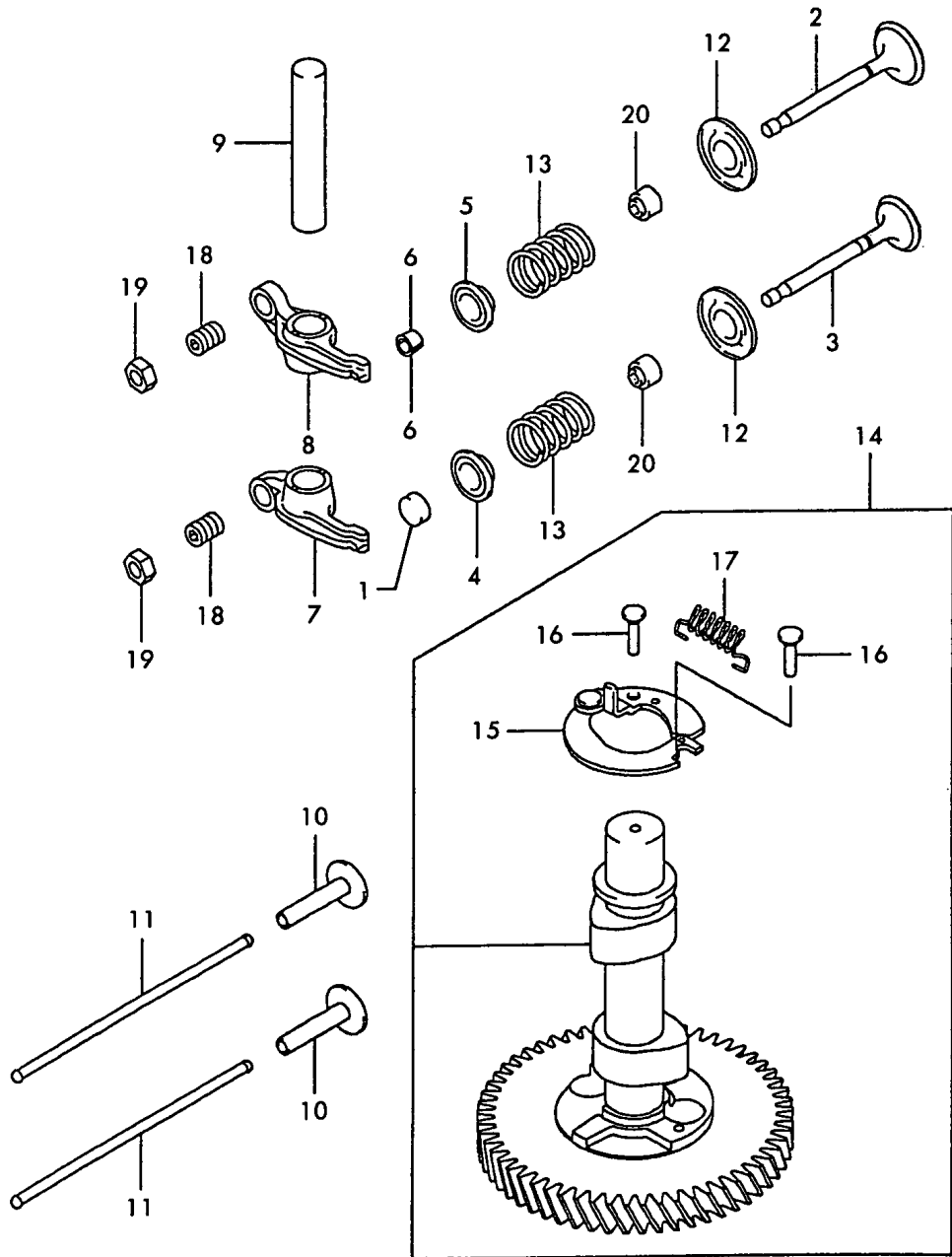
(E)=

(F)=

REF.	LEV.	PARTS NO.	DESCRIPTION	Q'TY						I	R
				(A)	(B)	(C)	(D)	(E)	(F)		
1	1	1Z1300-12130	PISTON-ENGINE	1							
2	1	1Z1302-92106	PISTON-ENGINE L,0.50	1							1
3	1	1Z1300-22078	PIN-PISTON	1							
4	1	1Z1300-86053	RINGSET-PISTON	1							
5	1	1Z1302-56020	RINGSET-PISTON L,0.5	1							1
6	1	1Z1304-26010	WEIGHT	1							
7	2	1Z9214-12112	BEARING-PLANE	1							
8	1	1Z1310-72088	SHAFT	1							
9	1	1Z1325-16039	ROD-CONNECTING	1							
10	2	1Z9215-02193	BOLT	2							
11	1	1Z1325-16041	ROD-CONNECTING 0.50	1							2
12	2	1Z9215-02193	BOLT	2							
13	1	1Z4610-22077	ROD	2							
14	1	1Z4911-92176	CRANKSHAFT-ASSY	1							
15	1	1Z5905-62101	GEAR-HELICAL	1							
16	1	1Z9201-51193	NUT	4							
17	1	1Z9202-52210	SHIM T=1.18	1							
18	1	1Z9202-52211	SHIM T=1.215	1							
19	1	1Z9202-52212	SHIM T=1.25	1							
20	1	1Z9202-52213	SHIM T=1.285	1							
21	1	1Z9202-52214	SHIM T=1.32	1							
22	1	1Z9202-52215	SHIM T=1.355	1							
23	1	1Z9202-52216	SHIM T=1.39	1							
24	1	1Z9202-52217	SHIM T=1.425	1							
25	1	1Z9202-52218	SHIM T=1.46	1							
26	1	1Z9202-52219	SHIM T=1.495	1							
27	1	1Z9202-52220	SHIM T=1.53	1							
28	1	1Z9202-52221	SHIM T=1.565	1							
29	1	1Z9202-52222	SHIM T=1.60	1							
30	1	1Z9202-52223	SHIM T=1.635	1							
31	1	1Z9202-52224	SHIM T=1.67	1							
32	1	1Z9202-52225	SHIM T=1.705	1							
33	1	1Z9202-52226	SHIM T=1.74	1							
34	1	1Z9202-52227	SHIM T=1.775	1							
35	1	1Z9202-52228	SHIM T=1.81	1							
36	1	1Z9202-62156	SPACER	1							
37	1	1Z9202-62160	SPACER	1							
38	1	1Z9203-60080	RING-SNAP	2							
39	1	1Z9203-82094	KEY	1							
40	1	1Z9203-82101	KEY	1							
41	1	1Z9205-52072	RING-O	1							
42	1	1Z9202-22194	WASHER 34X10.5X6	1							
43	1	1Z9200-22263	BOLT M10XP1.5X28	1							

Fig.3. VALVE,CAMSHAFT

3. VALVES & CAMSHAFT



OCNP3-G66100 3. VALVE,CAMSHAFT

(A)=FC420V-DG80

(B)=

(C)=

(D)=

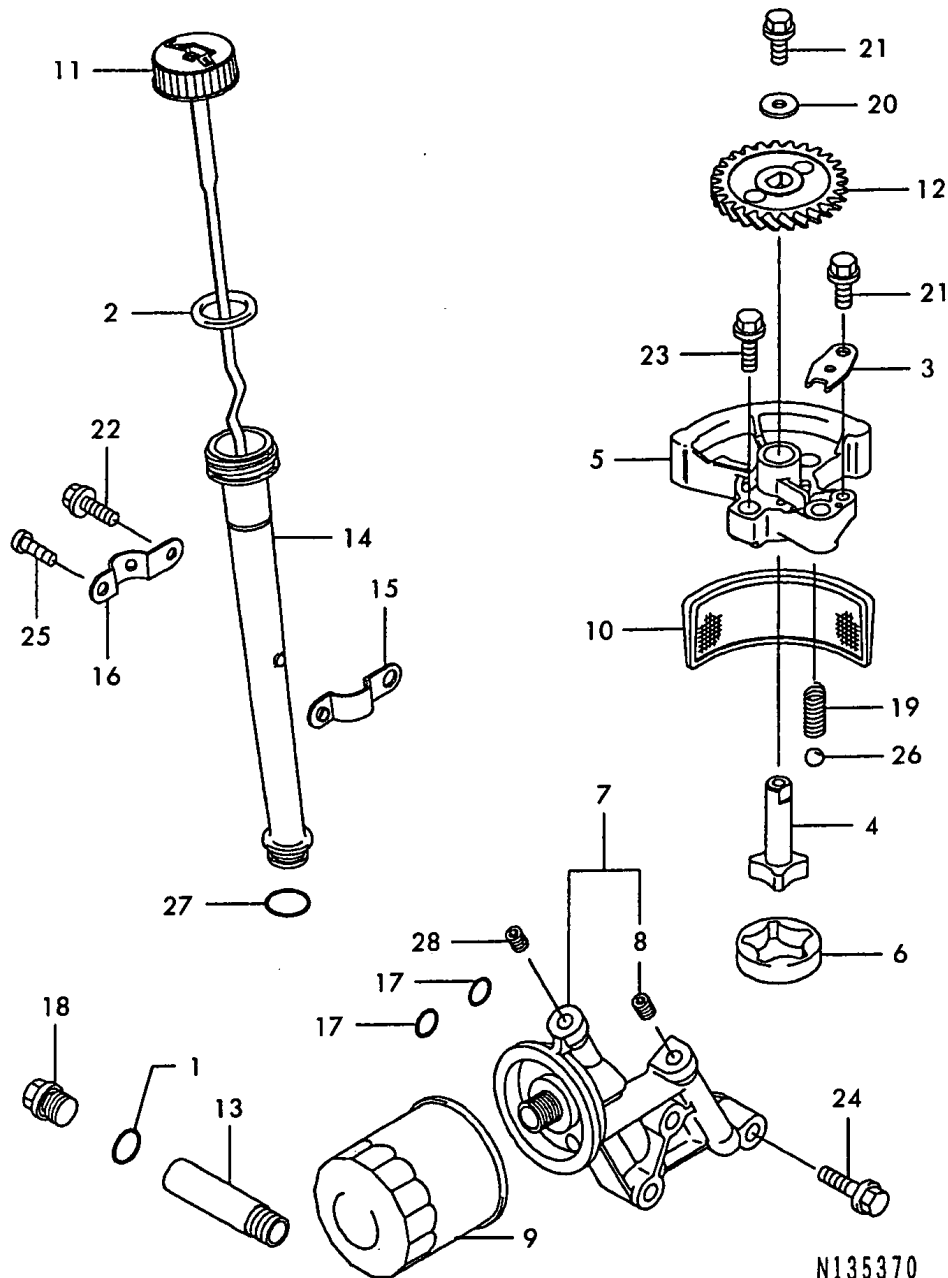
(E)=

(F)=

REF.	LEV.	PARTS NO.	DESCRIPTION	QTY						I	R
				(A)	(B)	(C)	(D)	(E)	(F)		
1	1	1Z1101-22189	CAP,VALVE	1							
2	1	1Z1200-42097	VALVE-INTAKE	1							
3	1	1Z1200-52086	VALVE-EXHAUST	1							
4	1	1Z1200-92058	RETAINER-VALVESPRING	1							
5	1	1Z1200-92060	RETAINER-VALVESPRING	1							
6	1	1Z1201-12052	COLLET	2							
7	1	1Z1201-62054	ARM-ROCKER	1							
8	1	1Z1201-62055	ARM-ROCKER	1							
9	1	1Z1202-02058	SHAFT-ROCKER	1							
10	1	1Z1203-22068	TAPPET	2							
11	1	1Z1311-62056	ROD-PUSH	2							
12	1	1Z1600-72052	SEAT-SPRING	2							
13	1	1Z4907-82076	SPRING-ENGINE VALVE	2							
14	1	1Z4911-82132	CAMSHAFT-COMP	1							
15	2	1Z2111-82083	DECOMPRESSOR	1							
16	2	1Z9204-32113	PIN	2							
17	2	1Z9214-42323	SPRING	1							
18	1	1Z9200-92182	SCREW	2							
19	1	1Z9201-52139	NUT	2							
20	1	1Z9204-92223	SEAL-OIL	2							

Fig.4. LUBRICATION-EQUIPMENT

4. LUBRICATING SYSTEM



N135370

OCNP3-G66100 4. LUBRICATION-EQUIPMENT

(A)=FC420V-DG80

(B)=

(C)=

(D)=

(E)=

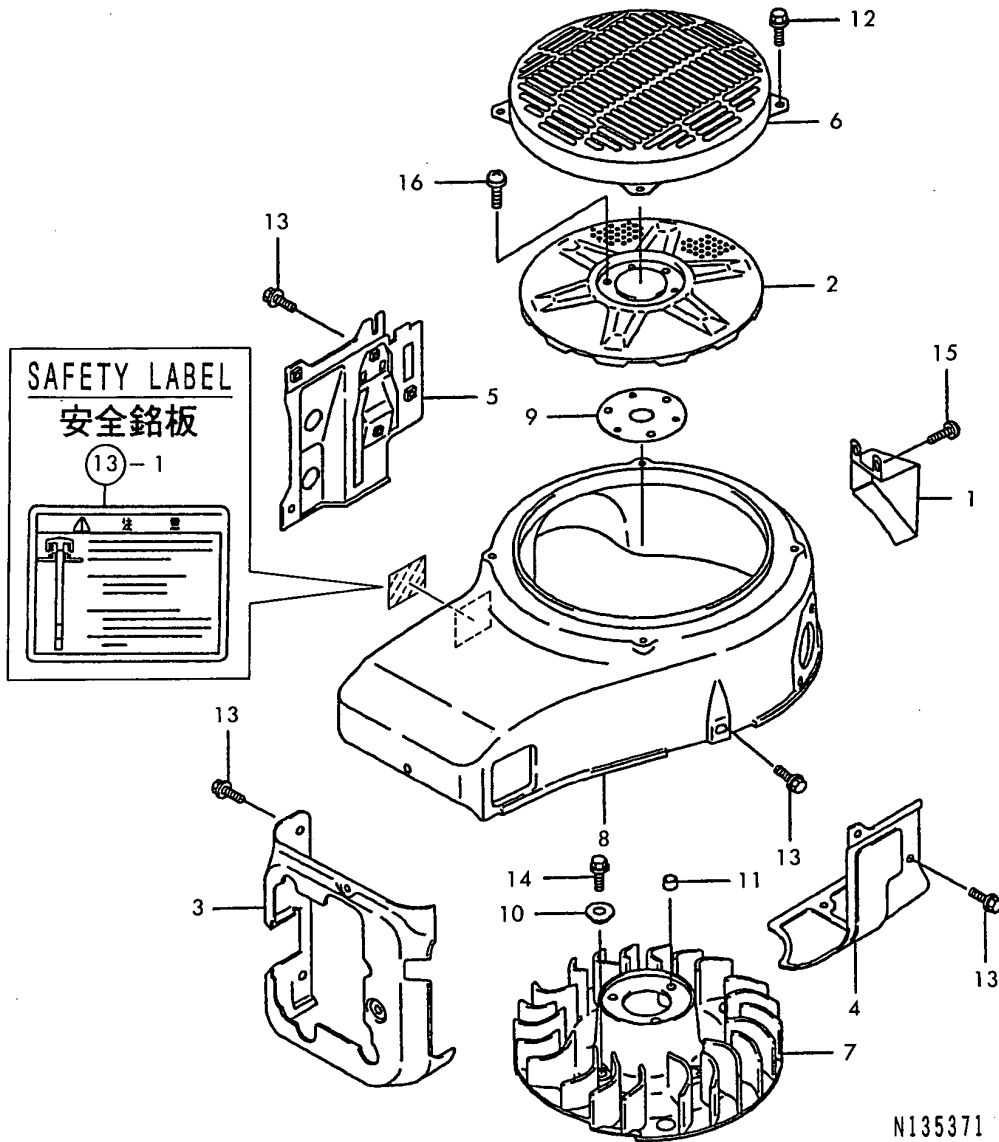
(F)=

REF.	LEV.	PARTS NO.	DESCRIPTION	QTY						I	R
				(A)	(B)	(C)	(D)	(E)	(F)		
1	1	1Z1100-92175	GASKET	1							
2	1	1Z1100-92346	GASKET,OIL GAUGE	1							
3	1	1Z1327-02054	PLATE	1							
4	1	1Z1608-22059	PUMP-ASSY-OIL	1							
5	1	1Z1614-22068	COVER-PUMP	1							
6	1	1Z1615-42052	ROTOR-PUMP	1							
7	1	1Z3106-46001	PIPE-COMP	1							
8	2	1Z9206-62211	PLUG	1							
9	1	1Z4906-52078	FILTER-OIL	1							
10	1	1Z4906-52073	FILTER-OIL	1							
11	1	1Z5200-52105	GAUGE	1							
12	1	1Z5905-62090	GEAR-HELICAL	1							
13	1	1Z5907-12063	JOINT	1							
14	1	1Z5923-12062	FILLER	1							
15	1	1Z9203-72199	CLAMP	1							
16	1	1Z9203-72200	CLAMP	1							
17	1	1Z9205-52073	RING-O	2							
18	1	1Z9206-62092	PLUG, DRAIN	1							
19	1	1Z9214-42391	SPRING	1							
20	1	1Z9220-02035	WASHER	1							
21	1	26106-060102	BOLT M 6X 10 PLATED	2							
22	1	1Z130B-06140	BOLT-FLANGED	1							
23	1	1Z130B-08300	BOLT	2							
24	1	26107-080402	BOLT M 8X 40	3							
25	1	26557-060082	SCREW M 6X 8	1							
26	1	24190-100001	BALL 5/16, STEEL	1							
27	1	1Z670D-20160	O RING	1							
28	1	1Z9206-62211	PLUG	1							

N:Old $\begin{matrix} \text{Yes} \\ \text{No} \end{matrix}$ New, Q:Old $\begin{matrix} \text{No} \\ \text{Yes} \end{matrix}$ New, R:Old $\begin{matrix} \text{Yes} \\ \text{Yes} \end{matrix}$ New, S:Old $\begin{matrix} \text{No} \\ \text{No} \end{matrix}$ New, W:Add, Z:Discontinued, F:Interchangeable by set, K:Q'ty Change

Fig.5. COOLING-EQUIPMENT

5. COOLING DEVICE



Remarks
 (1)WHEN ORDERING COVER,UPPER,PLEASE
 ORDER SAFETY LABEL(ITEM NO.13
 REF NO.1 PART NO. 1Z5603-12442)
 AND PUT IT ON THE COVER.

OCNP3-G66100 5. COOLING-EQUIPMENT

(A)=FC420V-DG80

(B)=

(C)=

(D)=

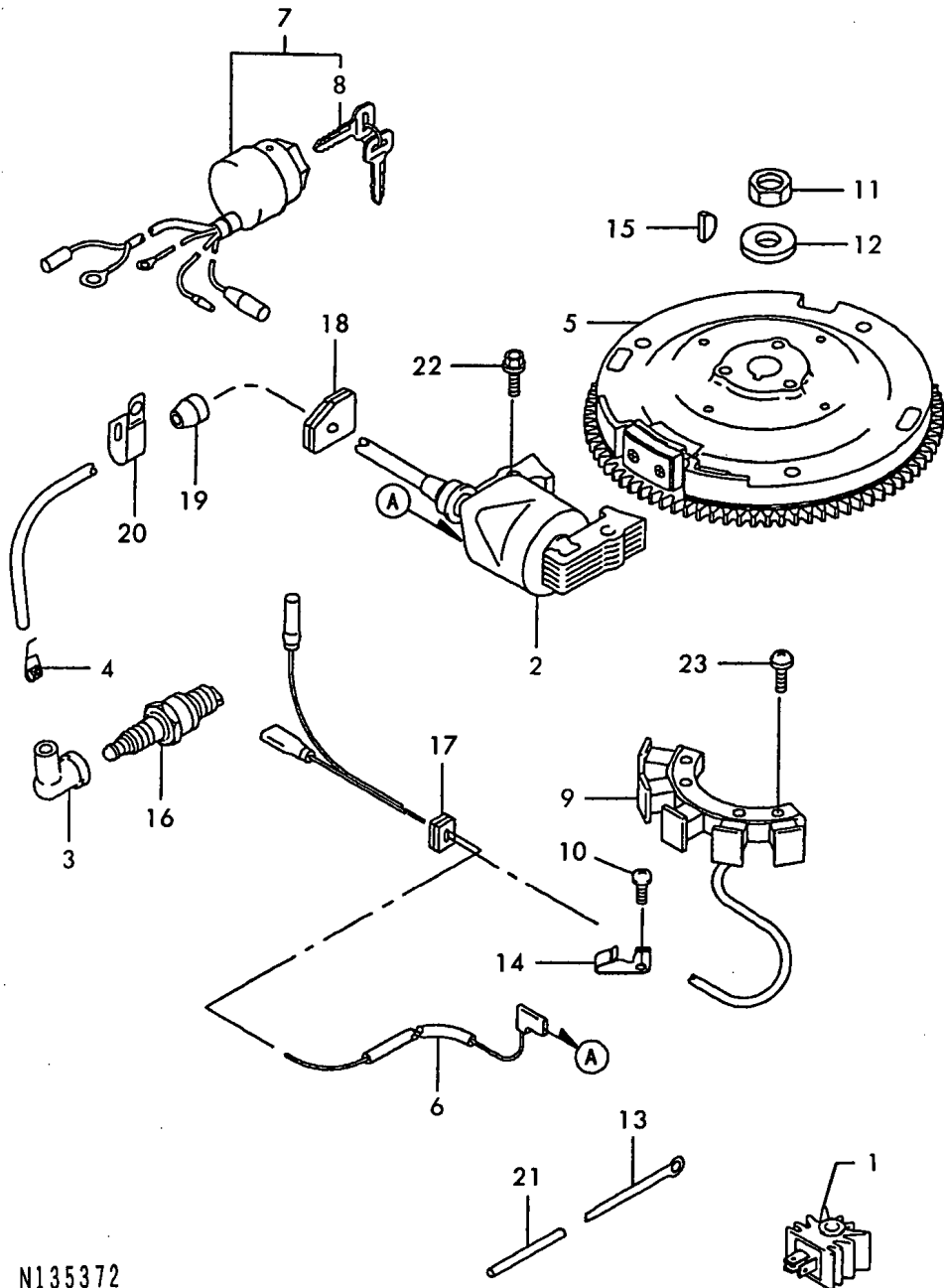
(E)=

(F)=

REF.	LEV.	PARTS NO.	DESCRIPTION	QTY						I	R
				(A)	(B)	(C)	(D)	(E)	(F)		
1	1	1Z1402-42294	COVER	1							
2	1	1Z1403-72104	SCREEN	1							
3	1	1Z4908-92231	SHROUD-ENGINE	1							
4	1	1Z4908-92232	SHROUD-ENGINE	1							
5	1	1Z4908-92233	SHROUD-ENGINE	1							
6	1	1Z5502-02099	GUARD	1							
7	1	1Z5904-12087	FAN	1							
8	1	1Z5906-62564	HOUSING-FAN	1							1
9	1	1Z9202-52003	SHIM T=1.20	1							
10	1	1Z9214-32179	COLLAR	4							
11	1	1Z9214-32182	COLLAR,6.2X7.8X5	3							
12	1	26106-060102	BOLT M 6X 10 PLATED	4							
13	1	1Z130G-06120	BOLT-FLANGED	12							
14	1	26106-060142	BOLT M 6X 14 PLATED	4							
15	1	1Z224B-04080	SCREW-PAN-WP-CROS	2							
16	1	1Z224B-06160	SCREW-PAN-WP-CROS	3							

Fig.6. ELECTRIC-EQUIPMENT

6. ELECTRICAL PARTS



(A)=FC420V-DG80

(B)=

(C)=

(D)=

(E)=

(F)=

REF.	LEV.	PARTS NO.	DESCRIPTION	Q'TY						I	R
				(A)	(B)	(C)	(D)	(E)	(F)		
1	1	1Z2106-61020	REGULATOR-VOLTAGE	1							
2	1	1Z2112-12086	COIL-IGNITION	1							
3	1	1Z2113-02066	CAP, PLUG	1							
4	1	1Z2116-92004	TERMINAL	1							
5	1	1Z2119-32154	FLYWHEEL-ASSY	1							
6	1	1Z2601-12331	WIRE-LEAD	1							
7	1	1Z2700-52056	SWITCH-ASSY-IGNITION	1							
8	2	1Z2700-82055	KEY-LOCK	2							
9	1	1Z5903-12086	COIL-CHARGING	1							
10	1	1Z9200-92308	SCREW	1							
11	1	1Z9201-52167	NUT	1							
12	1	1Z9202-22229	WASHER	1							
13	1	1Z9203-72063	CLAMP	1							
14	1	1Z9203-72177	CLAMP	1							
15	1	1Z9203-82094	KEY	1							
16	1	1Z9207-02075	PLUG-SPARK,RN11YC	1							
17	1	1Z9207-12099	GROMMET	1							
18	1	1Z9207-12112	GROMMET	1							
19	1	1Z9207-15170	GROMMET	1							
20	1	1Z9217-02081	CLAMP	1							
21	1	1Z9219-02167	TUBE	1							
22	1	1Z130B-05200	BOLT-FLANGED	2							
23	1	1Z224B-06200	SCREW-PAN-WP-CROS	2							

N135372

Fig.7. CONTROL-EQUIPMENT

(A)=FC420V-DG80

(B)=

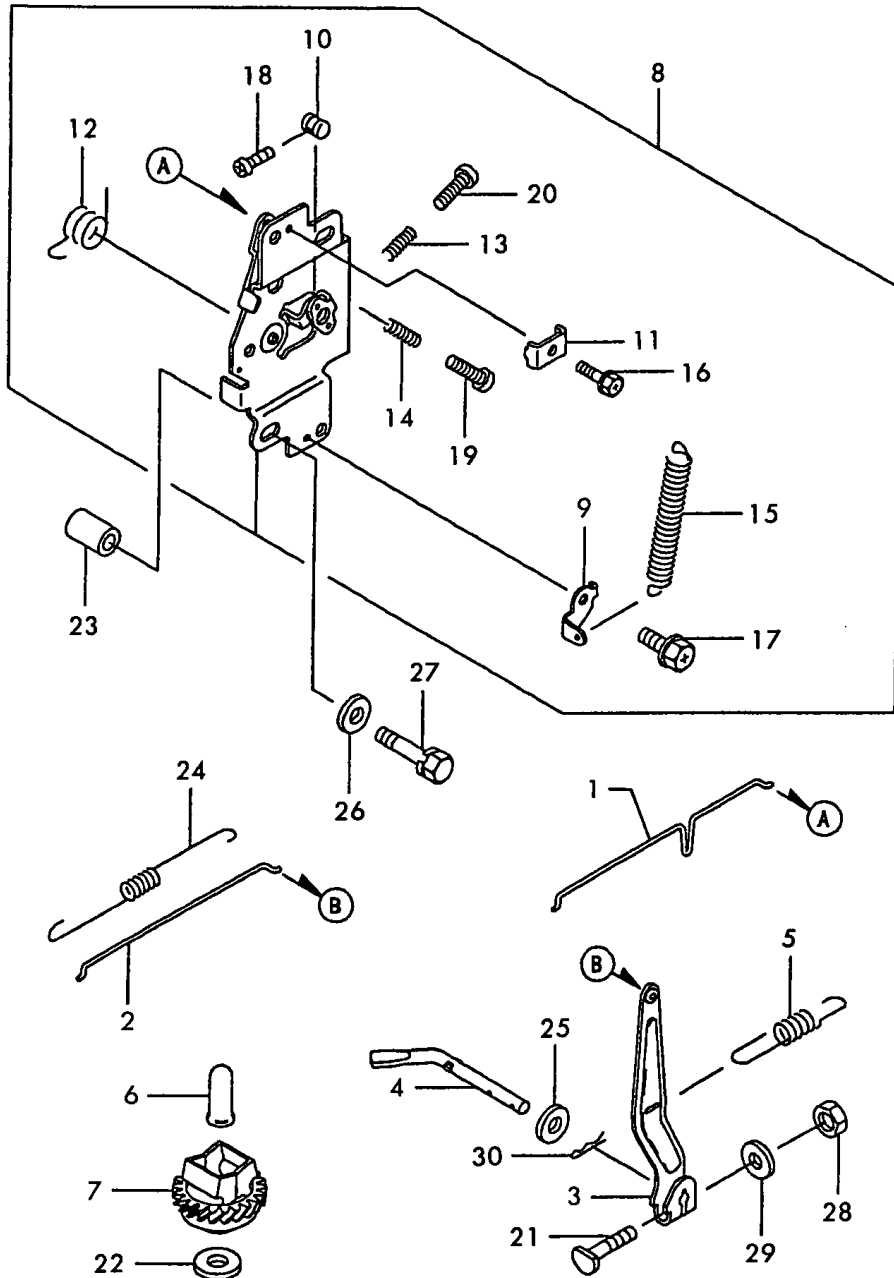
(C)=

(D)=

(E)=

(F)=

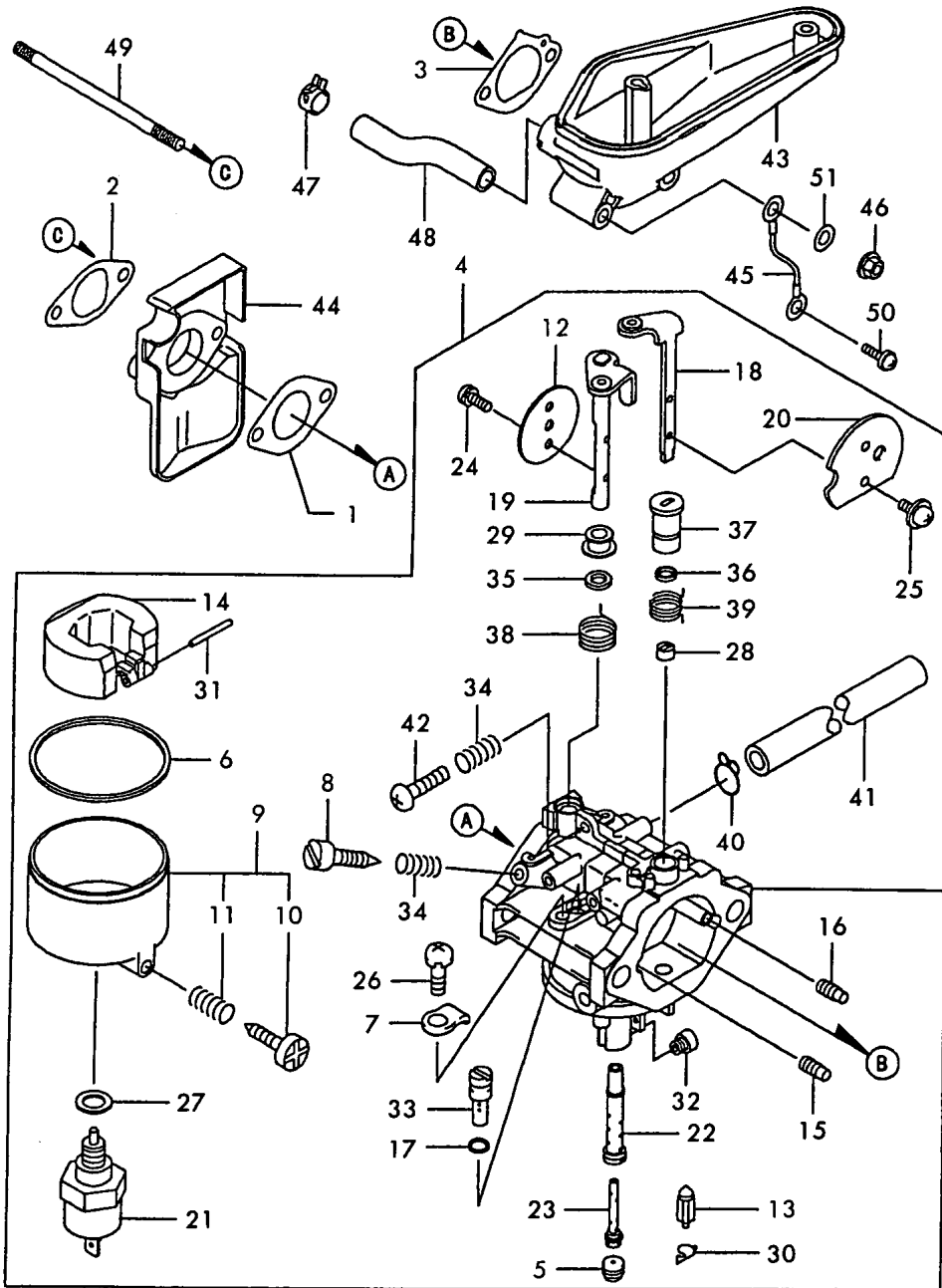
7. CONTROLLING DEVICE



REF.	LEV.	PARTS NO.	DESCRIPTION	QTY						I	R
				(A)	(B)	(C)	(D)	(E)	(F)		
1	1	1Z1616-92130	LINK-CHOKE	1							
2	1	1Z1617-12079	LINK,GOVERNOR	1							
3	1	1Z2118-72055	ARM-ASSY	1							
4	1	1Z3900-32073	ARM-PIVOT	1							
5	1	1Z3912-92011	SPRING-GOVERNOR	1							
6	1	1Z4203-62060	SLEEVE	1							
7	1	1Z4911-02084	GOVERNOR-ASSY	1							
8	1	1Z4911-32098	PANEL-COMP-CONTROL	1							
9	2	1Z1104-72028	BRACKET	1							
10	2	1Z9201-52120	NUT	1							
11	2	1Z9203-72020	CLAMP	1							
12	2	1Z9208-12316	SPRING	1							
13	2	1Z9214-42220	SPRING	1							
14	2	1Z9214-42266	SPRING	1							
15	2	1Z9214-42281	SPRING	1							
16	2	1Z9215-02182	BOLT,5X18	1							
17	2	1Z130B-05080	BOLT-FLANGED	1							
18	2	1Z214B-04120	SCREW-PAN+-	1							
19	2	1Z214B-04200	SCREW-PAN+-	1							
20	2	1Z9200-92113	SCREW	1							
21	1	1Z9200-22269	BOLT	1							
22	1	1Z9220-02036	WASHER	1							
23	1	1Z9214-32006	COLLAR	2							
24	1	1Z9214-42033	SPRING	1							
25	1	1Z9220-02029	WASHER 6	1							
26	1	1Z9220-02070	WASHER	2							
27	1	1Z0014-06350	BOLT 6X35 W/SP.WSHR.	2							
28	1	26756-060002	LOCK NUT 6	1							
29	1	22137-060000	WASHER 6, POLISHED	1							
30	1	22372-060000	SNAP PIN 6	1							

Fig.8. CARBURETOR

8. CARBURETOR



(A)=FC420V-DG80

(B)=

(C)=

(D)=

(E)=

(F)=

REF.	LEV.	PARTS NO.	DESCRIPTION	QTY						I	R
				(A)	(B)	(C)	(D)	(E)	(F)		
1	1	1Z1106-02339	GASKET,CARBURETOR	1							
2	1	1Z1106-02340	GASKET,INSULATOR	1							
3	1	1Z1106-02341	GASKET,INTAKE PIPE	1							
4	1	1Z1500-32329	CARBURETOR-ASSY	1							
5	2	1Z1100-32101	SEAT-VALVE	1							
6	2	1Z1100-92024	GASKET	1							
7	2	1Z1318-32252	PLATE	1							
8	2	1Z1601-42010	SCREW-PILOT AIR	1							
9	2	1Z1602-02109	CHAMBER-FLOAT	1							
10	3	1Z9200-92015	SCREW	1							
11	3	1Z9208-12009	SPRING	1							
12	2	1Z1602-52137	VALVE-THROTTLE,#90	1							
13	2	1Z1603-02067	VALVE-FLOAT	1							
14	2	1Z1603-12066	FLOAT	1							
15	2	1Z1603-52056	JET-AIR,#1.8	1							
16	2	1Z1603-52058	JET-AIR,#1.1	1							
17	2	1Z1603-80240	GASKET	1							
18	2	1Z1604-12163	SHAFT	1							
19	2	1Z1604-12215	SHAFT	1							
20	2	1Z1612-62170	VALVE,CHOKE	1							
21	2	1Z2118-82010	SOLENOID	1							
22	2	1Z4912-12188	NOZZLE-MAIN,89A	1							
23	2	1Z4912-32075	HOLDER-MAIN JET	1							
24	2	1Z9200-92080	SCREW	2							
25	2	1Z9200-92081	SCREW	2							
26	2	1Z9200-92244	SCREW	1							
27	2	1Z9202-22231	WASHER	1							
28	2	1Z9202-72003	COLLAR	1							
29	2	1Z9202-72025	COLLAR	1							
30	2	1Z9203-32067	RING-SNAP	1							
31	2	1Z9204-32006	PIN	1							
32	2	1Z9206-32257	JET-MAIN,#100	1							
33	2	1Z9206-42101	JET-PILOT,#60	1							
34	2	1Z9208-12009	SPRING	2							
35	2	1Z9209-32069	SEAL	1							
36	2	1Z9209-32082	SEAL	1							
37	2	1Z9214-32142	COLLAR	1							
38	2	1Z9214-42037	SPRING	1							
39	2	1Z9214-42160	SPRING	1							
40	2	1Z9217-02023	CLAMP	1							
41	2	1Z9219-02011	TUBE 4.5X6.5X100	1							
42	2	26557-040142	SCREW 4X14	1							
43	1	1Z1606-06001	PIPE-INTAKE	1							
44	1	1Z1607-36001	INSULATOR	1							
45	1	1Z2601-12233	WIRE-LEAD	1							
46	1	1Z9201-51193	NUT	2							
47	1	1Z9203-72012	CLAMP	1							
48	1	1Z9219-02066	TUBE 11.6X16X116	1							
49	1	1Z172G-61150	BOLT-STUD	2							
50	1	1Z224B-05080	SCREW-PAN-WP-CROS	1							
51	1	22117-060000	WASHER 6	1							

N:Old $\begin{matrix} \leftarrow \text{Yes} \\ \text{No} \end{matrix}$ New, Q:Old $\begin{matrix} \leftarrow \text{No} \\ \text{Yes} \end{matrix}$ New, R:Old $\begin{matrix} \leftarrow \text{Yes} \\ \text{No} \end{matrix}$ New, S:Old $\begin{matrix} \leftarrow \text{No} \\ \text{Yes} \end{matrix}$ New, W:Add, Z:Discontinued, F:Interchangeable by set, K:Q'ty Change

Fig.9. AIR-FILTER,MUFFLER

(A)=FC420V-DG80

(B)=

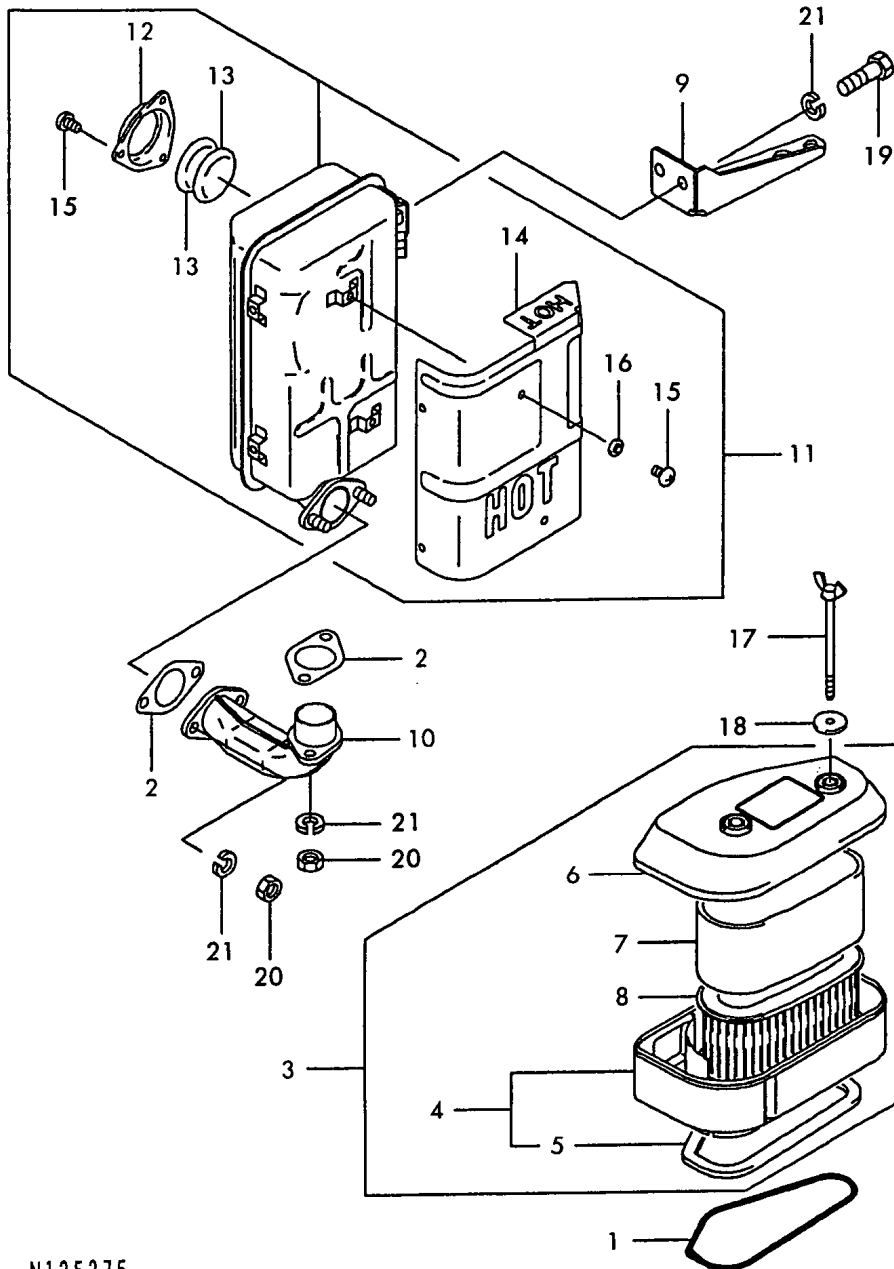
(C)=

(D)=

(E)=

(F)=

9. AIR FILTER & MUFFLER



REF.	LEV.	PARTS NO.	DESCRIPTION	QTY						I	R
				(A)	(B)	(C)	(D)	(E)	(F)		
1	1	1Z1100-92505	GASKET,AIR FILTER	1							
2	1	1Z1106-02382	GASKET,MUFFLER	2							
3	1	1Z1101-02421	FILTER-ASSY-AIR	1							
4	2	1Z1101-12227	CASE-AIR FILTER	1							
5	3	1Z1106-02446	GASKET	1							
6	2	1Z1101-22223	CAP,AIR FILTER	1							
7	2	1Z1101-32109	ELEMENT-AIR FILTER	1							
8	2	1Z1101-32141	ELEMENT-AIR FILTER	1							
9	1	1Z1104-62160	BRACKET	1							
10	1	1Z4906-22057	PIPE-COMP-EXHAUST	1							
11	1	1Z4906-92209	MUFFLER-ASSY	1							
12	2	1Z1101-22251	CAP,SPARK ARRESTER	1							
13	2	1Z1807-72052	ARRESTER-SPARK	2							
14	2	1Z4910-62471	COVER-MUFFLER	1							
15	2	1Z9200-92166	SCREW	9							
16	2	22137-050000	WASHER 5, POLISHED	6							
17	1	1Z9200-22274	BOLT	2							
18	1	1Z9202-22220	WASHER	2							
19	1	26206-080162	BOLT M8X16	2							
20	1	26716-080002	NUT M 8	4							
21	1	22217-080000	SPRING WASHER 8	6							

N135375

Fig.10. FUEL-TANK,FUEL-VALVE

(A)=FC420V-DG80

(B)=

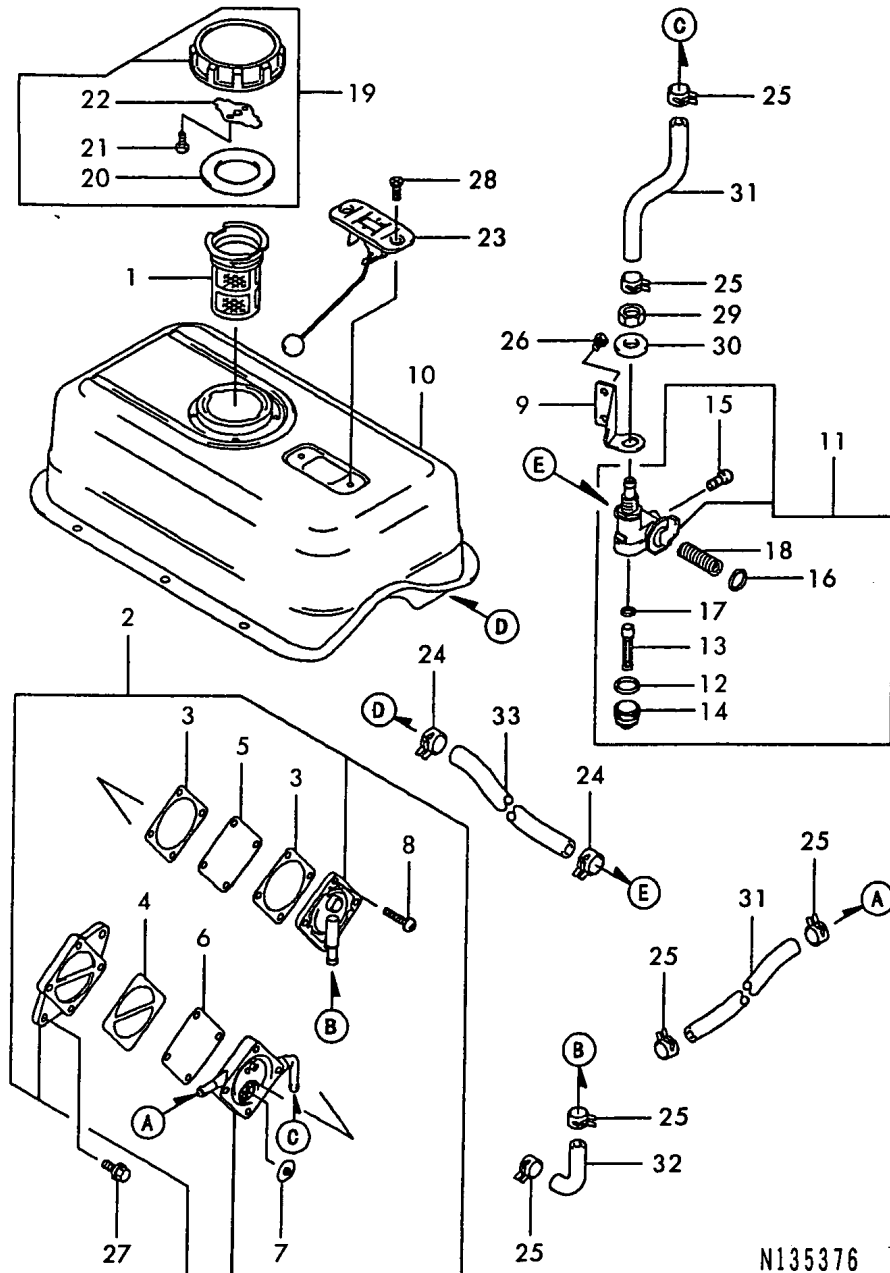
(C)=

(D)=

(E)=

(F)=

10. FUEL TANK & FUEL VALVE



N135376

REF.	LEV.	PARTS NO.	DESCRIPTION	QTY						I	R
				(A)	(B)	(C)	(D)	(E)	(F)		
1	1	1Z4901-92107	FILTER-FUEL	1							
2	1	1Z4904-02066	PUMP-FUEL	1							
3	2	1Z1100-92763	GASKET,FUEL PUMP	2							
4	2	1Z1100-92764	GASKET,FUEL PUMP	1							
5	2	1Z4302-82068	DIAPHRAGM	1							
6	2	1Z4302-82069	DIAPHRAGM	1							
7	2	1Z4911-62055	VALVE-ASSY	2							
8	2	1Z9200-92212	SCREW	4							
9	1	1Z4910-52096	BRACKET-TAP	1							
10	1	1Z5100-12258	TANK-COMP-FUEL	1							
11	1	1Z5102-32163	TAP-ASSY	1							
12	2	1Z1100-92526	GASKET	1							
13	2	1Z1404-32070	FILTER	1							
14	2	1Z5103-62073	CUP,FUEL TAP	1							
15	2	1Z9200-92004	SCREW	1							
16	2	1Z9205-51299	RING-O	1							
17	2	1Z9205-52083	RING-O	1							
18	2	1Z9214-42043	SPRING	1							
19	1	1Z5104-82052	CAP-ASSY-TANK	1							
20	2	1Z1100-92115	GASKET	1							
21	2	1Z9200-92021	SCREW	2							
22	2	1Z9208-12036	SPRING	1							
23	1	1Z5200-52100	GAUGE	1							
24	1	1Z9217-02087	CLAMP	2							
25	1	1Z9217-02088	CLAMP	6							
26	1	1Z130B-05080	BOLT-FLANGED	2							
27	1	26106-060142	BOLT M 6X 14 PLATED	2							
28	1	1Z221C-05120	SCREW-CSK-CROS	2							
29	1	26737-120002	NUT M12	1							
30	1	1Z410B-12000	WASHER 12	1							
31	1	1Z0070-61000	TUBE,BRAIDED	2							
32	1	1Z0070-61000	TUBE,BRAIDED	1							
33	1	1Z0070-81000	TUBE-BRAID	1							

Fig.11. STARTER

11. STARTER

(A)=FC420V-DG80

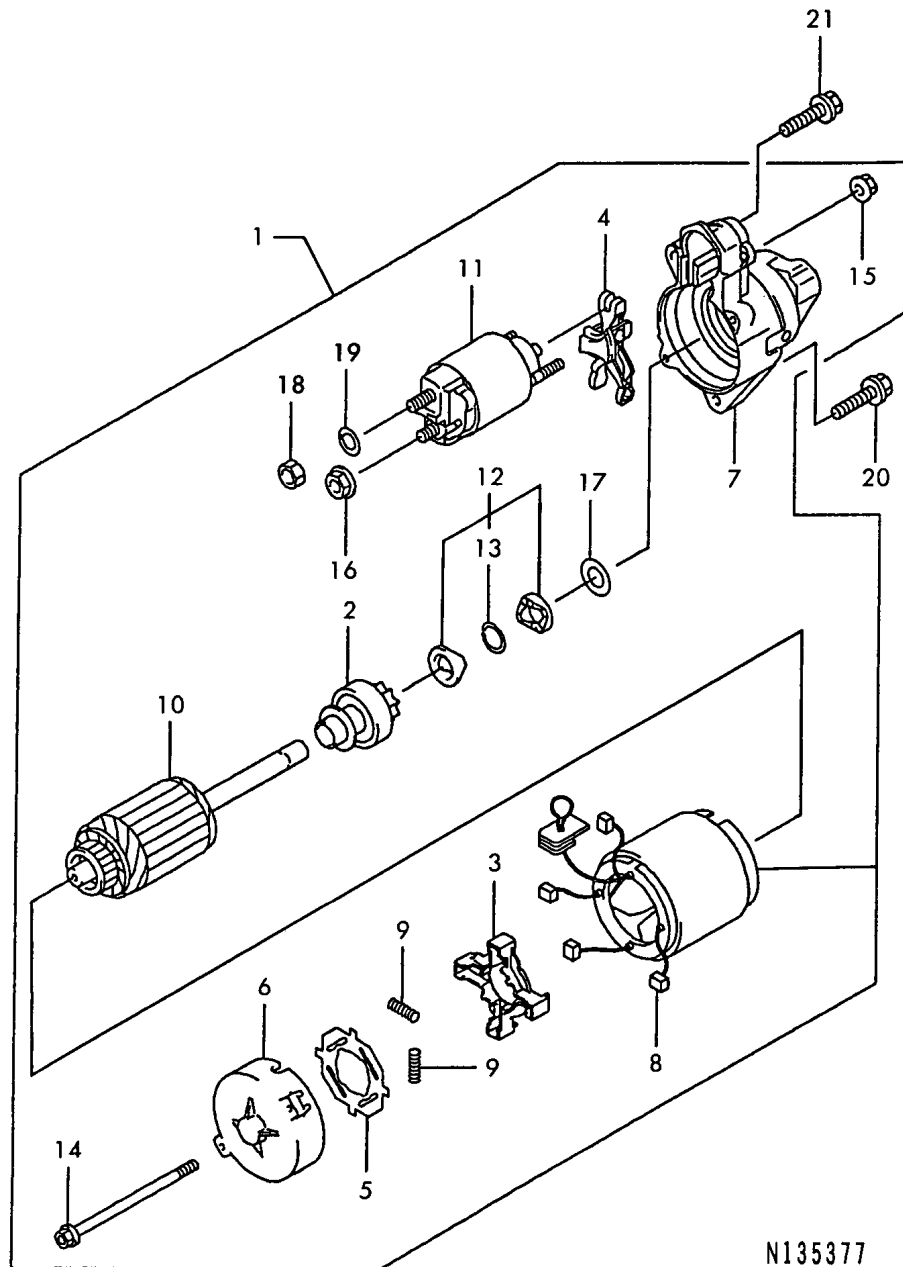
(B)=

(C)=

(D)=

(E)=

(F)=

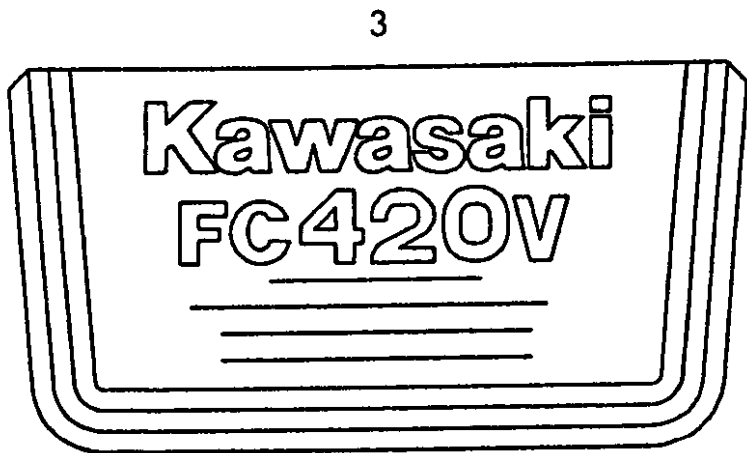
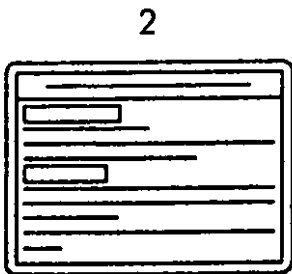


N135377

REF.	LEV.	PARTS NO.	DESCRIPTION	QTY						I	R
				(A)	(B)	(C)	(D)	(E)	(F)		
1	1	1Z2116-32073	STARTER-ELECTRIC	1							
2	2	1Z1308-12085	CLUTCH-ASSY	1							
3	2	1Z1309-12068	HOLDER,BRUSH	1							
4	2	1Z1316-82131	LEVER,SHIFT	1							
5	2	1Z1607-32098	INSULATOR	1							
6	2	1Z1614-62077	COVER-ASSY	1							
7	2	1Z1614-62106	COVER-ASSY	1							
8	2	1Z2103-92059	BRUSH	4							
9	2	1Z2104-02052	SPRING,BRUSH	4							
10	2	1Z2108-02054	ARMATURE	1							
11	2	1Z2701-02122	SWITCH COMPL.	1							
12	2	1Z3208-52097	STOPPER	1							
13	3	1Z9203-32081	RING,SNAP	1							
14	2	1Z9200-22277	BOLT	2							
15	2	1Z9201-52146	NUT	2							
16	2	1Z9201-52147	NUT	1							
17	2	1Z9202-22218	WASHER	1							
18	2	26706-080002	NUT M 8	2							
19	2	22217-080000	SPRING WASHER 8	2							
20	1	26106-080352	BOLT M 8X 35 PLATED	1							
21	1	26107-080402	BOLT M 8X 40	1							

Fig.12. LABEL

12. LABEL



(A)=FC420V-DG80

(B)=

(C)=

(D)=

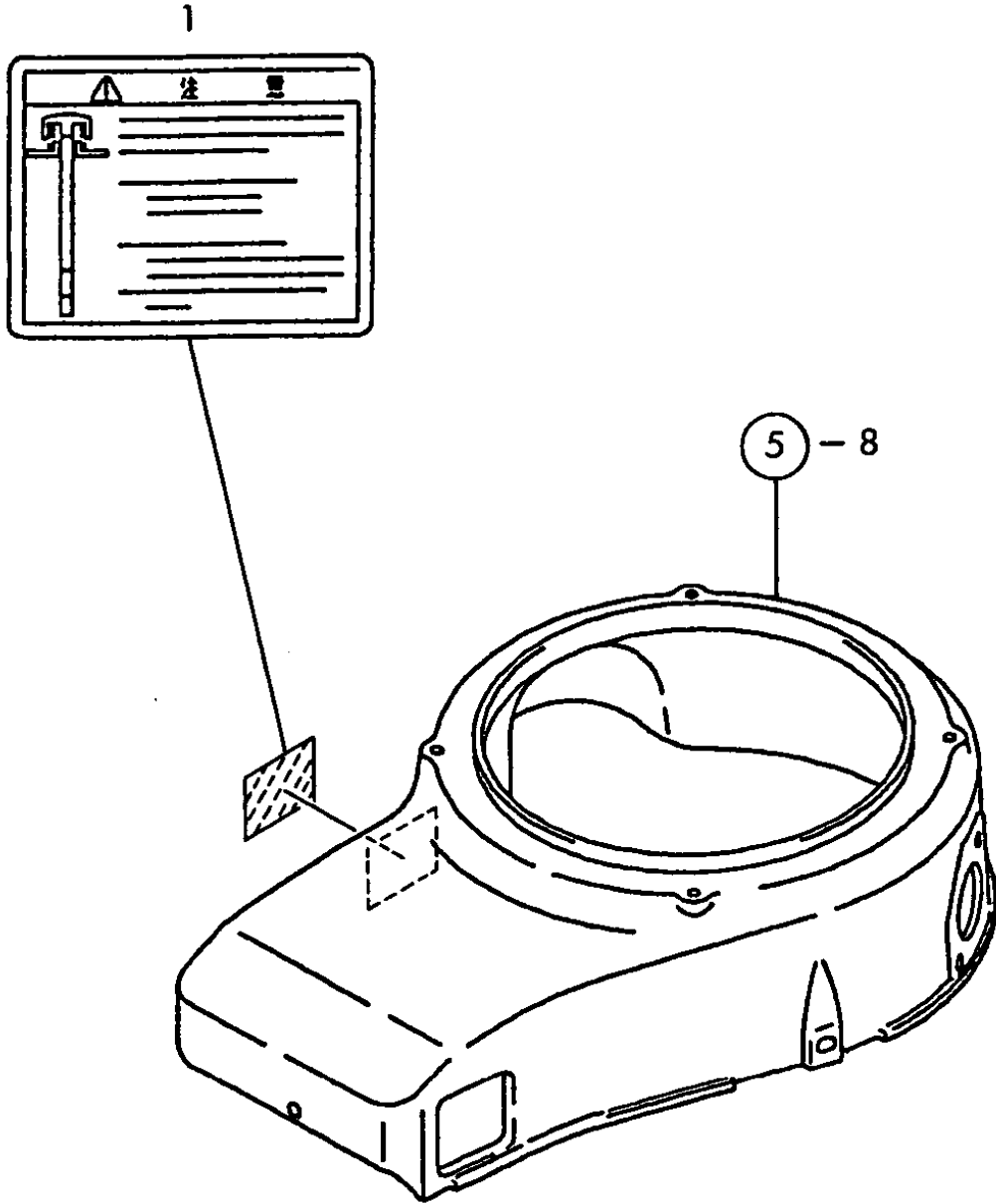
(E)=

(F)=

REF.	LEV.	PARTS NO.	DESCRIPTION	Q'TY						I	R
				(A)	(B)	(C)	(D)	(E)	(F)		
1	1	1Z5603-02390	LABEL,THROTTLE	1							
2	1	1Z5603-12441	LABEL-MANUAL	1							
3	1	1Z5603-82504	LABEL-BRAND	1							

Fig.13. LABEL(SAFETY)

13. LABEL(SAFETY)



(A)=FC420V-DG80

(B)=

(C)=

(D)=

(E)=

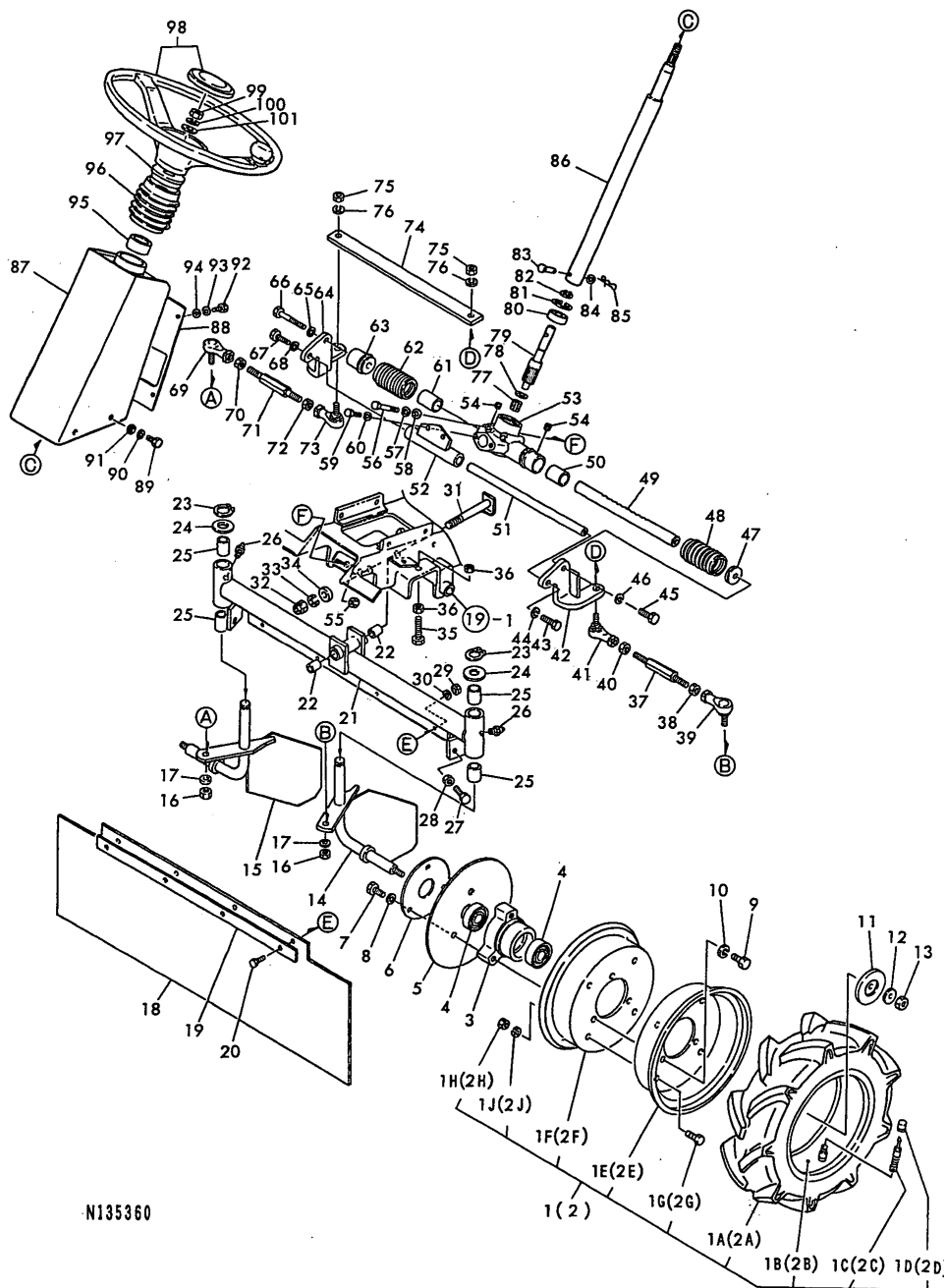
(F)=

REF.	LEV.	PARTS NO.	DESCRIPTION	Q'TY						I	R	
				(A)	(B)	(C)	(D)	(E)	(F)			
1	1	1Z5603-12442	LABEL-MANUAL	1								

N:Old $\begin{matrix} \leftarrow \text{Yes} \\ \text{No} \rightarrow \end{matrix}$ New, Q:Old $\begin{matrix} \leftarrow \text{No} \\ \text{Yes} \rightarrow \end{matrix}$ New, R:Old $\begin{matrix} \leftarrow \text{Yes} \\ \text{No} \rightarrow \end{matrix}$ New, S:Old $\begin{matrix} \leftarrow \text{No} \\ \text{Yes} \rightarrow \end{matrix}$ New, W:Add, Z:Discontinued, F:Interchangeable by set, K:Q'ty Change
 (C)Copy Rights YANMAR CO.,LTD.

Fig.14. FRONT WHEEL,STEERING

14. FRONT WHEEL,STEERING



(A)=YRM831VH
(B)=
(C)=

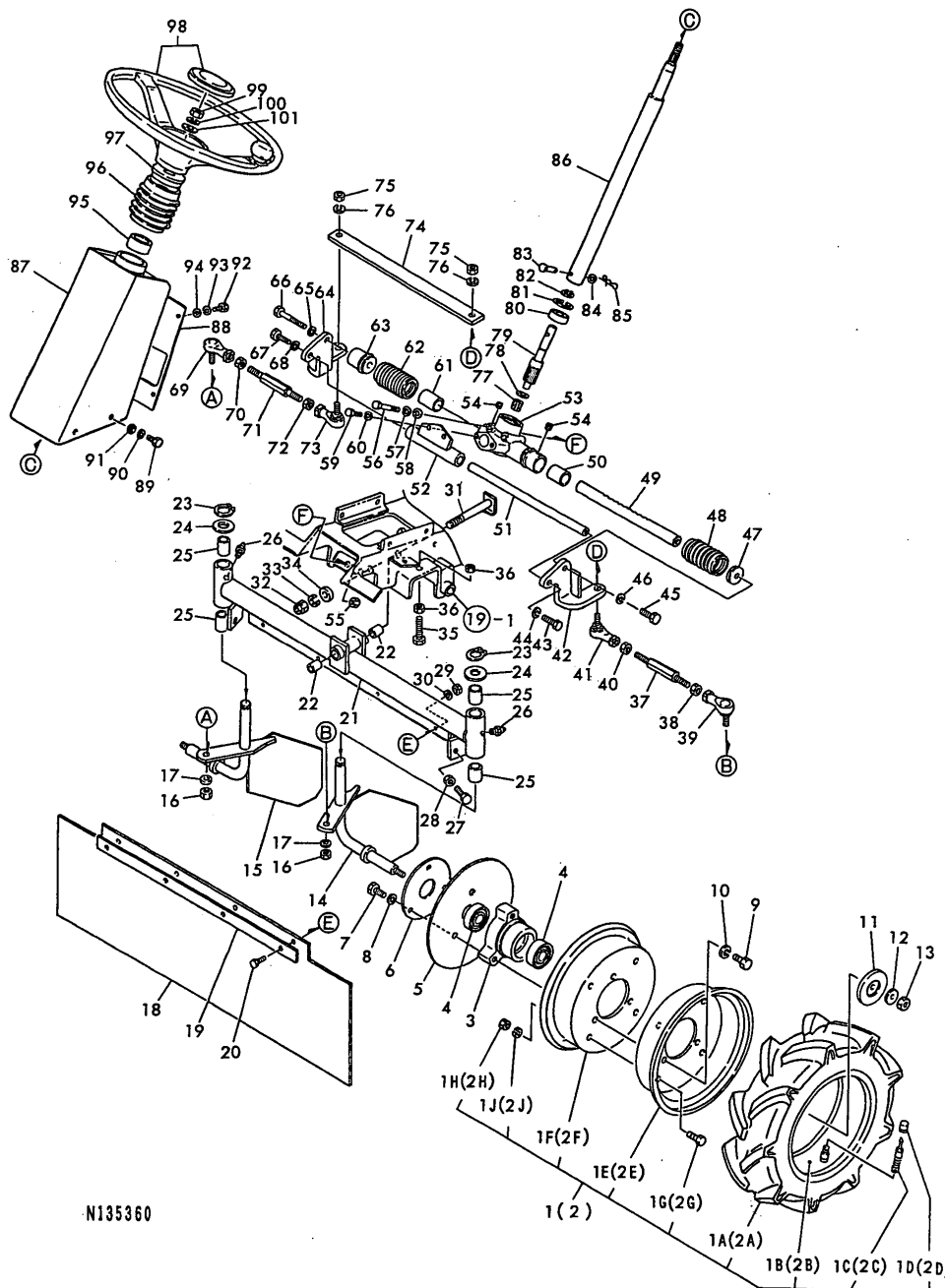
(D)=
(E)=
(F)=

REF.	LEV.	PARTS NO.	DESCRIPTION	QTY						I	R
				(A)	(B)	(C)	(D)	(E)	(F)		
1	1	G41200260200	TIRE L ASSY	1							
1A	2	G41200260101	TIRE	1							
1B	2	G41200260102	TUBE	1							
1C	2	G41200260103	VALVE	1							
1D	2	G41200260104	CAP,VALVE	1							
1E	2	G41200260105	WHEEL A	1							
1F	2	G41200260106	WHEEL B	1							
1G	2	G40010100816	BOLT M6*16	4							
1H	2	G40020100008	NUT M8	4							
1J	2	G40027100008	WASHER M8	4							
2	1	G41200260100	TIRE R ASSY.	1							
2A	2	G41200260101	TIRE	1							
2B	2	G41200260102	TUBE	1							
2C	2	G41200260103	VALVE	1							
2D	2	G41200260104	CAP,VALVE	1							
2E	2	G41200260105	WHEEL A	1							
2F	2	G41200260106	WHEEL B	1							
2G	2	G40010100816	BOLT M6*16	4							
2H	2	G40020100008	NUT M8	4							
2J	2	G40027100008	WASHER M8	4							
3	1	G41200220000	HUB,FRONT WHEEL	2							
4	1	G4040146204A	BALL BEARING 6204	4							
5	1	G41220260200	RUBBER,FRONT WHEEL	2							
6	1	G41200220100	PLATE,FRONT WHEEL	2							
7	1	G40010100816	BOLT M6*16	6							
8	1	G40027100008	WASHER M8	6							
9	1	G40010100820	BOLT M8*20	6							
10	1	G40027100008	WASHER M8	6							
11	1	G47292461010	CAP	2							
12	1	G47082200000	WASHER 30*11*3.2	2							
13	1	G40022400010	U-NUT M10	2							
14	1	G41220221000	KNUCKLE L,FRANCE	1							
15	1	G41220220900	KNUCKLE R,FRANCE	1							
16	1	G40020100010	NUT M10	2							
17	1	G40027100010	WASHER M10	2							
18	1	G41220260400	DRAPE,FRONT RUBBER	1							
19	1	G47862320000	PLATE,RUBBER DRAPE	1							
20	1	G40010100820	BOLT M8*20	4							
21	1	G41220220100	AXLE,FRONT WHEEL	1							
22	1	G400MB1620DU	DU BUSH	2							
23	1	G40036100020	RETAINING RING S20	2							
24	1	G40026100020	PLAIN WASHER M20	2							
25	1	G400MB2025DU	BUSH,DU	4							
26	1	G40060670000	NIPPLE M6,GREASE	2							
27	1	G40100000016	BOLT M8*30	2							
28	1	G40020100008	NUT M8	2							
29	1	G40020100008	NUT M8	4							
30	1	G40027100008	WASHER M8	4							
31	1	G41220220300	PIN(CENTER)	1							
32	1	G40022400012	U-NUT M12	1							
33	1	G40027100012	WASHER M12	1							

N:Old $\frac{Yes}{No}$ New, Q:Old $\frac{No}{Yes}$ New, R:Old $\frac{Yes}{Yes}$ New, S:Old $\frac{No}{No}$ New, W:Add, Z:Discontinued, F:Interchangeable by set, K:Q'ty Change
++ CONTINUE ++

Fig.14. FRONT WHEEL,STEERING

14. FRONT WHEEL,STEERING



N135360

(A)=YRM831VH
(B)=
(C)=

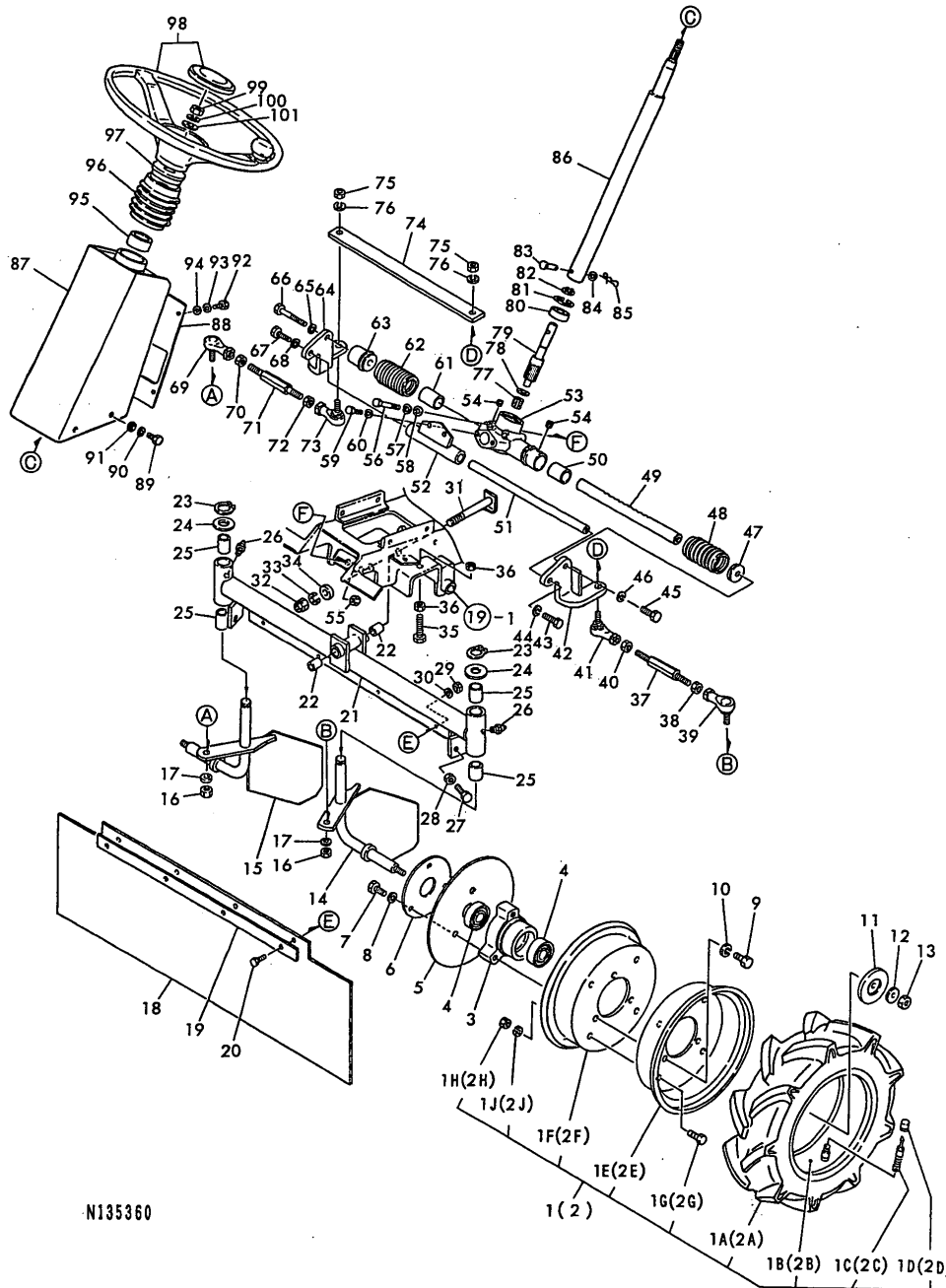
(D)=
(E)=
(F)=

REF.	LEV.	PARTS NO.	DESCRIPTION	QTY						I	R
				(A)	(B)	(C)	(D)	(E)	(F)		
34	1	G40026100012	WASHER M12	1							
35	1	G40010101035	BOLT M10X35	2							
36	1	G40020100010	NUT M10	4							
37	1	G41206120600	TIEROD	1							
38	1	G40020100010	NUT M10	1							
39	1	G47076410000	BALL, LINK	1							
40	1	G40200000062	NUT M10,R HAND SCREW	1							
41	1	G47256410010	BALL, LINK	1							
42	1	G41306120300	ARM L,STEERING	1							
43	1	G40010210830	BOLT M8XP1.0X30(8T)	1							
44	1	G40027100008	WASHER M8	1							
45	1	G40010110830	BOLT M8X30	1							
46	1	G40027100008	WASHER M8	1							
47	1	G44452041000	COLLAR,BOOT	1							
48	1	G47256540010	BOOT	1							
49	1	G47366621030	RUCK GEAR	1							
50	1	G47366621040	BUSH	1							
51	1	G41206120500	RELAY ROD	1							
52	1	G41206120400	GUIDE(RELAY ROD	1							
53	1	G41207020100	GEAR BOX	1							
54	1	G40160000506	SCREW M5X6,SET	2							
55	1	G40020100008	NUT M8	2							
56	1	G40101050870	BOLT M8X70(11T	2							
57	1	G40027100008	WASHER M8	2							
58	1	G40026100008	WASHER M8	2							
59	1	G40010110620	BOLT M6X20	2							
60	1	G40027100006	WASHER M6	2							
61	1	G47366621040	BUSH	1							
62	1	G47256540010	BOOT	1							
63	1	G41206121000	COLLAR,RH BOOT	1							
64	1	G41306120200	ARM R,STEERING	1							
65	1	G40027100008	WASHER M8	1							
66	1	G40010100860	BOLT M8*60	1							
67	1	G40010210830	BOLT M8XP1.0X30(8T	1							
68	1	G40027100008	WASHER M8	1							
69	1	G47076410000	BALL, LINK	1							
70	1	G40020100010	NUT M10	1							
71	1	G41206120600	TIEROD	1							
72	1	G40200000062	NUT M10,R HAND SCREW	1							
73	1	G47256410010	BALL, LINK	1							
74	1	G41206121200	STAY,ARM STEERING	1							
75	1	G40020100010	NUT M10	2							
76	1	G40027100010	WASHER M10	2							
77	1	G40430010120	NEEDLEBEARING(BK1012	1							
78	1	G47366621080	WASHER	1							
79	1	G41207020200	PINION	1							
80	1	G4040146202A	BALL BEARING 6202	1							
81	1	G40036500035	RING STOP R35	1							
82	1	G40036100015	RING STOP S15	1							
83	1	G41206160300	PIN 6X33,STRNG.SHAFT	1							
84	1	G40026100006	WASHER M6	1							

N:Old $\frac{Yes}{No}$ New, Q:Old $\frac{No}{Yes}$ New, R:Old $\frac{Yes}{Yes}$ New, S:Old $\frac{No}{No}$ New, W:Add, Z:Discontinued, F:Interchangeable by set, K:Q'ty Change
 ++ CONTINUE ++

Fig.14. FRONT WHEEL,STEERING

14. FRONT WHEEL,STEERING



(A)=YRM831VH

(B)=

(C)=

(D)=

(E)=

(F)=

REF.	LEV.	PARTS NO.	DESCRIPTION	QTY						I	R
				(A)	(B)	(C)	(D)	(E)	(F)		
85	1	G40031199006	PIN 6,STPRD.STRAIGHT	1							
86	1	G41226120100	SHAFT,STEERING	1							
87	1	G41226120200	COLUMN,STEERING	1							
88	1	G41222220600	PLATE,KEY SWITCH	1							
89	1	G40010100816	BOLT M6*16	4							
90	1	G40027100008	WASHER M8	4							
91	1	G40026100008	WASHER M8	4							
92	1	G40010100612	BOLT M6*12	4							
93	1	G40027100006	WASHER M6	4							
94	1	G40026100006	WASHER M6	4							
95	1	G41206160000	BUSH,COLUMN	1							
96	1	G41206160100	BOOT	1							
97	1	G41306160100	COLLAR,BELLOWS	1							
98	1	G41206160200	STEERING WHEEL	1							
99	1	G40020200014	NUT M14XP1.5	1							
100	1	G40027100014	SPRING WASHER M14	1							
101	1	G40026100014	PLAIN WASHER M14	1							

N135360

Fig.15. ROTARY

(A)=YRM831VH

(B)=

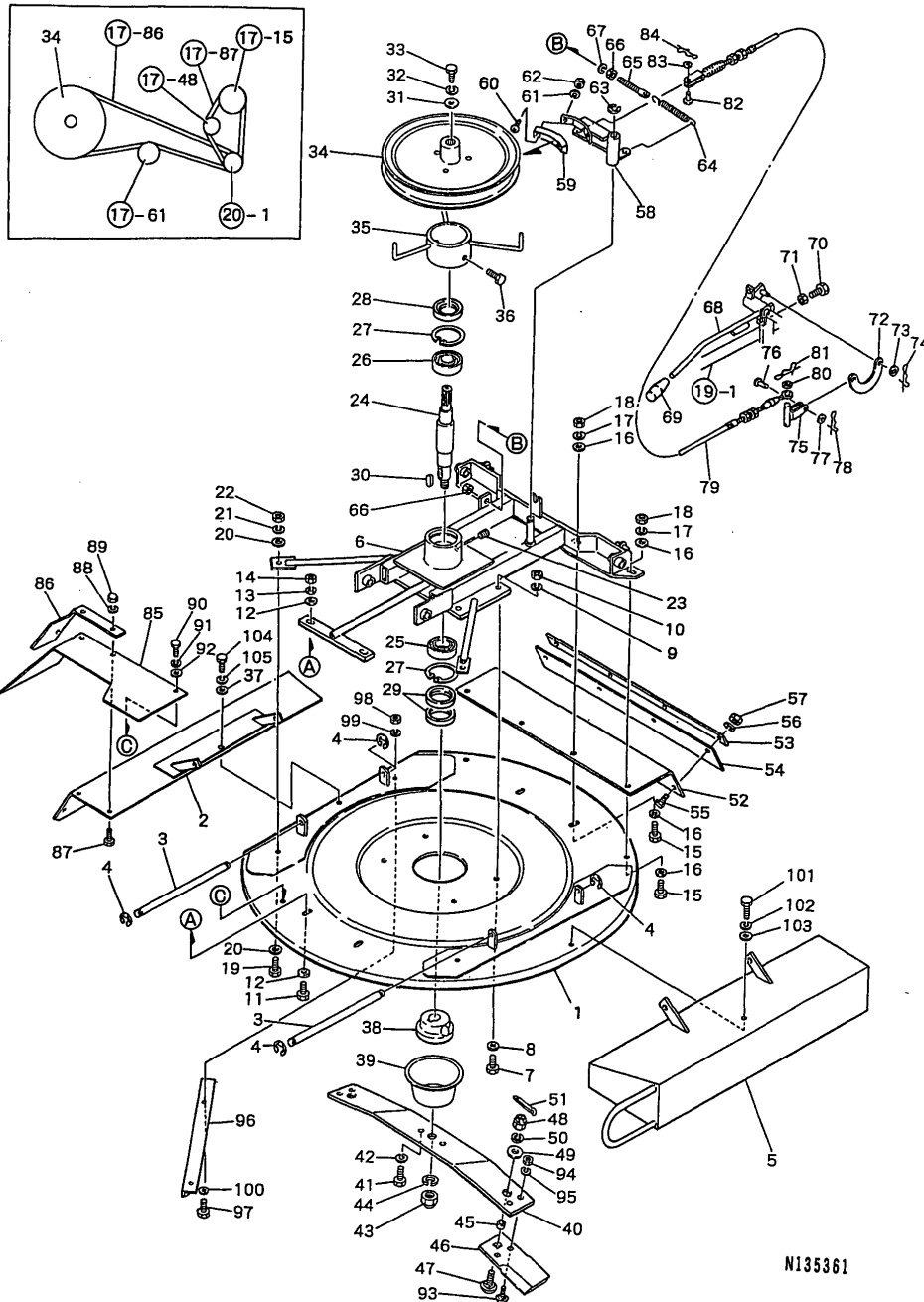
(C)=

(D)=

(E)=

(F)=

15. ROTARY



REF.	LEV.	PARTS NO.	DESCRIPTION	QTY						I	R
				(A)	(B)	(C)	(D)	(E)	(F)		
1	1	G41225321100	COVER.	1							
2	1	G41225351200	COVER PL ASSY(ROTARY	1							
3	1	G41205320200	PIN,DISCHARGE COVER	2							
4	1	G40036800006	RING,STOP E6	4							
5	1	G41225351300	PL.ASSY.,COVER L	1							
6	1	G41215320300	SUPPORT,ROTARY COVER	1							
7	1	G40010100825	BOLT M8X25	4							
8	1	G40026100008	WASHER M8	4							
9	1	G40027100008	WASHER M8	4							
10	1	G40020100008	NUT M8	4							
11	1	G40010100820	BOLT M8*20	2							
12	1	G40026100008	WASHER M8	4							
13	1	G40027100008	WASHER M8	2							
14	1	G40020100008	NUT M8	2							
15	1	G40010100825	BOLT M8X25	4							
16	1	G40026100008	WASHER M8	8							
17	1	G40027100008	WASHER M8	4							
18	1	G40020100008	NUT M8	4							
19	1	G40010100825	BOLT M8X25	2							
20	1	G40026100008	WASHER M8	4							
21	1	G40027100008	WASHER M8	2							
22	1	G40020100008	NUT M8	2							
23	1	G40064500100	PLUG,HEX.SCKT.THREAD	1							
24	1	G41205320400	SHAFT,ROTARY	1							
25	1	G4040106007A	BALL BEARING 6007	1							
26	1	G4040146206A	BALL BEARING 6206	1							
27	1	G40036500062	RETAINING RING R62	2							
28	1	G40600030627	SEAL,OIL	1							
29	1	G40600356210	SEAL,OIL	2							
30	1	G40300000002	KEY 7X7X25	1							
31	1	G46030201000	WASHER 38X11X3.2	1							
32	1	G40027100010	WASHER M10	1							
33	1	G40010101025	BOLT M10*25	1							
34	1	G41225321500	PULLEY ROTARY	1							
35	1	G41225321600	STOPPER,ROTARY BELT	1							
36	1	G40010100816	BOLT M6*16	2							
37	1	G40026100008	WASHER M8	1							
38	1	G41225320900	BOSS,REAPING EDGE	1							
39	1	G47002320010	PLATE,TWINE PROTECT.	1							
40	1	G41225361100	ARM,REAPING EDGE MTG	1							
41	1	G40010111025	BOLT M10X25	2							
42	1	G40027100010	WASHER M10	2							
43	1	G40020210016	NUT M16XP1.5	1							
44	1	G40027100016	SPRING WASHER M16	1							
45	1	G47392040000	COLLAR,FR.EDGE FLCRM	2							
46	1	G41225362000	EDGE CE,FREE READING	2							
47	1	G41305360300	BOLT,FREE EDGE MTG.	2							
48	1	G41305360500	NUT M12,CASTLE	2							
49	1	G46002202000	WASHER 34X13X3.2	2							
50	1	G40027100012	WASHER M12	2							
51	1	G4030103225S	COTTOR PIN 3.2X25	2							

N:Old $\begin{matrix} \text{Yes} \\ \text{No} \end{matrix}$ New, Q:Old $\begin{matrix} \text{No} \\ \text{Yes} \end{matrix}$ New, R:Old $\begin{matrix} \text{Yes} \\ \text{No} \end{matrix}$ New, S:Old $\begin{matrix} \text{No} \\ \text{Yes} \end{matrix}$ New, W:Add, Z:Discontinued, F:Interchangeable by set, K:Q'ty Change

++ CONTINUE ++

(C)Copy Rights YANMAR CO.,LTD.

N135361

Fig.15. ROTARY

(A)=YRM831VH

(B)=

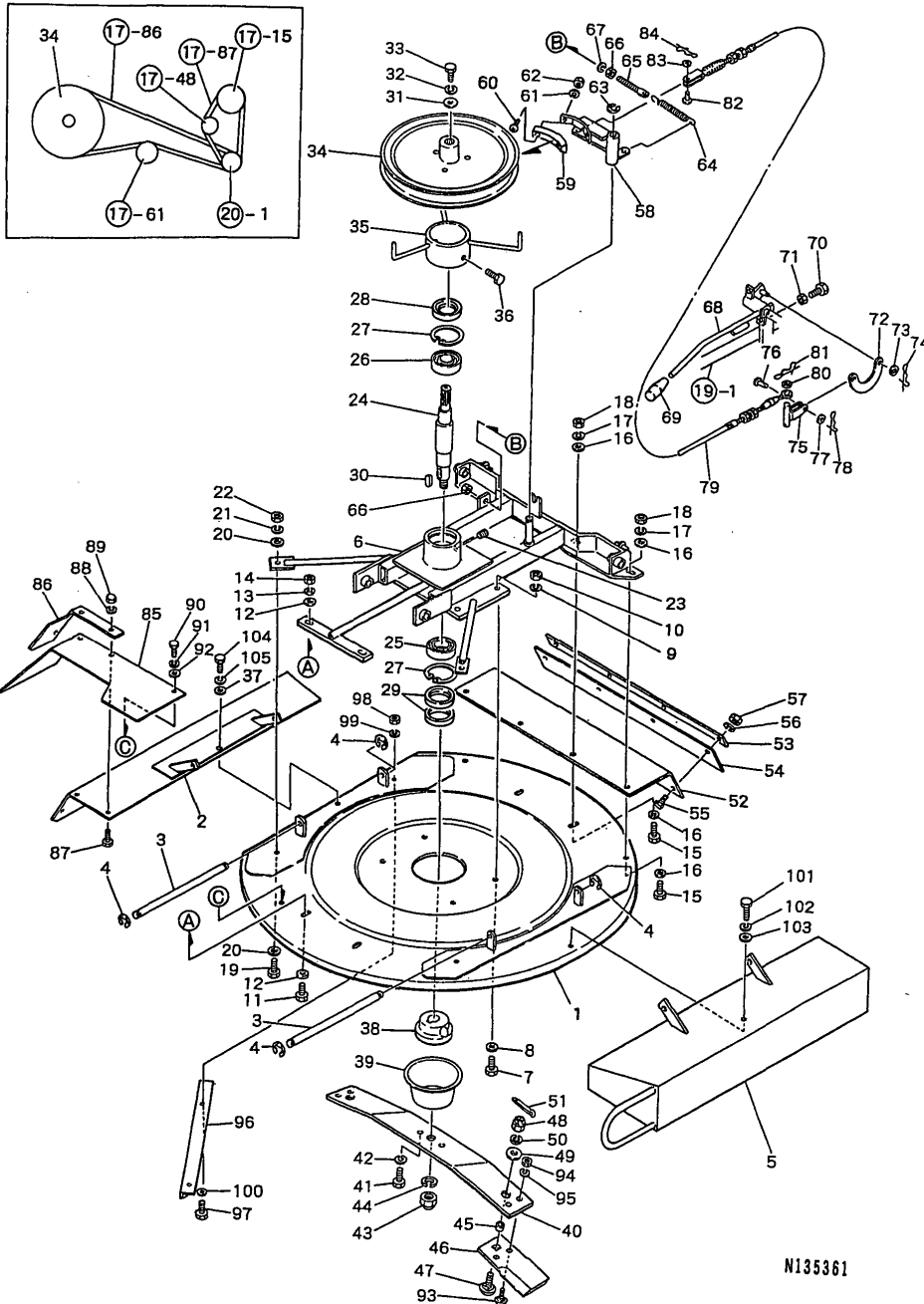
(C)=

(D)=

(E)=

(F)=

15. ROTARY

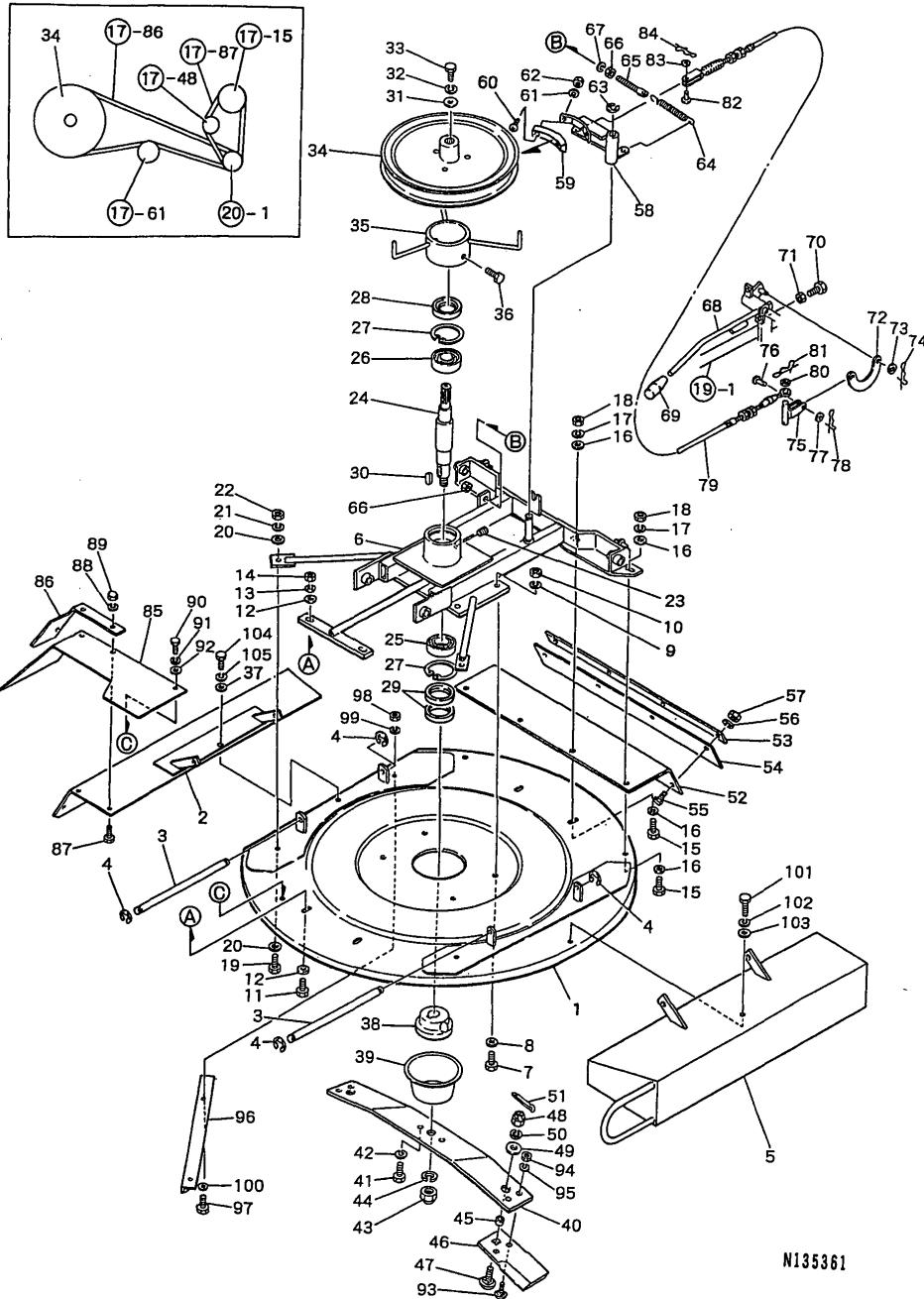


N135361

REF.	LEV.	PARTS NO.	DESCRIPTION	QTY						I	R
				(A)	(B)	(C)	(D)	(E)	(F)		
52	1	G41225320200	STAY,REAR RUBR.DRAPE	1							
53	1	G41205320900	PLATE,REAR RBR.DRAPE	1							
54	1	G41225360300	DRAPE,REAR RUBBER	1							
55	1	G40010100820	BOLT M8*20	4							
56	1	G40027100008	WASHER M8	4							
57	1	G40020100008	NUT M8	4							
58	1	G41225321700	ARM,ROTARY BRAKE	1							
59	1	G41205360100	SHOE,BRAKE	1							
60	1	G40015100315	SCREW M3X15,CRH.PAN	2							
61	1	G40027100003	SPRING WASHER M3	2							
62	1	G40020100003	NUT M3	2							
63	1	G40036800012	RING,STOP E12	1							
64	1	G47252110000	SPRING	1							
65	1	G47252221000	PLATE	1							
66	1	G40020100008	NUT M8	2							
67	1	G40027100008	WASHER M8	1							
68	1	G41225320600	LEVER,ROTARY	1							
69	1	G46066030020	GRIP 9.5	1							
70	1	G40010100820	BOLT M8*20	1							
71	1	G40020100008	NUT M8	1							
72	1	G42737220010	ROD	1							
73	1	G40026100006	WASHER M6	1							
74	1	G40031199006	PIN 6,STPRD.STRAIGHT	1							
75	1	G41205321400	ROD,ROTARY WIRE	1							
76	1	G46066080000	PIN,6*19	1							
77	1	G40026100006	WASHER M6	1							
78	1	G40031199006	PIN 6,STPRD.STRAIGHT	1							
79	1	G41205360300	WIRE,BRAKE	1							
80	1	G40026100006	WASHER M6	1							
81	1	G40031199006	PIN 6,STPRD.STRAIGHT	1							
82	1	G46066080000	PIN,6*19	1							
83	1	G40026100006	WASHER M6	1							
84	1	G40031199006	PIN 6,STPRD.STRAIGHT	1							
85	1	G41225362100	RUBBER(COVER,ROTARY	1							
86	1	G41225321400	PLATE(RUBBER	1							
87	1	G40010100820	BOLT M8*20	3							
88	1	G40027100008	WASHER M8	3							
89	1	G40024500008	NUT M8,CAP	3							
90	1	G40010100820	BOLT M8*20	1							
91	1	G40027100008	WASHER M8	1							
92	1	G40026100008	WASHER M8	1							
93	1	G47396070000	BOLT,CUP SQUARE NECK	4							
94	1	G40020100010	NUT M10	4							
95	1	G40027100010	WASHER M10	4							
96	1	G41225320500	GUIDE	1							
97	1	G40010100816	BOLT M6*16	1							
98	1	G40020100008	NUT M8	1							
99	1	G40027100008	WASHER M8	1							
100	1	G40026100008	WASHER M8	1							
101	1	G40010100820	BOLT M8*20	1							
102	1	G40027100008	WASHER M8	1							

Fig.15. ROTARY

15. ROTARY



N135361

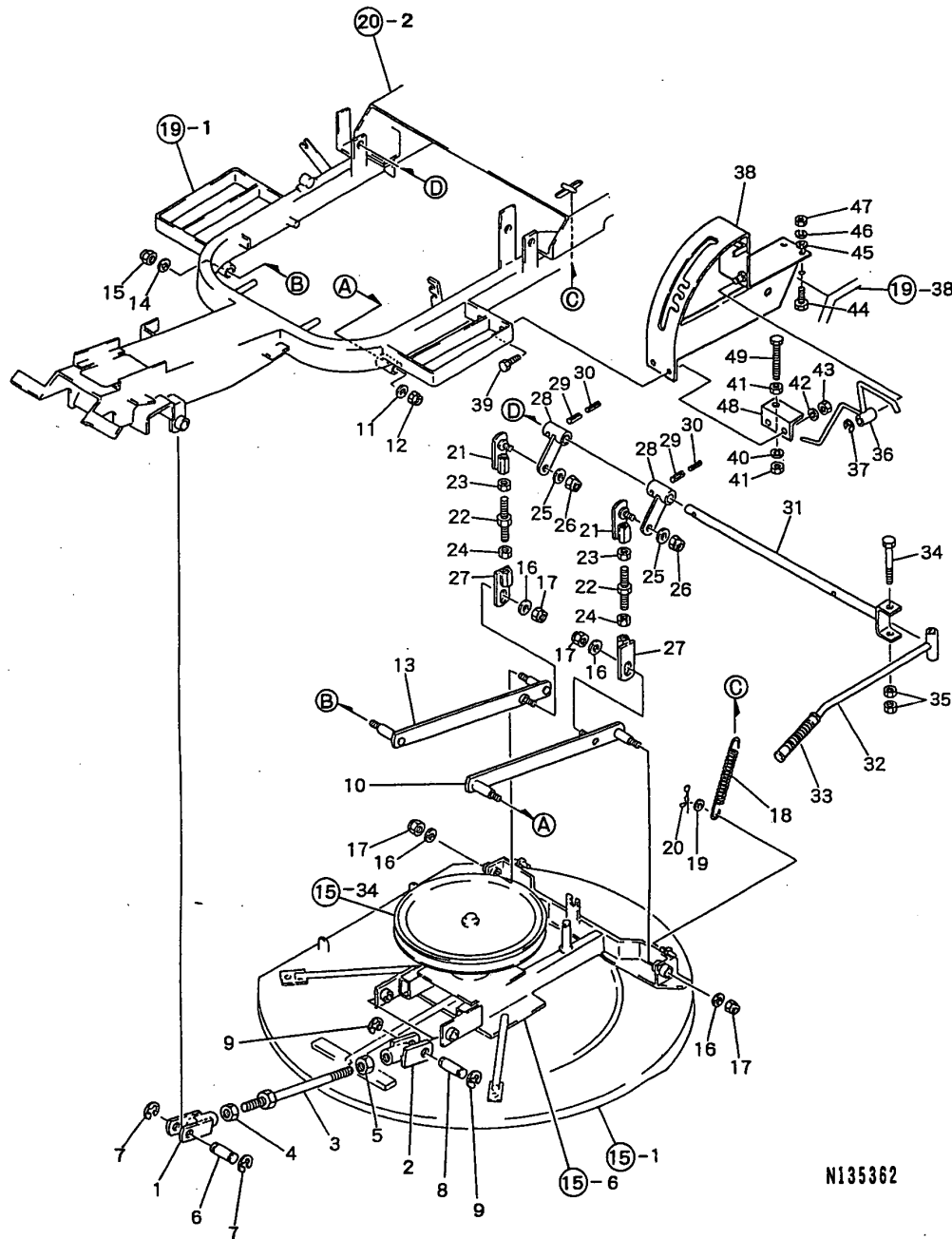
(A)=YRM831VH
(B)=
(C)=

(D)=
(E)=
(F)=

REF.	LEV.	PARTS NO.	DESCRIPTION	QTY						I	R
				(A)	(B)	(C)	(D)	(E)	(F)		
103	1	G40026100008	WASHER M8	1							
104	1	G40010100820	BOLT M8*20	1							
105	1	G40027100008	WASHER M8	1							

Fig.16. REAP HEIGHT ADJUSTMENT

16. REAP HEIGHT ADJUSTMENT



(A)=YRM831VH

(B)=

(C)=

(D)=

(E)=

(F)=

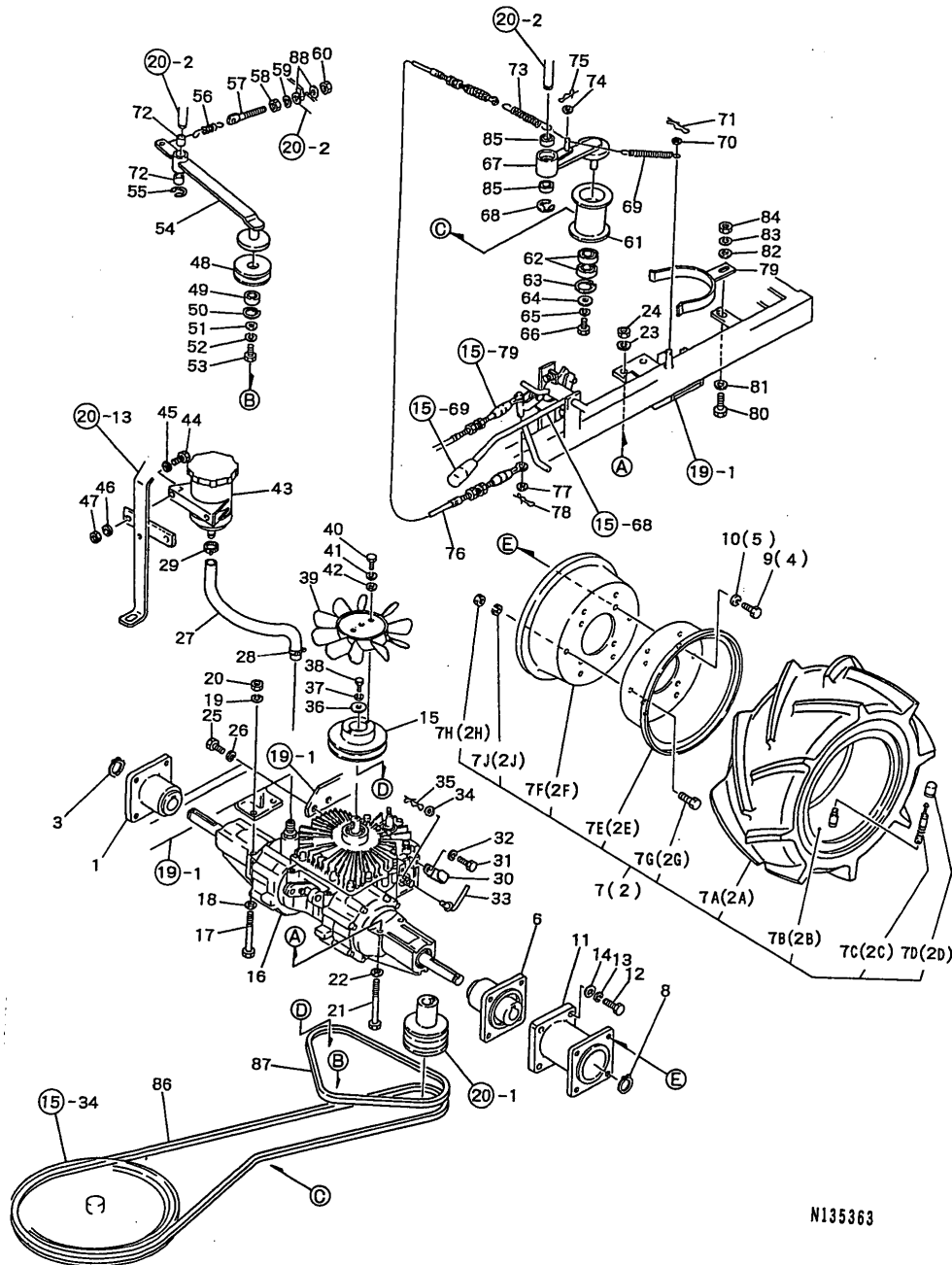
REF.	LEV.	PARTS NO.	DESCRIPTION	QTY						I	R
				(A)	(B)	(C)	(D)	(E)	(F)		
1	1	G41216220100	CLEVIS,R HAND SCREW	2							
2	1	G41216220200	CLEVIS,L,HAND SCREW	2							
3	1	G41216220300	ROD,FRONT LINK	2							
4	1	G40020200016	NUT M16XP1.5	2							
5	1	G40020109110	NUT M16XP1.5,L HAND	2							
6	1	G41216220400	PIN LINK	2							
7	1	G40036800012	RING,STOP E12	4							
8	1	G41216220400	PIN LINK	2							
9	1	G40036800012	RING,STOP E12	4							
10	1	G41206220200	LINK,REAR	1							
11	1	G46032201000	WASHER 30X11X2.3	1							
12	1	G40022400010	U-NUT M10	1							
13	1	G41206220200	LINK,REAR	1							
14	1	G46032201000	WASHER 30X11X2.3	1							
15	1	G40022400010	U-NUT M10	1							
16	1	G46032201000	WASHER 30X11X2.3	4							
17	1	G40022400010	U-NUT M10	4							
18	1	G41305322400	SPRING,ROTARY	2							
19	1	G40026100010	WASHER M10	2							
20	1	G40031199010	PIN,STOPPPER 10	2							
21	1	G41216220600	LINK,ROTRY U/D UPPER	2							
22	1	G41216220700	TURNBUCKLE,ROTRY.U/D	2							
23	1	G40020100012	NUT M12	2							
24	1	G4200000012L	NUT M12,L HAND SCREW	2							
25	1	G46032201000	WASHER 30X11X2.3	2							
26	1	G40022400010	U-NUT M10	2							
27	1	G41216220800	LINK,ROTRY.U/D LOWER	2							
28	1	G41216220900	ARM,ROTARY UP/DOWN	2							
29	1	G40030300625	SPRING PIN 6X25	2							
30	1	G40030303525	SPRING PIN 3.5X25	2							
31	1	G41226220200	SHAFT,ROTARY UP/DOWN	1							
32	1	G41206220700	LEVER,ROTARY UP/DOWN	1							
33	1	G41206260000	GRIP	1							
34	1	G40010101090	BOLT M10X90	1							
35	1	G40020100010	NUT M10	2							
36	1	G41226220300	ARM,ROTARY CLUTCH	1							
37	1	G40036800010	RETAINING RING E10	1							
38	1	G41226220100	GUIDE,ROTARY UP/DOWN	1							
39	1	G40010100820	BOLT M8*20	2							
40	1	G40027100010	WASHER M10	1							
41	1	G40020100010	NUT M10	2							
42	1	G40027100008	WASHER M8	2							
43	1	G40020100008	NUT M8	2							
44	1	G40010100820	BOLT M8*20	2							
45	1	G40026100008	WASHER M8	2							
46	1	G40027100008	WASHER M8	2							
47	1	G40020100008	NUT M8	2							
48	1	G41316221400	STOPPER,REAP.HEIGHT	1							
49	1	G40100000088	BOLT M10X100	1							

Fig.17. REAR WHEEL,HST,TRANSMISSION

(A)=YRM831VH
(B)=
(C)=

(D)=
(E)=
(F)=

17. REAR WHEEL, HST, TRANSMISSION



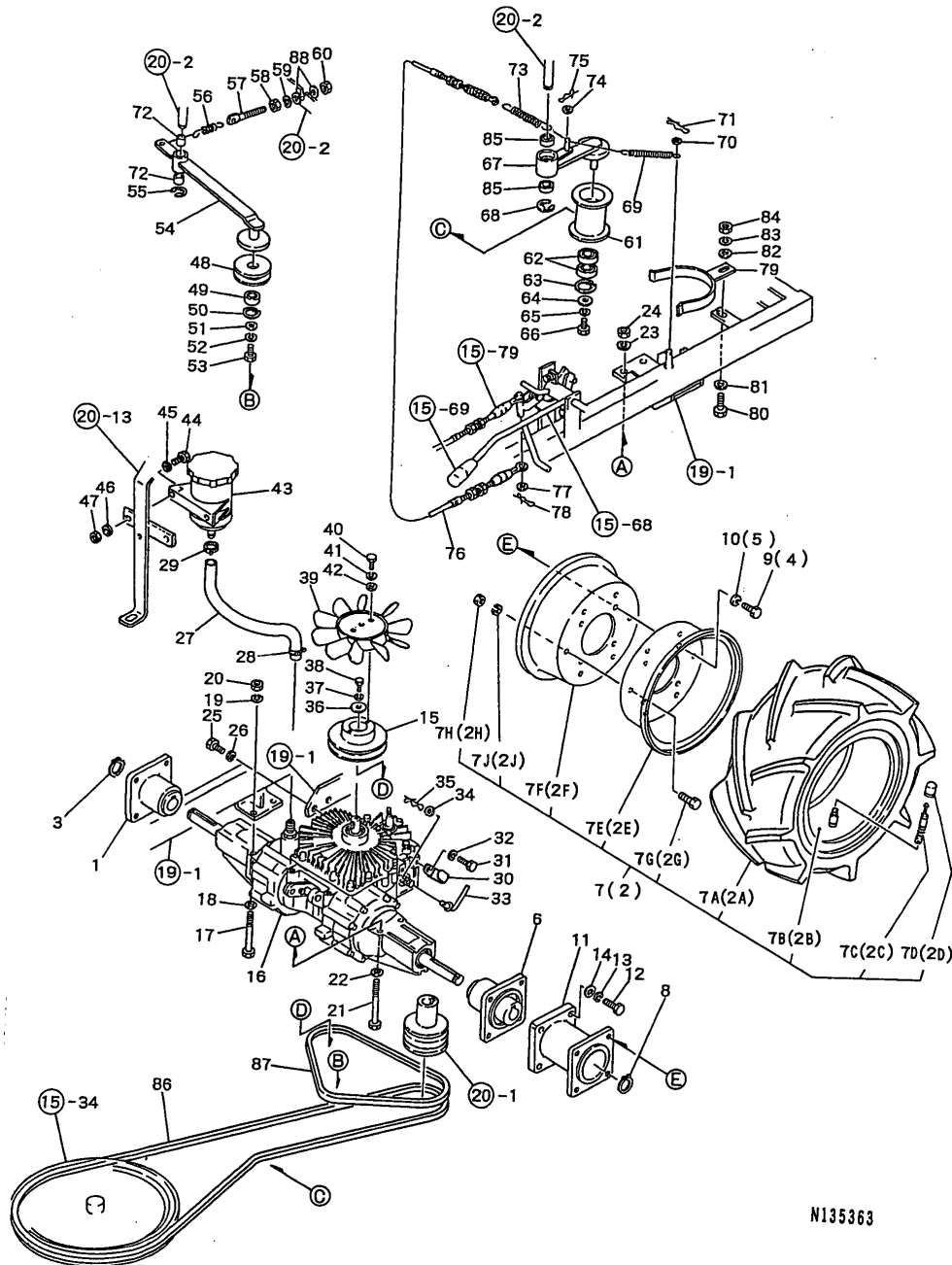
REF.	LEV.	PARTS NO.	DESCRIPTION	QTY						I	R
				(A)	(B)	(C)	(D)	(E)	(F)		
1	1	G41200220500	HUB,REAR WHEEL	1							
2	1	G41200260300	TIRE R ASSY.	1							
2A	2	G41200260301	TIRE	1							
2B	2	G41200260302	TUBE	1							
2C	2	G41200260303	VALVE	1							
2D	2	G41200260304	CAP,VALVE	1							
2E	2	G41200260305	WHEEL A	1							
2F	2	G41200260306	WHEEL B	1							
2G	2	G40010100816	BOLT M6*16	6							
2H	2	G40020100008	NUT M8	6							
2J	2	G40027100008	WASHER M8	6							
3	1	G41200260700	RING,STOP	1							
4	1	G40010101020	BOLT M10X20	4							
5	1	G40027100010	WASHER M10	4							
6	1	G41200220500	HUB,REAR WHEEL	1							
7	1	G41200260400	TIRE L ASSY	1							
7A	2	G41200260301	TIRE	1							
7B	2	G41200260302	TUBE	1							
7C	2	G41200260303	VALVE	1							
7D	2	G41200260304	CAP,VALVE	1							
7E	2	G41200260305	WHEEL A	1							
7F	2	G41200260306	WHEEL B	1							
7G	2	G40010100816	BOLT M6*16	6							
7H	2	G40020100008	NUT M8	6							
7J	2	G40027100008	WASHER M8	6							
8	1	G41200260700	RING,STOP	1							
9	1	G40010101020	BOLT M10X20	4							
10	1	G40027100010	WASHER M10	4							
11	1	G41220220200	HUB,EXTENSION	1							
12	1	G40010111030	BOLT M10X30	4							
13	1	G40027100010	WASHER M10	4							
14	1	G40026100010	WASHER M10	4							
15	1	G41203020000	PULLEY,HST	1							
16	1	G41203060100	AXLE,HYDRAULIC TRANS	1							
17	1	G40010101080	BOLT M10X80	2							
18	1	G40026100010	WASHER M10	2							
19	1	G40027100010	WASHER M10	2							
20	1	G40020100010	NUT M10	2							
21	1	G40010101080	BOLT M10X80	2							
22	1	G40026100010	WASHER M10	2							
23	1	G40027100010	WASHER M10	2							
24	1	G40020100010	NUT M10	2							
25	1	G40151516020	BOLT	2							
26	1	G40027151618	SPRING WASHER	2							
27	1	G41203060000	HOSE 23X16.2X280	1							
28	1	G40500003002	BAND 25,TYPE B	1							
29	1	G40500003002	BAND 25,TYPE B	1							
30	1	G42399111040	CLAMP M8	1							
31	1	G40150516010	BOLT	1							
32	1	G40027151618	SPRING WASHER	1							
33	1	G41203020200	LEVER,DAMP VALVE	1							

Fig.17. REAR WHEEL,HST,TRANSMISSION

(A)=YRM831VH
(B)=
(C)=

(D)=
(E)=
(F)=

17. REAR WHEEL, HST, TRANSMISSION



REF.	LEV.	PARTS NO.	DESCRIPTION	QTY						I	R
				(A)	(B)	(C)	(D)	(E)	(F)		
34	1	G40026100006	WASHER M6	1							
35	1	G40031199006	PIN 6,STPRD.STRAIGHT	1							
36	1	G46032201010	WASHER 30X7X3.2	1							
37	1	G40027114020	SPRING WASHER	1							
38	1	G40151140015	BOLT	1							
39	1	G41203020100	FAN,HST	1							
40	1	G40010100616	BOLT M6*16	2							
41	1	G40027100006	WASHER M6	2							
42	1	G40026100006	WASHER M6	2							
43	1	G4106011	TANK,EXPANSION	1							
44	1	G40010100616	BOLT M6*16	2							
45	1	G40026100006	WASHER M6	2							
46	1	G40027100006	WASHER M6	2							
47	1	G40020100006	NUT M6	2							
48	1	G41202120400	PULLEY,HST TENSION	1							
49	1	G4040146201A	BALL BEARING 6201	1							
50	1	G40036500032	RETAINING RING R32	1							
51	1	G46066070000	WASHER 16*7*1.6	1							
52	1	G40027100006	WASHER M6	1							
53	1	G40010100616	BOLT M6*16	1							
54	1	G41222121200	ARM,HST TENSION	1							
55	1	G40036800012	RING,STOP E12	1							
56	1	G46062105000	SPRING	1							
57	1	G47252221000	PLATE	1							
58	1	G40020100008	NUT M8	1							
59	1	G40027100008	WASHER M8	1							
60	1	G40020100008	NUT M8	1							
61	1	G41202120200	PULLEY,ROTARY TENS	1							
62	1	G4040146201A	BALL BEARING 6201	2							
63	1	G40036500032	RETAINING RING R32	1							
64	1	G4030-10008	WASHER M8	1							
65	1	G40027100008	WASHER M8	1							
66	1	G40010100816	BOLT M6*16	1							
67	1	G41222121000	ARM,ROTARY,TENSHON	1							
68	1	G40036800015	RETAINING RING E15	1							
69	1	G47862450020	SPRING	1							
70	1	G40026100008	WASHER M8	1							
71	1	G40031199008	PIN 8,STPRD.STRAIGHT	1							
72	1	G400MB1615DU	BUSH,DU	2							
73	1	G44642100010	SPRING	1							
74	1	G40026100008	WASHER M8	1							
75	1	G40031199008	PIN 8,STPRD.STRAIGHT	1							
76	1	G41205360200	WIRE,ROTARY	1							
77	1	G40026100006	WASHER M6	1							
78	1	G40031199006	PIN 6,STPRD.STRAIGHT	1							
79	1	G41202220600	STOPPER,BELT ENGINE	1							
80	1	G40100000016	BOLT M8*30	1							
81	1	G40026100008	WASHER M8	1							
82	1	G40026100008	WASHER M8	1							
83	1	G40027100008	WASHER M8	1							
84	1	G40020100008	NUT M8	1							

Fig.17. REAR WHEEL,HST,TRANSMISSION

(A)=YRM831VH

(B)=

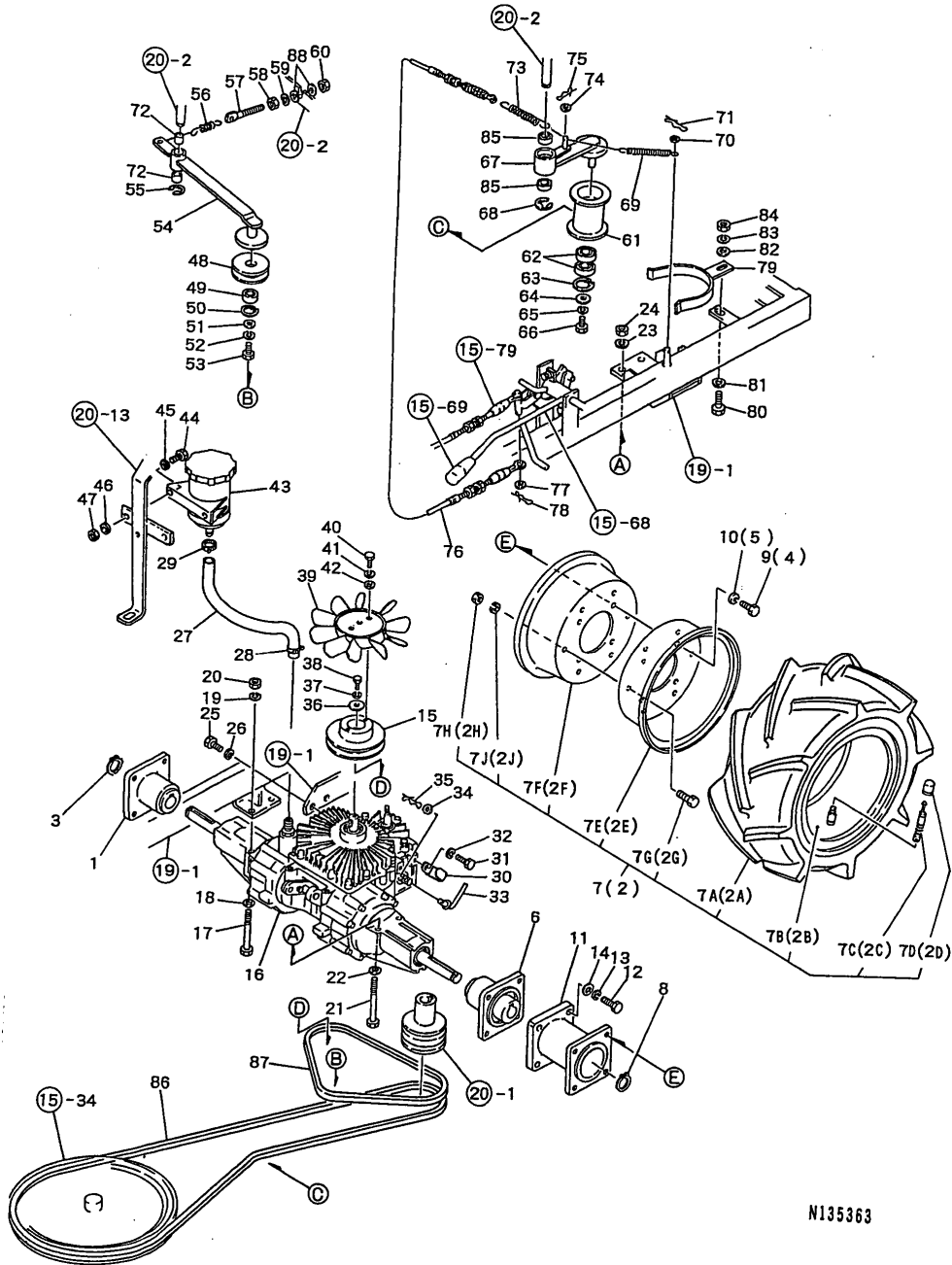
(C)=

(D)=

(E)=

(F)=

17. REAR WHEEL, HST, TRANSMISSION

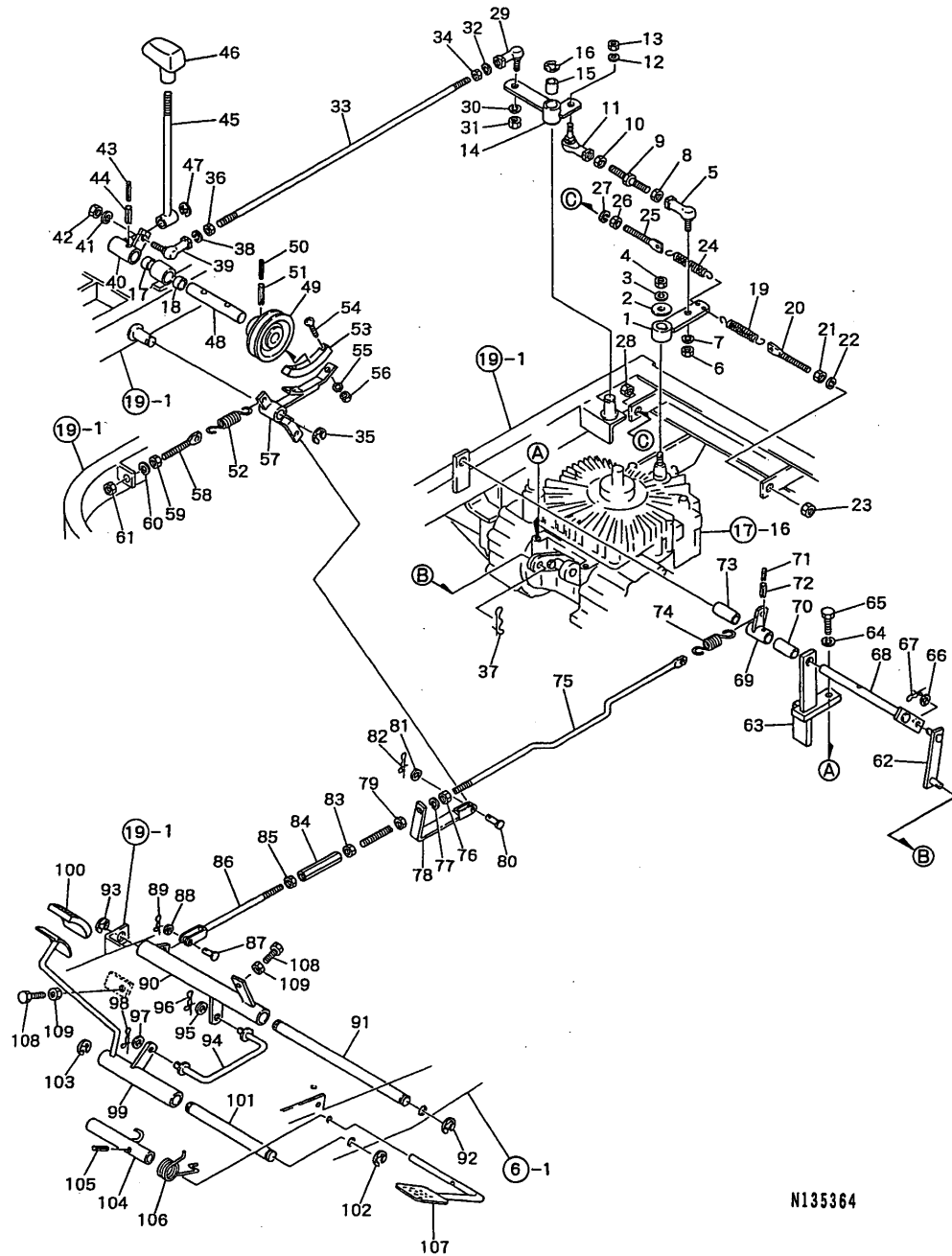


REF.	LEV.	PARTS NO.	DESCRIPTION	QTY						I	R
				(A)	(B)	(C)	(D)	(E)	(F)		
85	1	G4040146004A	BALL BEARING 6004	2							
86	1	G40080320076	V-BELT SB76,BLUE	1							
87	1	G40080320027	V-BELT	1							
88	1	G40026100008	WASHER M8	2							

N135363

Fig.18. HST CONTROL

18. HST CONTROL



N135364

(A)=YRM831VH

(B)=

(C)=

(D)=

(E)=

(F)=

REF.	LEV.	PARTS NO.	DESCRIPTION	Q'TY						I	R
				(A)	(B)	(C)	(D)	(E)	(F)		
1	1	G41316020100	ARM,HST	1							
2	1	G47082200000	WASHER 30*11*3.2	1							
3	1	G40027138016	SPRING WASHER	1							
4	1	G40020138016	NUT	1							
5	1	G47876410010	BALL,LINK	1							
6	1	G40020100008	NUT M8	1							
7	1	G40027100008	WASHER M8	1							
8	1	G40200000021	NUT M8,L HAND SCREW	1							
9	1	G41206020100	ROD,HST	1							
10	1	G40020100008	NUT M8	1							
11	1	G47876410000	BALL,RING(BL8D)	1							
12	1	G40027100008	WASHER M8	1							
13	1	G40020100008	NUT M8	1							
14	1	G41206020200	LINK,HST	1							
15	1	G400MB1420DU	BUSH,DU	1							
16	1	G40036800012	RING,STOP E12	1							
17	1	G400MB1610DU	BUSH,DU	1							
18	1	G400MB1610DU	BUSH,DU	1							
19	1	G41216021000	SPRING,HST	1							
20	1	G47252221000	PLATE	1							
21	1	G40020100008	NUT M8	1							
22	1	G40027100008	WASHER M8	1							
23	1	G40020100008	NUT M8	1							
24	1	G41216021000	SPRING,HST	1							
25	1	G47252221000	PLATE	1							
26	1	G40020100008	NUT M8	1							
27	1	G40027100008	WASHER M8	1							
28	1	G40020100008	NUT M8	1							
29	1	G47876410000	BALL,RING(BL8D)	1							
30	1	G40027100008	WASHER M8	1							
31	1	G40020100008	NUT M8	1							
32	1	G40027100008	WASHER M8	1							
33	1	G41216020100	ROD,LEVER HST	1							
34	1	G40200000021	NUT M8,L HAND SCREW	1							
35	1	G40036800012	RING,STOP E12	1							
36	1	G40020100008	NUT M8	1							
37	1	G40031199006	PIN 6,STPRD.STRAIGHT	1							
38	1	G40027100008	WASHER M8	1							
39	1	G47876410000	BALL,RING(BL8D)	1							
40	1	G41206020400	BOSS,LEVER HST	1							
41	1	G40027100008	WASHER M8	1							
42	1	G40020100008	NUT M8	1							
43	1	G40030300325	PIN,SPRING 3*25	1							
44	1	G40030300525	PIN,SPRING 5*25	1							
45	1	G41206020500	LEVER,HST	1							
46	1	G41206060000	GRIP	1							
47	1	G40036800010	RETAINING RING E10	1							
48	1	G41206020800	SHAFT,FRICTION	1							
49	1	G41206020900	PULLEY,FRICTION	1							
50	1	G40030300332	SPRING PIN 3X32	1							
51	1	G40030300532	SPRING PIN 5X32	1							

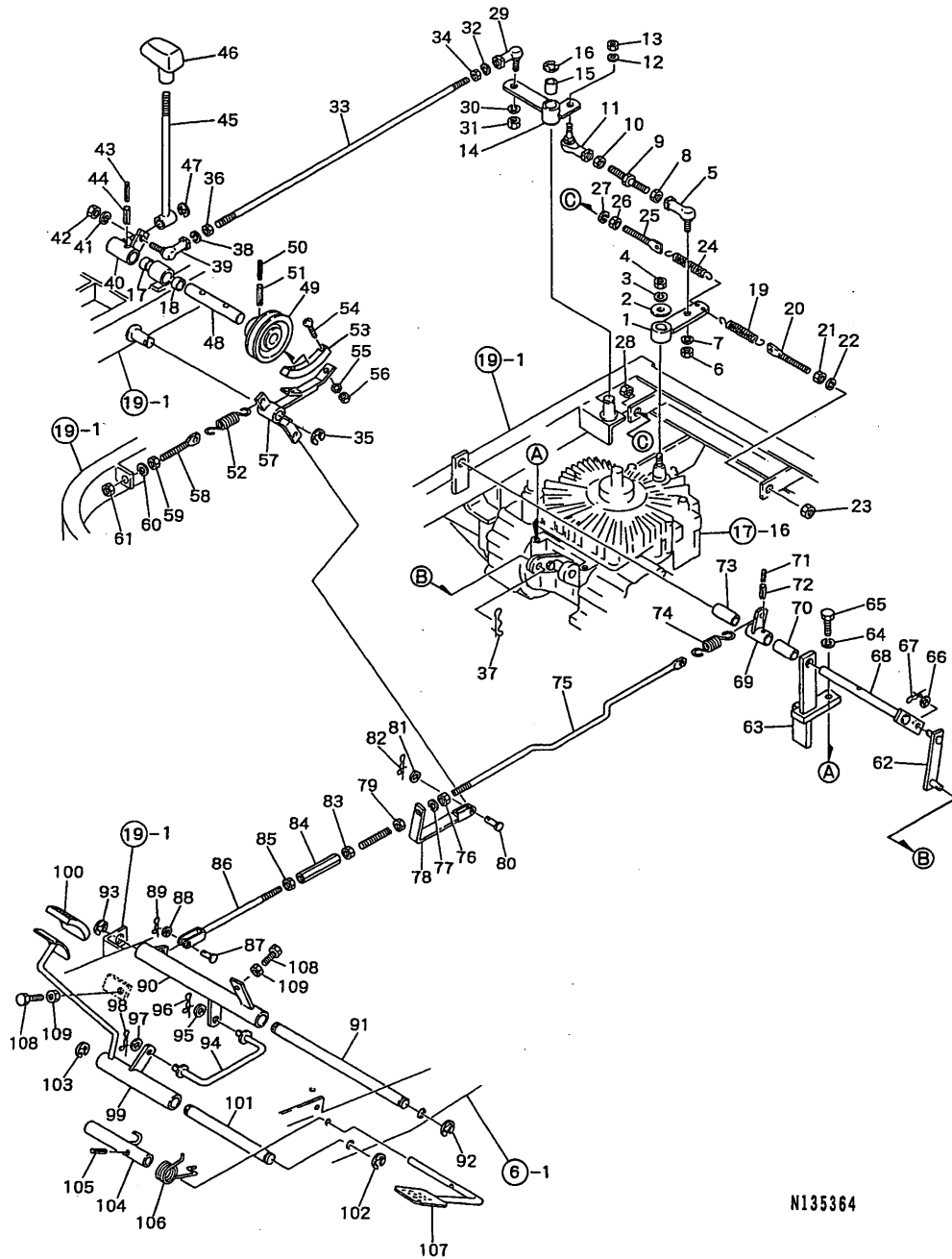
N:Old $\begin{matrix} \text{Yes} \\ \text{No} \end{matrix}$ New, Q:Old $\begin{matrix} \text{No} \\ \text{Yes} \end{matrix}$ New, R:Old $\begin{matrix} \text{Yes} \\ \text{No} \end{matrix}$ New, S:Old $\begin{matrix} \text{No} \\ \text{Yes} \end{matrix}$ New, W:Add, Z:Discontinued, F:Interchangeable by set, K:Q'ty Change

++ CONTINUE ++

(C)Copy Rights YANMAR CO.,LTD.

Fig.18. HST CONTROL

18. HST CONTROL



(A)=YRM831VH

(B)=

(C)=

(D)=

(E)=

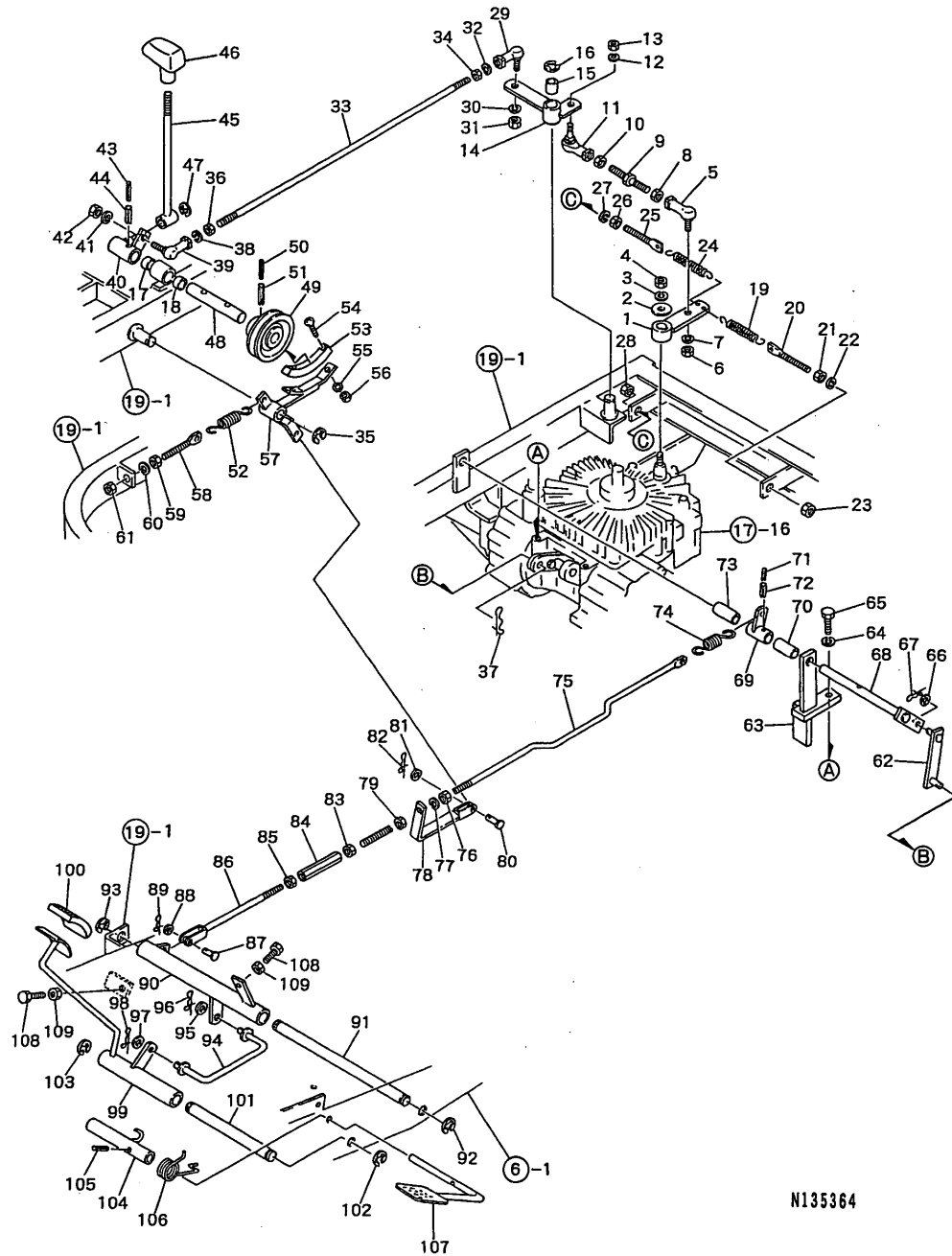
(F)=

REF.	LEV.	PARTS NO.	DESCRIPTION	QTY						I	R
				(A)	(B)	(C)	(D)	(E)	(F)		
52	1	G44012100022	SPRING	1							
53	1	G41205360100	SHOE,BRAKE	1							
54	1	G40015100315	SCREW M3X15,CRH.PAN	2							
55	1	G40027100003	SPRING WASHER M3	2							
56	1	G40020100003	NUT M3	2							
57	1	G41206021100	ARM, FRICTION	1							
58	1	G47252221000	PLATE	1							
59	1	G40020100008	NUT M8	1							
60	1	G40027100008	WASHER M8	1							
61	1	G40020100008	NUT M8	1							
62	1	G41316320200	ROD,BRAKE HST	1							
63	1	G41316320100	STAY,BRAKE HST	1							
64	1	G40027151618	SPRING WASHER	1							
65	1	G40150516025	BOLT	1							
66	1	G40026100006	WASHER M6	1							
67	1	G40031199006	PIN 6,STPRD.STRAIGHT	1							
68	1	G41206320200	SHAFT,BRAKE HST	1							
69	1	G41206321300	ARM,PARKING BRAKE	1							
70	1	G41206320300	COLLAR,BRAKE HST	1							
71	1	G40030300320	SPRING PIN 3X20	1							
72	1	G40030300520	PIN,SPRING 5*20	1							
73	1	G41206320300	COLLAR,BRAKE HST	1							
74	1	G41225320700	SPRING,DISCHARGE	1							
75	1	G41206320400	ROD,BRAKE R HND.SCRW	1							
76	1	G40020100008	NUT M8	1							
77	1	G40027100008	WASHER M8	1							
78	1	G41206021000	ROD,FRICTION	1							
79	1	G40020100008	NUT M8	1							
80	1	G46066080000	PIN,6*19	1							
81	1	G40026100006	WASHER M6	1							
82	1	G40031199006	PIN 6,STPRD.STRAIGHT	1							
83	1	G40020100008	NUT M8	1							
84	1	G46066530100	TURN BUKLE M8	1							
85	1	G40200000021	NUT M8,L HAND SCREW	1							
86	1	G41206320500	ROD,BRAKE L HND.SCRW	1							
87	1	G46066080000	PIN,6*19	1							
88	1	G40026100006	WASHER M6	1							
89	1	G40031199006	PIN 6,STPRD.STRAIGHT	1							
90	1	G41226320300	LINK,BRAKE	1							
91	1	G41206320700	SHAFT,BRAKE LING	1							
92	1	G40036800012	RING,STOP E12	1							
93	1	G40036800012	RING,STOP E12	1							
94	1	G41206320800	ROD,BRAKE PEDAL SIDE	1							
95	1	G40026100010	WASHER M10	1							
96	1	G40031199010	PIN,STOPPPER 10	1							
97	1	G40026100010	WASHER M10	1							
98	1	G40031199010	PIN,STOPPPER 10	1							
99	1	G41206320900	PEDAL,BRAKE	1							
100	1	G41206360000	RUBBER,PEDAL	1							
101	1	G41206321000	SHAFT,PEDAL	1							
102	1	G40036800012	RING,STOP E12	1							

N:Old $\begin{matrix} \text{Yes} \\ \text{No} \end{matrix}$ New, Q:Old $\begin{matrix} \text{No} \\ \text{Yes} \end{matrix}$ New, R:Old $\begin{matrix} \text{Yes} \\ \text{No} \end{matrix}$ New, S:Old $\begin{matrix} \text{No} \\ \text{Yes} \end{matrix}$ New, W:Add, Z:Discontinued, F:Interchangeable by set, K:Q'ty Change
 ++ CONTINUE ++
 (C)Copy Rights YANMAR CO.,LTD.

Fig.18. HST CONTROL

18. HST CONTROL



N135364

(A)=YRM831VH

(B)=

(C)=

(D)=

(E)=

(F)=

REF.	LEV.	PARTS NO.	DESCRIPTION	QTY						I	R
				(A)	(B)	(C)	(D)	(E)	(F)		
103	1	G40036800012	RING,STOP E12	1							
104	1	G41206321100	STOPPER,PARK.BRAKE	1							
105	1	G40030300420	PIN,SPRING 4*20	1							
106	1	G46062104040	SPRING	1							
107	1	G41206321400	LEVER,PARKING BRAKE	1							
108	1	G40100000016	BOLT M8*30	2							
109	1	G40020100008	NUT M8	2							

Fig.19. FRAME,COVER,SEAT

(A)=YRM831VH

(B)=

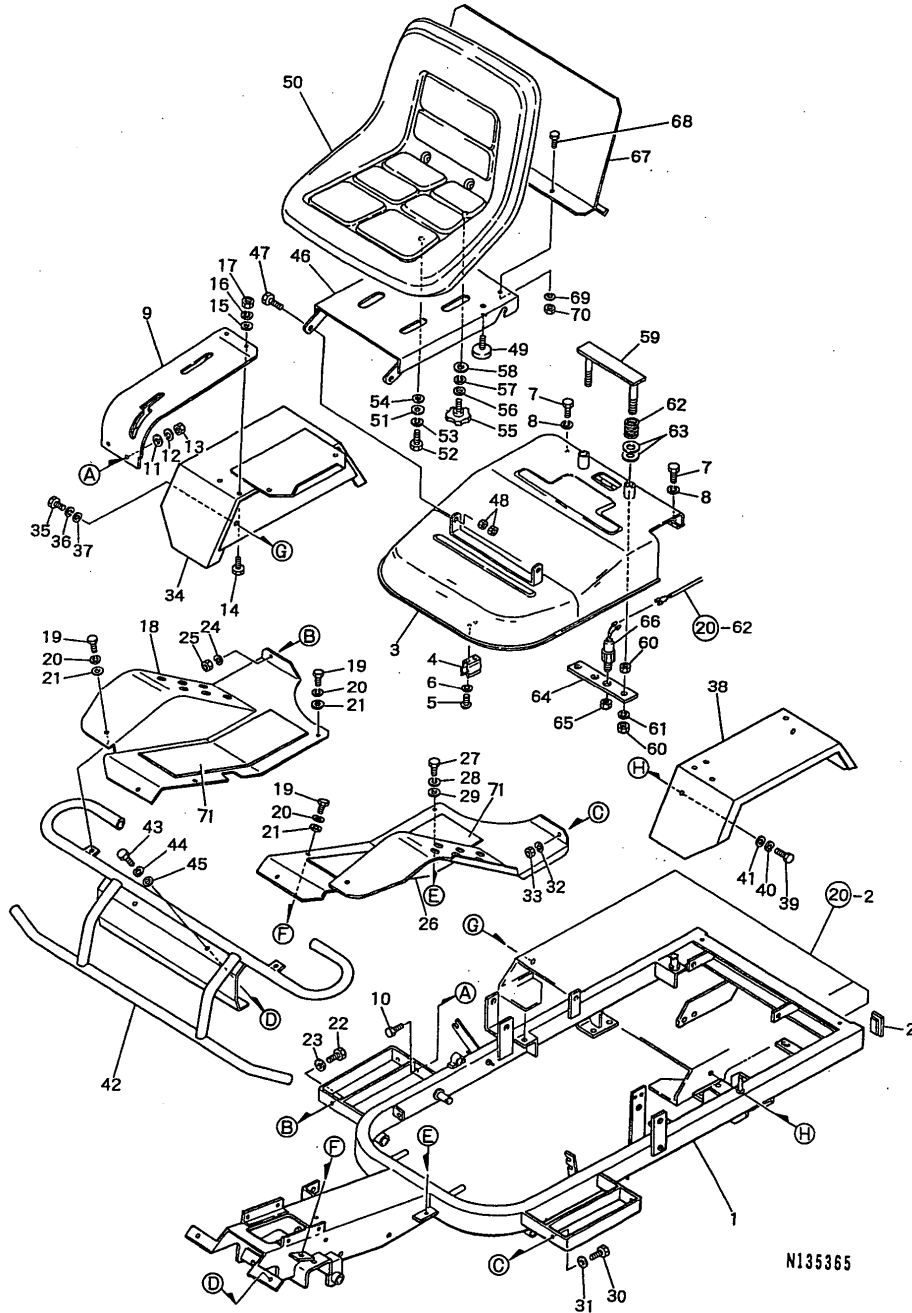
(C)=

(D)=

(E)=

(F)=

19. FRAME, COVER, SEAT



REF.	LEV.	PARTS NO.	DESCRIPTION	QTY						I	R
				(A)	(B)	(C)	(D)	(E)	(F)		
1	1	G41221050400	PL.ASSY.,FRAME	1							
2	1	G47396207000	CAP 50X30,RUBBER	2							
3	1	G41201150000	PL.ASSY.,COVER	1							
4	1	G44016111000	FIXTURE,SPLINKL.PIPE	2							
5	1	G40015100610	BOLT M6*10	4							
6	1	G40027100006	WASHER M6	4							
7	1	G40010100816	BOLT M6*16	2							
8	1	G40027100008	WASHER M8	2							
9	1	G41221150100	PL.ASSY.,COVER RH	1							
10	1	G40010100820	BOLT M8*20	2							
11	1	G40026100008	WASHER M8	2							
12	1	G40027100008	WASHER M8	2							
13	1	G40020100008	NUT M8	2							
14	1	G40010100816	BOLT M6*16	2							
15	1	G40026100008	WASHER M8	2							
16	1	G40027100008	WASHER M8	2							
17	1	G40020100008	NUT M8	2							
18	1	G41221120200	FENDER R,FRONT	1							
19	1	G40010100816	BOLT M6*16	3							
20	1	G40027100008	WASHER M8	3							
21	1	G40026100008	WASHER M8	3							
22	1	G40010100820	BOLT M8*20	1							
23	1	G40026100008	WASHER M8	1							
24	1	G40027100008	WASHER M8	1							
25	1	G40020100008	NUT M8	1							
26	1	G41221120300	FENDER L,FRONT	1							
27	1	G40010100816	BOLT M6*16	3							
28	1	G40027100008	WASHER M8	3							
29	1	G40026100008	WASHER M8	3							
30	1	G40010100820	BOLT M8*20	1							
31	1	G40026100008	WASHER M8	1							
32	1	G40027100008	WASHER M8	1							
33	1	G40020100008	NUT M8	1							
34	1	G41221121100	FENDER R,REAR	1							
35	1	G40010100816	BOLT M6*16	2							
36	1	G40027100008	WASHER M8	2							
37	1	G40026100008	WASHER M8	2							
38	1	G41221121200	FENDER L,REAR	1							
39	1	G40010100816	BOLT M6*16	2							
40	1	G40027100008	WASHER M8	2							
41	1	G40026100008	WASHER M8	2							
42	1	G41221121000	BUMPER,FRONT	1							
43	1	G40010100820	BOLT M8*20	2							
44	1	G40027100008	WASHER M8	2							
45	1	G40026100008	WASHER M8	2							
46	1	G41221820100	STAY,SEAT	1							
47	1	G40010101030	BOLT M10X30	2							
48	1	G40020100010	NUT M10	4							
49	1	G46376512000	RUBBER,CUSSION	2							
50	1	G40701860600	SEAT	1							
51	1	G46002201000	WASHER 30X9X3.2	3							

N:Old $\begin{matrix} \text{Yes} \\ \text{No} \end{matrix}$ New, Q:Old $\begin{matrix} \text{No} \\ \text{Yes} \end{matrix}$ New, R:Old $\begin{matrix} \text{Yes} \\ \text{No} \end{matrix}$ New, S:Old $\begin{matrix} \text{No} \\ \text{Yes} \end{matrix}$ New, W:Add, Z:Discontinued, F:Interchangeable by set, K:Q'ty Change
 ++ CONTINUE ++

Fig.19. FRAME,COVER,SEAT

(A)=YRM831VH

(B)=

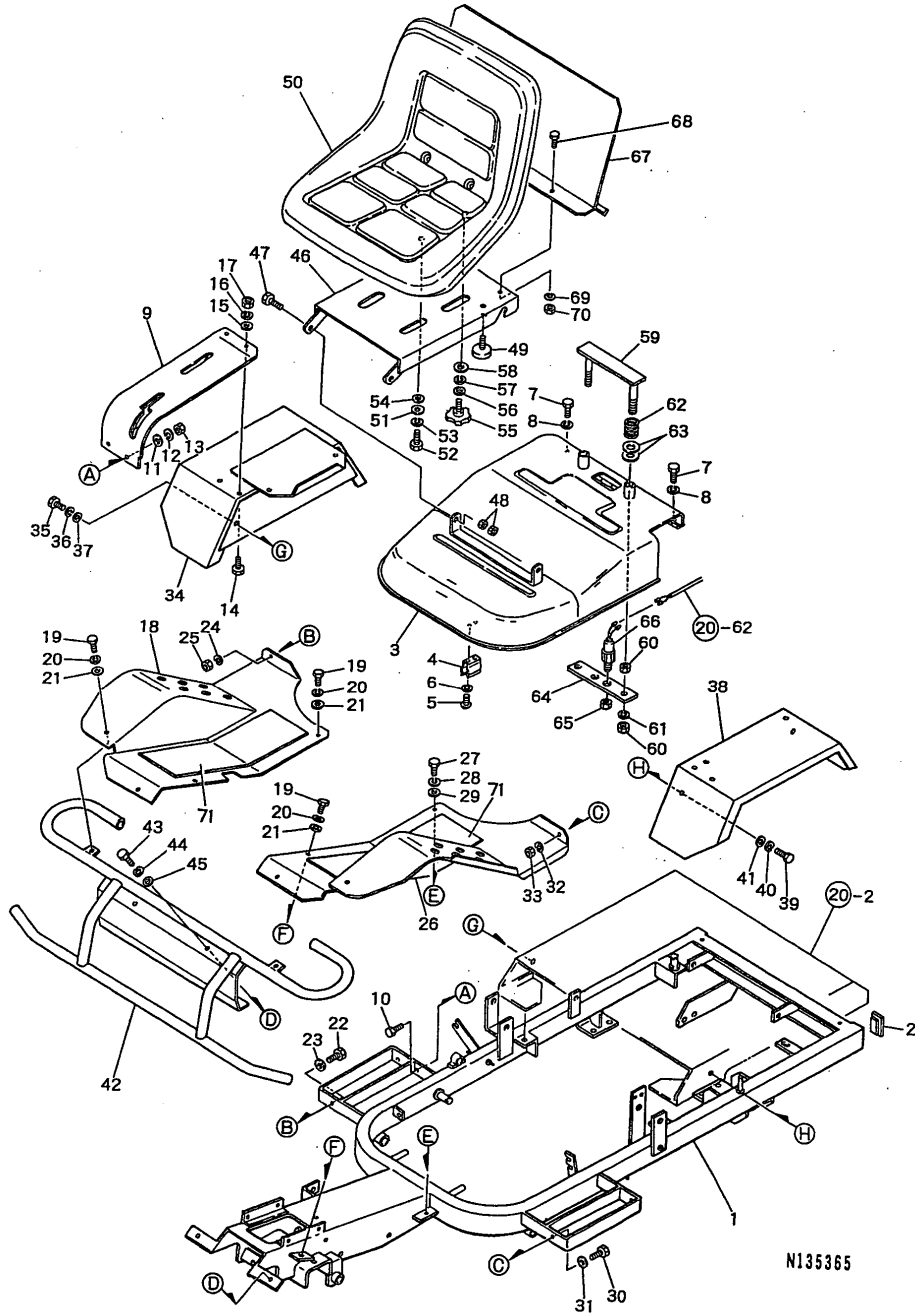
(C)=

(D)=

(E)=

(F)=

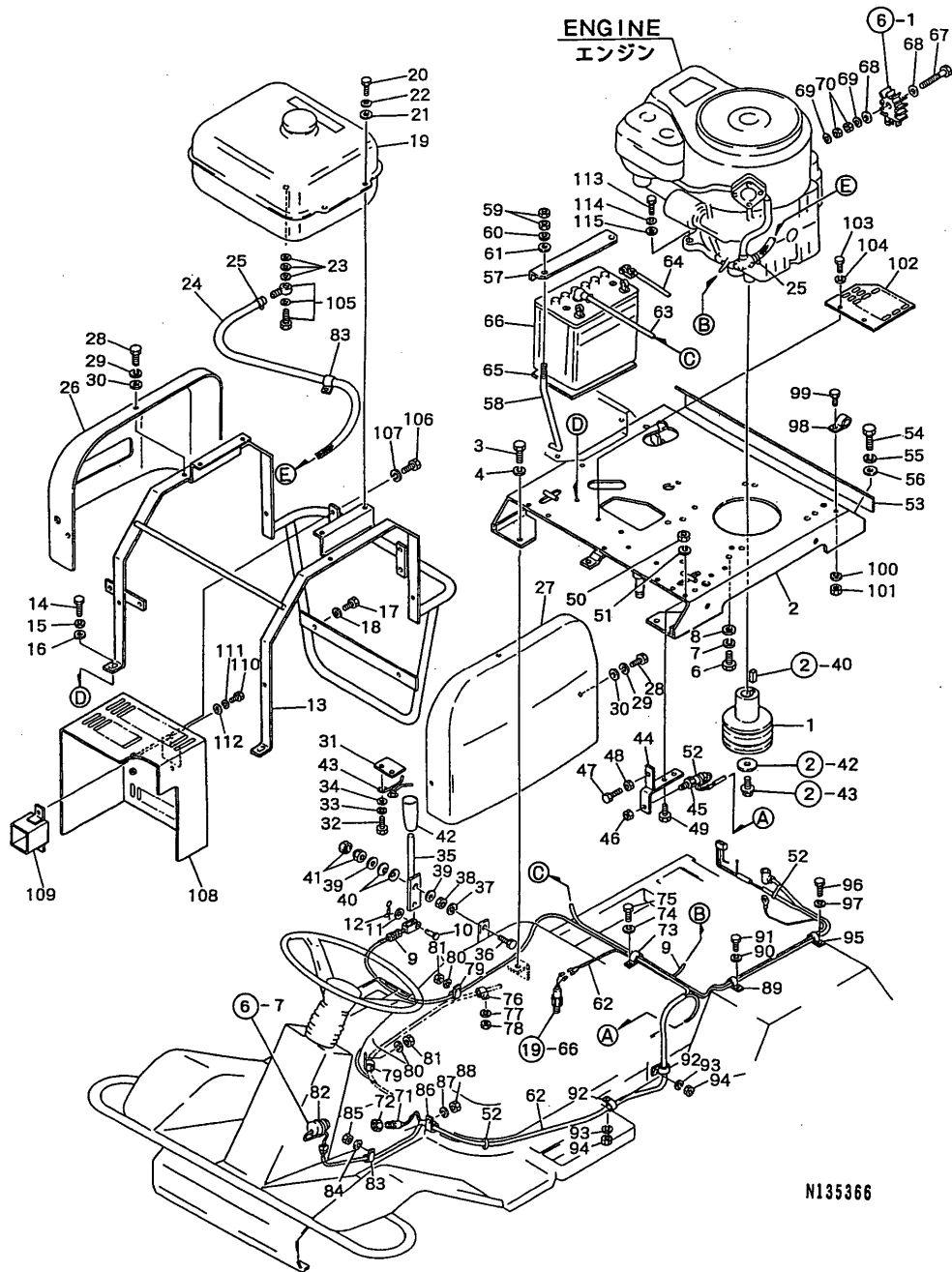
19. FRAME, COVER, SEAT



REF.	LEV.	PARTS NO.	DESCRIPTION	QTY						I	R
				(A)	(B)	(C)	(D)	(E)	(F)		
52	1	G40010100816	BOLT M6*16	3							
53	1	G40027100008	WASHER M8	3							
54	1	G46102040000	WASHER 22X9X3.2	3							
55	1	G40905260000	BOLT M8*20	1							
56	1	G40026100008	WASHER M8	1							
57	1	G40027100008	WASHER M8	1							
58	1	G46002201000	WASHER 30X9X3.2	1							
59	1	G41206420000	BRACKET	1							
60	1	G40020100008	NUT M8	4							
61	1	G40027100008	WASHER M8	2							
62	1	G41206420100	SPRING	2							
63	1	G40026100020	PLAIN WASHER M20	4							
64	1	G41206420200	BRACKET	1							
65	1	G40020400014	NUT M14XP1.5	1							
66	1	G42385200730	SWITCH	1							
67	1	G41221820200	PLATE,HEAT INSULATOR	1							
68	1	G40010100816	BOLT M6*16	2							
69	1	G40027100008	WASHER M8	2							
70	1	G40020100008	NUT M8	2							
71	1	G41301160200	MAT	2							

Fig.20. ENGINE RELATED

20. ENGINE RELATED



(A)=YRM831VH
(B)=
(C)=

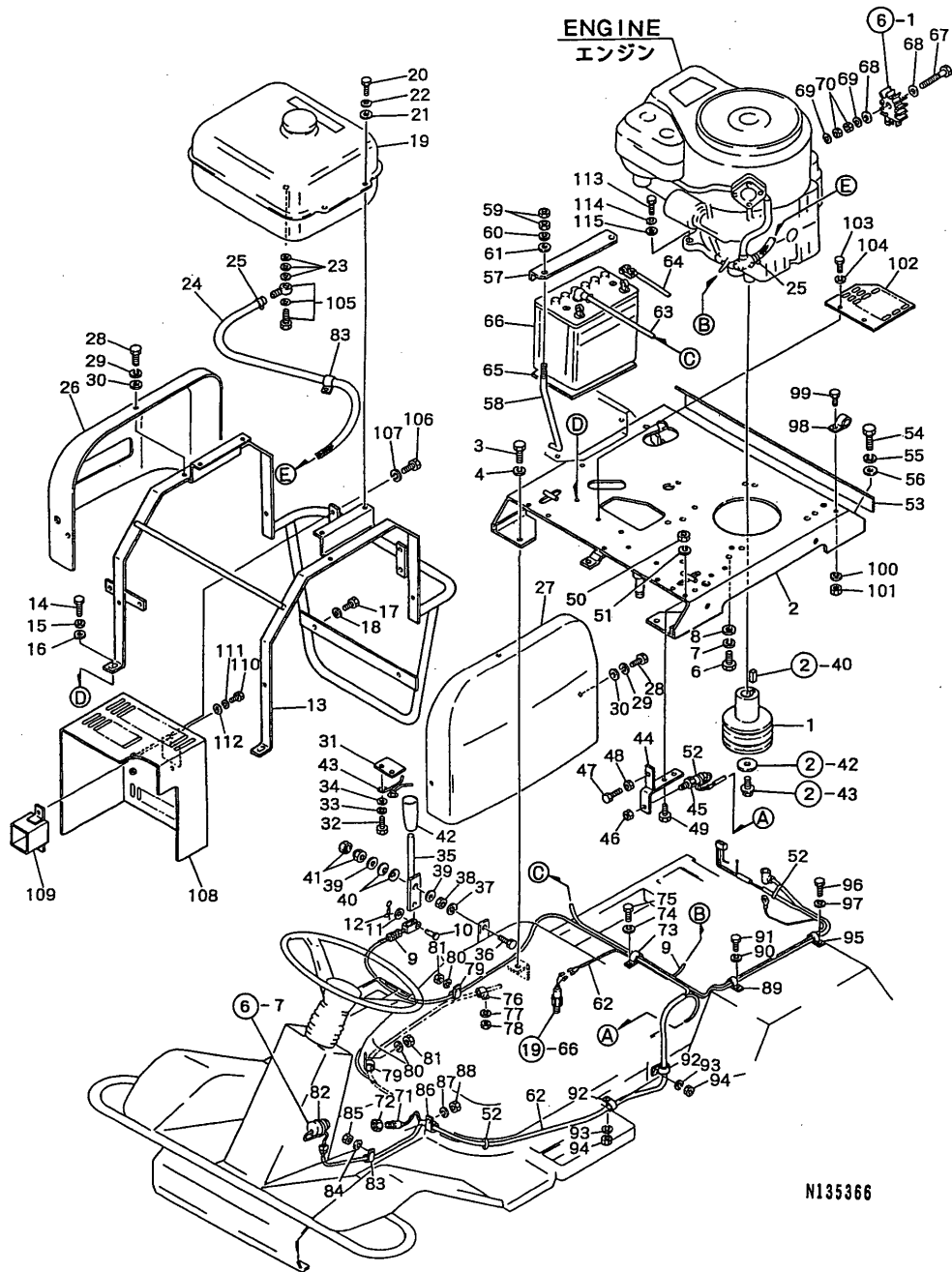
(D)=
(E)=
(F)=

REF.	LEV.	PARTS NO.	DESCRIPTION	QTY						I	R
				(A)	(B)	(C)	(D)	(E)	(F)		
1	1	G41312220100	PULLY(ENGINE	1							
2	1	G41222224800	BASE,ENGINE	1							
3	1	G40010101025	BOLT M10*25	4							
4	1	G40027100010	WASHER M10	4							
5	1	G4030-10008	WASHER M8	4							
6	1	G40100000015	BOLT M8*25	4							
7	1	G40027100008	WASHER M8	4							
8	1	G4030-10008	WASHER M8	4							
9	1	G41202261001	WIRE FC420W,THROTTLE	1							
10	1	G46066080000	PIN,6*19	1							
11	1	G40026100006	WASHER M6	1							
12	1	G40031199006	PIN 6,STPRD.STRAIGHT	1							
13	1	G41222225100	STAY,TANK	1							
14	1	G40010101025	BOLT M10*25	2							
15	1	G40027100010	WASHER M10	2							
16	1	G4030-10010	WASHER M10	2							
17	1	G40010100820	BOLT M8*20	2							
18	1	G40027100008	WASHER M8	2							
19	1	G41222250100	PL.ASSY.,FUEL TANK	1							
20	1	G40010100816	BOLT M6*16	4							
21	1	G40026100008	WASHER M8	4							
22	1	G40027100008	WASHER M8	4							
23	1	G41222261000	PAKING	3							
24	1	G41222260300	HOSE 8X14X650,FUEL	1							
25	1	G44816282000	BAND,JUBILEE	2							
26	1	G41222260400	COVER R,ENGINE	1							
27	1	G41222260500	COVER L,ENGINE	1							
28	1	G40010100816	BOLT M6*16	6							
29	1	G40027100008	WASHER M8	6							
30	1	G47022200010	WASHER 22*9*1.6	6							
31	1	G41202220800	STOPPER,THROTTLE	1							
32	1	G40010100614	BOLT M6X14	2							
33	1	G40027100006	WASHER M6	2							
34	1	G46066070000	WASHER 16*7*1.6	2							
35	1	G41206020600	LEVER,THROTTLE	1							
36	1	G40100000046	BOLT M12X55	1							
37	1	G40027100012	WASHER M12	1							
38	1	G40020100012	NUT M12	1							
39	1	G40026100012	WASHER M12	2							
40	1	G40265000012	SPRING 12,BLLVL	2							
41	1	G402852212	NUT M12,HARD LOCK	1							
42	1	G40315260000	GRIP	1							
43	1	G41206020700	SPRING,LVR.THROTTLE	1							
44	1	G41206420300	BRACKET	1							
45	1	G42385200730	SWITCH	1							
46	1	G40020400014	NUT M14XP1.5	1							
47	1	G40100000016	BOLT M8*30	1							
48	1	G40020100008	NUT M8	1							
49	1	G40010100820	BOLT M8*20	2							
50	1	G40020100008	NUT M8	2							
51	1	G40027100008	WASHER M8	2							

N:Old $\begin{matrix} \leftarrow \text{Yes} \\ \text{No} \end{matrix}$ New, Q:Old $\begin{matrix} \leftarrow \text{No} \\ \text{Yes} \end{matrix}$ New, R:Old $\begin{matrix} \leftarrow \text{Yes} \\ \text{Yes} \end{matrix}$ New, S:Old $\begin{matrix} \leftarrow \text{No} \\ \text{No} \end{matrix}$ New, W:Add, Z:Discontinued, F:Interchangeable by set, K:Q'ty Change
++ CONTINUE ++

Fig.20. ENGINE RELATED

20. ENGINE RELATED



(A)=YRM831VH
(B)=
(C)=

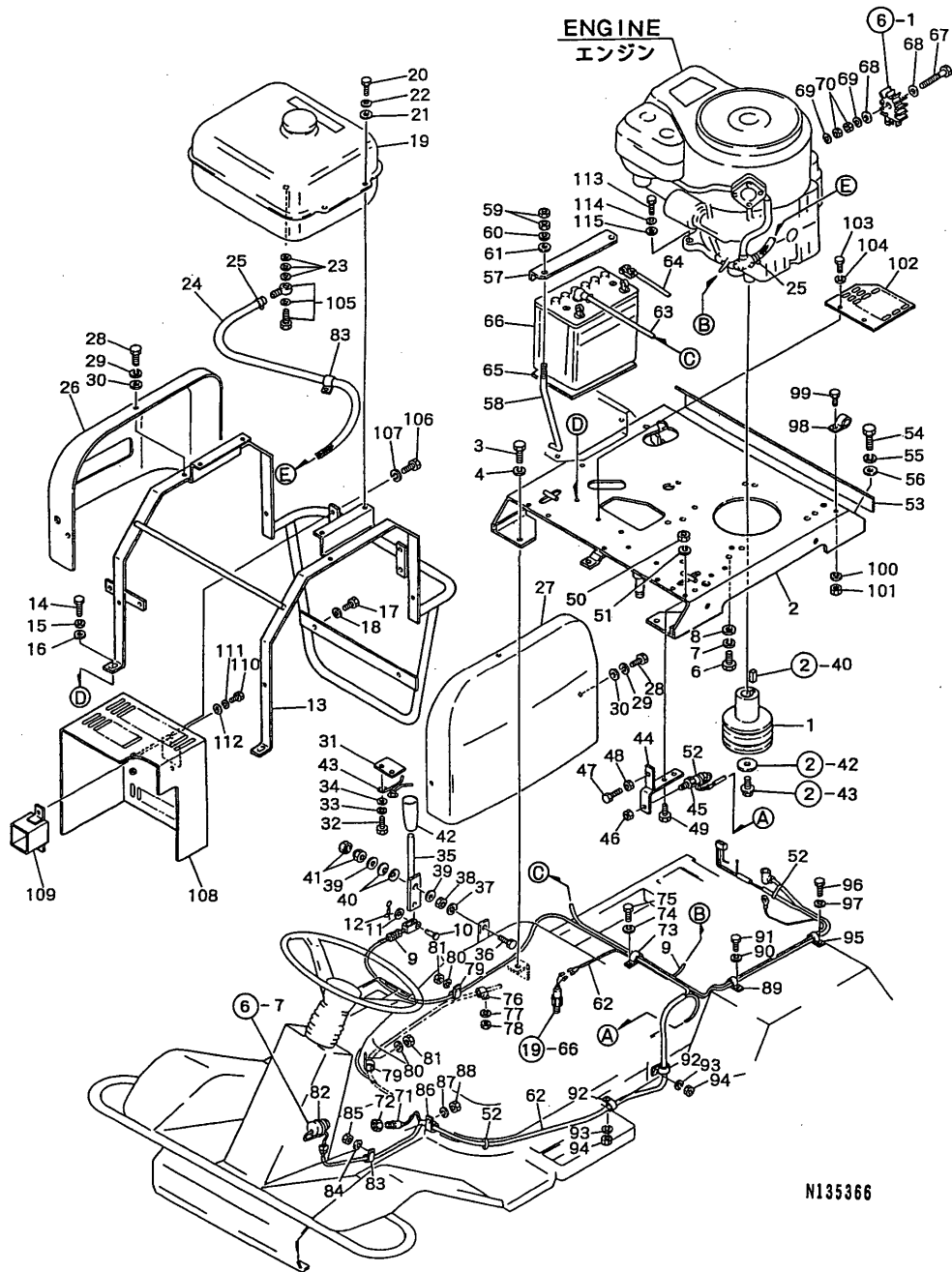
(D)=
(E)=
(F)=

REF.	LEV.	PARTS NO.	DESCRIPTION	QTY						I	R
				(A)	(B)	(C)	(D)	(E)	(F)		
52	1	G40329060000	CLAMP,WIRE	4							
53	1	G41201150700	PL.ASSY.,COVER REAR	1							
54	1	G40010100816	BOLT M6*16	2							
55	1	G40027100008	WASHER M8	2							
56	1	G40026100008	WASHER M8	2							
57	1	G41211120300	STAY	1							
58	1	G41208020100	SCREW,BATTERY	2							
59	1	G40020100006	NUT M6	4							
60	1	G40027100006	WASHER M6	2							
61	1	G40026100006	WASHER M6	2							
62	1	G41228160300	HARNES A	1							
63	1	G41208165200	CORD,BATTERY(+)	1							
64	1	G41208163300	CORD,BATTERY(-)	1							
65	1	G41208163400	RUBBER 185X125X3,BAT	1							
66	1	G41208169000	BATTERY	1							
67	1	G40000006060	BOLT M6X60	1							
68	1	G40026100006	WASHER M6	2							
69	1	G40027100006	WASHER M6	2							
70	1	G40020100006	NUT M6	2							
71	1	G42385201260	SWITCH	1							
72	1	G40020400014	NUT M14XP1.5	1							
73	1	G4194-00024	CLIP 22,U-SHAPED	1							
74	1	G40027100006	WASHER M6	1							
75	1	G40010100612	BOLT M6*12	1							
76	1	G4194-00008	CLIP 8,U-SHAPED	1							
77	1	G40027100006	WASHER M6	1							
78	1	G40020100006	NUT M6	1							
79	1	G4194-00012	CLIP 12,U-SHAPED	2							
80	1	G40027100006	WASHER M6	2							
81	1	G40020100006	NUT M6	2							
82	1	G4ML40-0019	TIE,INSULOCK	1							
83	1	G4194-00012	CLIP 12,U-SHAPED	2							
84	1	G40027100006	WASHER M6	1							
85	1	G40020100006	NUT M6	1							
86	1	G4194-00022	CLIP 22,U-SHAPED	1							
87	1	G40027100006	WASHER M6	1							
88	1	G40020100006	NUT M6	1							
89	1	G4194-00025	CLIP 25,U-SHAPED	1							
90	1	G40027100006	WASHER M6	1							
91	1	G40010100612	BOLT M6*12	1							
92	1	G4194-00015	CLIP 15,U-SHAPED	2							
93	1	G40027100006	WASHER M6	2							
94	1	G40020100006	NUT M6	2							
95	1	G4194-00025	CLIP 25,U-SHAPED	1							
96	1	G40010100612	BOLT M6*12	1							
97	1	G40027100006	WASHER M6	1							
98	1	G4194-00012	CLIP 12,U-SHAPED	1							
99	1	G40010100612	BOLT M6*12	1							
100	1	G40027100006	WASHER M6	1							
101	1	G40020100006	NUT M6	1							
102	1	G41222221000	COVER,ENGINE BASE	1							

N:Old $\begin{matrix} \text{Yes} \\ \text{No} \end{matrix}$ New, Q:Old $\begin{matrix} \text{No} \\ \text{Yes} \end{matrix}$ New, R:Old $\begin{matrix} \text{Yes} \\ \text{No} \end{matrix}$ New, S:Old $\begin{matrix} \text{No} \\ \text{Yes} \end{matrix}$ New, W:Add, Z:Discontinued, F:Interchangeable by set, K:Q'ty Change
++ CONTINUE ++

Fig.20. ENGINE RELATED

20. ENGINE RELATED



OCNP3-G66100 20. ENGINE RELATED

(A)=YRM831VH

(B)=

(C)=

(D)=

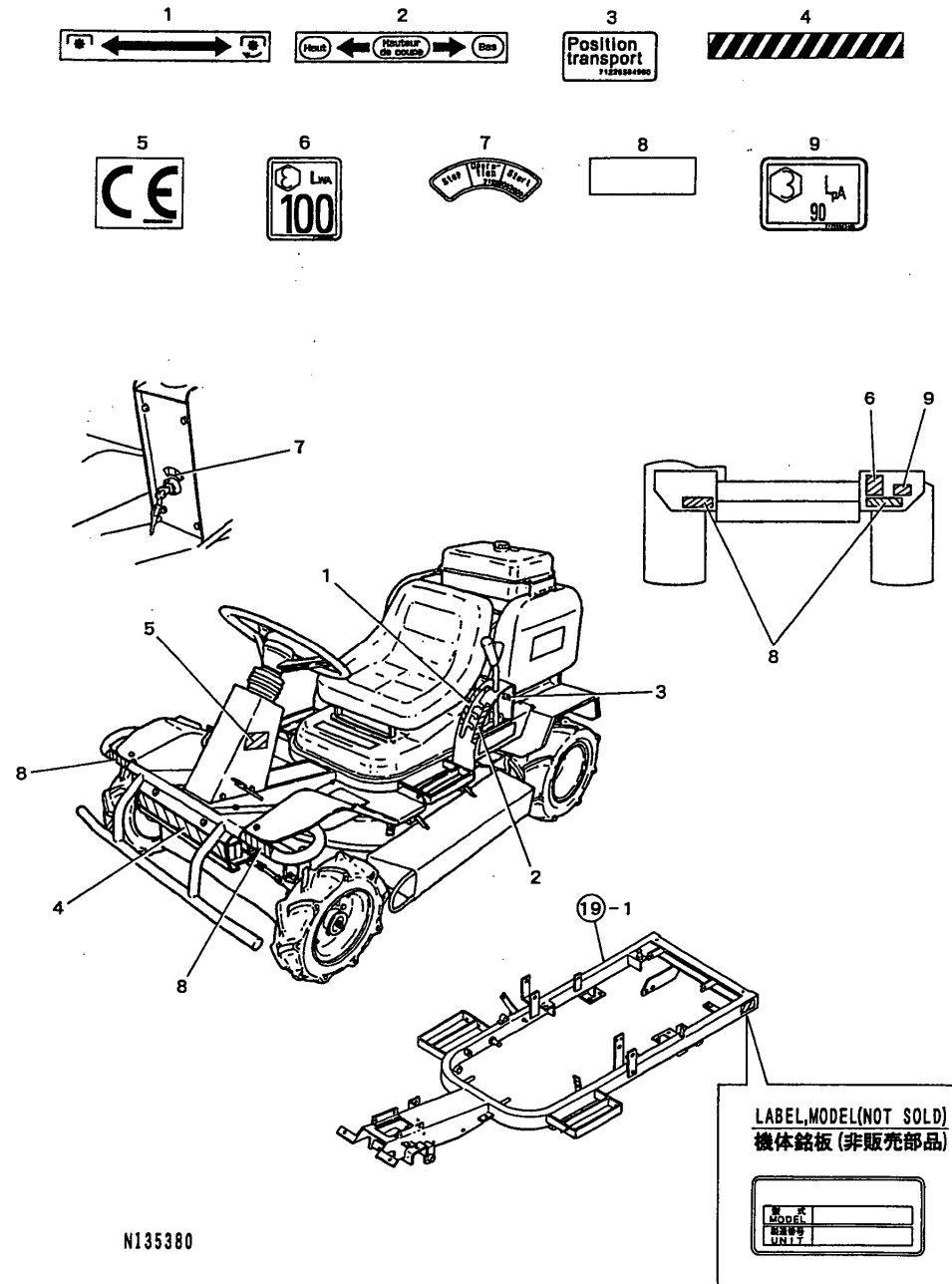
(E)=

(F)=

REF.	LEV.	PARTS NO.	DESCRIPTION	Q'TY						I	R
				(A)	(B)	(C)	(D)	(E)	(F)		
103	1	G40010100816	BOLT M6*16	2							
104	1	G40027100008	WASHER M8	2							
105	1	G41222260900	HINGE	1							
106	1	G40010100816	BOLT M6*16	4							
107	1	G40027100008	WASHER M8	4							
108	1	G41222225200	COVER A,MUFFLER	1							
109	1	G41222225300	COVER B,MUFFLER	1							
110	1	G40010100816	BOLT M6*16	2							
111	1	G40027100008	WASHER M8	2							
112	1	G40026100008	WASHER M8	4							
113	1	G40100000016	BOLT M8*30	4							
114	1	G40027100008	WASHER M8	4							

Fig.21. LABELS

21. LABELS



N135380

(A)=YRM831VH

(B)=

(C)=

(D)=

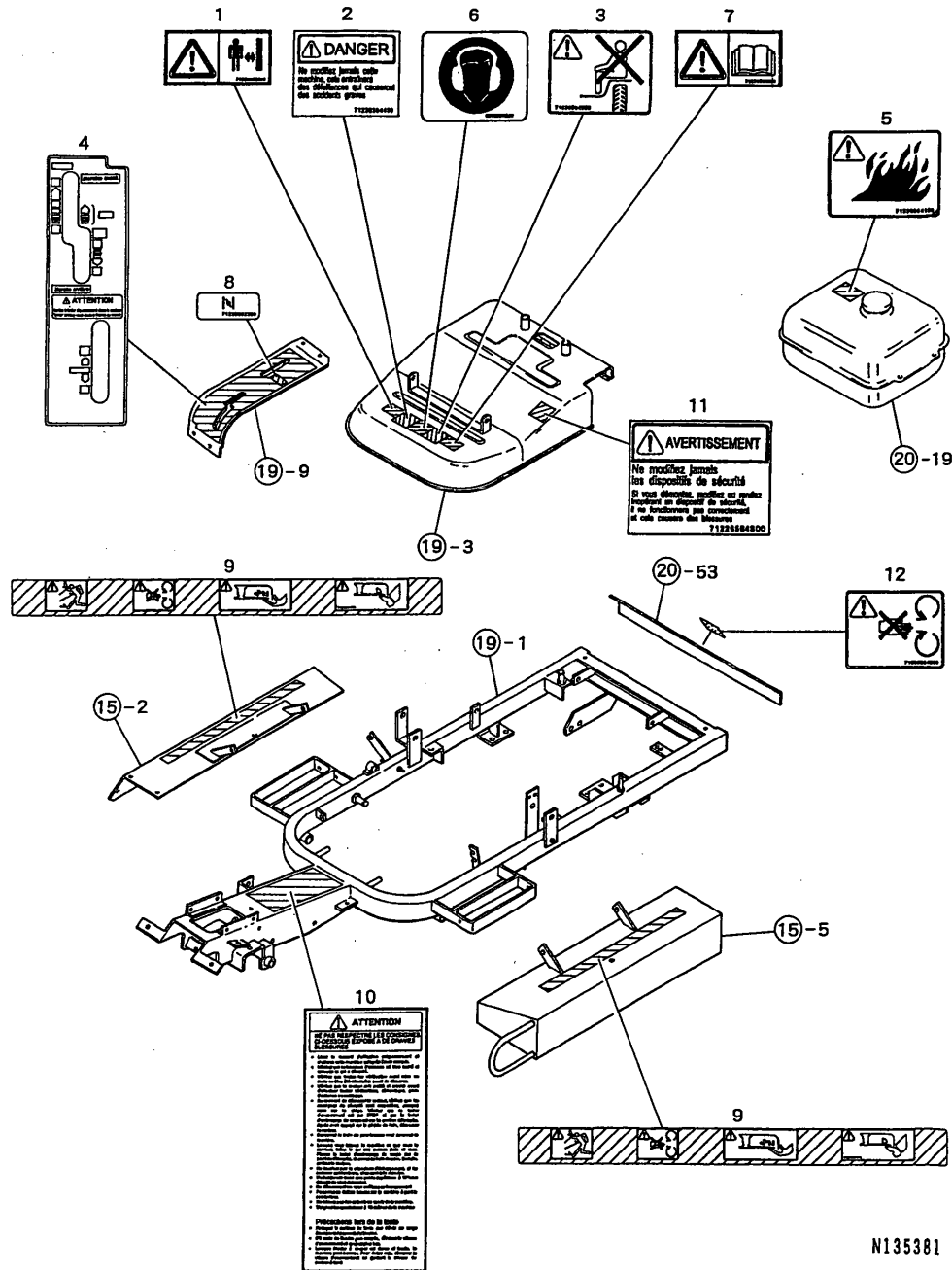
(E)=

(F)=

REF.	LEV.	PARTS NO.	DESCRIPTION	QTY						I	R
				(A)	(B)	(C)	(D)	(E)	(F)		
1	1	G41226563200	MARK,REAPING CLUTCH	1							
2	1	G41226565000	MARK,CUTTING HEIGHT	1							
3	1	G41226564900	MARK,POSITION TRANS.	1							
4	1	G41216566400	MARK,BLK.& YEL.STRP.	1							
5	1	G40736561200	MARK "CE"	1							
6	1	G41226565500	MARK,SOUND LEVEL	1							
7	1	G41226563400	MARK,KEY SWITCH	1							
8	1	G46316391000	TAPE,REFLECTION	4							
9	1	G41226565400	MARK,SOUND LEVEL	1							

Fig.22. LABELS(PRODUCT LIABILITY)

22. LABELS(PRODUCT LIABILITY)



N135381

OCNP3-G66100 22. LABELS(PRODUCT LIABILITY)

(A)=YRM831VH

(B)=

(C)=

(D)=

(E)=

(F)=

REF.	LEV.	PARTS NO.	DESCRIPTION	QTY						I	R
				(A)	(B)	(C)	(D)	(E)	(F)		
1	1	G41226565300	MARK,KEEP AWAY.	1							
2	1	G41226564400	MARK,NOT ALTER.	1							
3	1	G41226564600	MARK,NOT RIDEDOUBLE.	1							
4	1	G41226564200	MARK,CONTROL	1							
5	1	G41226564100	MARK,FIRE	1							
6	1	G40736561300	MARK,NOIZE	1							
7	1	G41226565200	MARK,MANUAL	1							
8	1	G41226562200	MARK,CHOKE	1							
9	1	G41226564300	MARK,CAUTION:ROTARY	2							
10	1	G41226564700	MARK,CAUTION:FLAME	1							
11	1	G41226564800	MARK,SAFETY DEVICE	1							
12	1	G41226564500	MARK,ROTARY OBJECT.	1							

N:Old $\begin{matrix} \text{Yes} \\ \text{No} \end{matrix}$ New, Q:Old $\begin{matrix} \text{No} \\ \text{Yes} \end{matrix}$ New, R:Old $\begin{matrix} \text{Yes} \\ \text{No} \end{matrix}$ New, S:Old $\begin{matrix} \text{No} \\ \text{Yes} \end{matrix}$ New, W:Add, Z:Discontinued, F:Interchangeable by set, K:Q'ty Change

Part Number Index

All parts are stipulated in the order of part numbers.

(Depending on the area in which the part is used.)

This index will display the location of the part according to each part number.

PARTS No. INDEX

PARTS No.	Fig.	Ref.No.
1Z0014-06350	7	27
1Z0070-61000	10	31
		32
1Z0070-81000	10	33
1Z1100-32101	8	5
1Z1100-42096	1	1
1Z1100-86026	1	2
1Z1100-92024	8	6
1Z1100-92115	10	20
1Z1100-92175	4	1
1Z1100-92346	4	2
1Z1100-92433	1	4
1Z1100-92505	9	1
1Z1100-92526	10	12
1Z1100-92763	10	3
1Z1100-92764	10	4
1Z1100-92947	1	5
1Z1101-02421	9	3
1Z1101-12227	9	4
1Z1101-22189	3	1
1Z1101-22223	9	6
1Z1101-22251	9	12
1Z1101-32109	9	7
1Z1101-32141	9	8
1Z1102-22070	1	6
1Z1104-62160	9	9
1Z1104-72028	7	9
1Z1106-02339	8	1
1Z1106-02340	8	2
1Z1106-02341	8	3
1Z1106-02382	9	2
1Z1106-02446	9	5
1Z1200-42097	3	2
1Z1200-52086	3	3
1Z1200-92058	3	4
1Z1200-92060	3	5
1Z1201-12052	3	6
1Z1201-62054	3	7
1Z1201-62055	3	8
1Z1202-02058	3	9
1Z1203-22068	3	10
1Z1300-12130	2	1
1Z1300-22078	2	3
1Z1300-86053	2	4
1Z1302-56020	2	5
1Z1302-92106	2	2
1Z1304-26010	2	6
1Z1308-12085	11	2
1Z1309-12068	11	3
1Z130B-05080	7	17

PARTS No.	Fig.	Ref.No.
1Z130B-05080	10	26
1Z130B-05200	6	22
1Z130B-06140	1	20
	4	22
1Z130B-08300	4	23
1Z130G-06120	5	13
1Z130T-08450	1	22
1Z1310-72088	2	8
1Z1311-62056	3	11
1Z1316-82131	11	4
1Z1318-32252	8	7
1Z1325-16039	2	9
1Z1325-16041	2	11
1Z1327-02054	4	3
1Z1327-02055	1	7
1Z1402-42294	5	1
1Z1403-72104	5	2
1Z1404-32070	10	13
1Z1500-32329	8	4
1Z1600-72052	3	12
1Z1601-42010	8	8
1Z1602-02109	8	9
1Z1602-52137	8	12
1Z1603-02067	8	13
1Z1603-12066	8	14
1Z1603-52056	8	15
1Z1603-52058	8	16
1Z1603-80240	8	17
1Z1604-12163	8	18
1Z1604-12215	8	19
1Z1606-06001	8	43
1Z1607-32098	11	5
1Z1607-36001	8	44
1Z1608-22059	4	4
1Z1612-62113	1	8
1Z1612-62170	8	20
1Z1614-22068	4	5
1Z1614-62077	11	6
1Z1614-62106	11	7
1Z1615-42052	4	6
1Z1616-92130	7	1
1Z1617-12079	7	2
1Z172G-61150	8	49
1Z1807-72052	9	13
1Z2103-92059	11	8
1Z2104-02052	11	9
1Z2106-61020	6	1
1Z2108-02054	11	10
1Z2111-82083	3	15
1Z2112-12086	6	2

PARTS No.	Fig.	Ref.No.
1Z2113-02066	6	3
1Z2116-32073	11	1
1Z2116-92004	6	4
1Z2118-72055	7	3
1Z2118-82010	8	21
1Z2119-32154	6	5
1Z214B-04120	7	18
1Z214B-04200	7	19
1Z221C-05120	10	28
1Z224B-04080	5	15
1Z224B-05080	8	50
1Z224B-06160	5	16
1Z224B-06200	6	23
1Z2601-12233	8	45
1Z2601-12331	6	6
1Z2700-52056	6	7
1Z2700-82055	6	8
1Z2701-02122	11	11
1Z3106-46001	4	7
1Z3208-52097	11	12
1Z3900-32073	7	4
1Z3912-92011	7	5
1Z410B-12000	10	30
1Z4203-62060	7	6
1Z4302-82068	10	5
1Z4302-82069	10	6
1Z4610-22077	2	13
1Z4900-22107	1	3
1Z4901-56174	1	9
1Z4901-92107	10	1
1Z4904-02066	10	2
1Z4906-22057	9	10
1Z4906-52073	4	10
1Z4906-52078	4	9
1Z4906-92209	9	11
1Z4907-82076	3	13
1Z4908-92231	5	3
1Z4908-92232	5	4
1Z4908-92233	5	5
1Z4910-52096	10	9
1Z4910-62471	9	14
1Z4911-02084	7	7
1Z4911-32098	7	8
1Z4911-62055	10	7
1Z4911-82132	3	14
1Z4911-92176	2	14
1Z4912-06106	1	10
1Z4912-12188	8	22
1Z4912-32075	8	23
1Z5100-12258	10	10

PARTS No.	Fig.	Ref.No.
1Z5102-32163	10	11
1Z5103-62073	10	14
1Z5104-82052	10	19
1Z5200-52100	10	23
1Z5200-52105	4	11
1Z5502-02099	5	6
1Z5603-02390	12	1
1Z5603-12441	12	2
1Z5603-12442	13	1
1Z5603-82504	12	3
1Z5903-12086	6	9
1Z5904-12087	5	7
1Z5905-62090	4	12
1Z5905-62101	2	15
1Z5906-62564	5	8
1Z5907-12063	4	13
1Z5923-12062	4	14
1Z670D-20160	4	27
1Z9200-22263	2	43
1Z9200-22269	7	21
1Z9200-22273	1	11
1Z9200-22274	9	17
1Z9200-22277	11	14
1Z9200-22310	1	12
1Z9200-42083	1	13
1Z9200-92004	10	15
1Z9200-92015	8	10
1Z9200-92021	10	21
1Z9200-92080	8	24
1Z9200-92081	8	25
1Z9200-92113	7	20
1Z9200-92166	9	15
1Z9200-92182	3	18
1Z9200-92212	10	8
1Z9200-92244	8	26
1Z9200-92308	1	14
	6	10
1Z9201-51193	2	16
	8	46
1Z9201-52120	7	10
1Z9201-52139	3	19
1Z9201-52146	11	15
1Z9201-52147	11	16
1Z9201-52167	6	11
1Z9202-22194	2	42
1Z9202-22218	11	17
1Z9202-22220	9	18
1Z9202-22229	6	12
1Z9202-22231	8	27
1Z9202-52003	5	9

PARTS No. INDEX

PARTS No.	Fig.	Ref.No.
1Z9202-52210	2	17
1Z9202-52211	2	18
1Z9202-52212	2	19
1Z9202-52213	2	20
1Z9202-52214	2	21
1Z9202-52215	2	22
1Z9202-52216	2	23
1Z9202-52217	2	24
1Z9202-52218	2	25
1Z9202-52219	2	26
1Z9202-52220	2	27
1Z9202-52221	2	28
1Z9202-52222	2	29
1Z9202-52223	2	30
1Z9202-52224	2	31
1Z9202-52225	2	32
1Z9202-52226	2	33
1Z9202-52227	2	34
1Z9202-52228	2	35
1Z9202-62156	2	36
1Z9202-62160	2	37
1Z9202-72003	8	28
1Z9202-72025	8	29
1Z9203-32067	8	30
1Z9203-32081	11	13
1Z9203-60080	2	38
1Z9203-72012	8	47
1Z9203-72020	7	11
1Z9203-72063	6	13
1Z9203-72177	6	14
1Z9203-72199	4	15
1Z9203-72200	4	16
1Z9203-82094	2	39
	6	15
1Z9203-82101	2	40
1Z9204-31263	1	15
1Z9204-31266	1	16
1Z9204-32006	8	31
1Z9204-32113	3	16
1Z9204-92096	1	17
1Z9204-92097	1	18
1Z9204-92223	3	20
1Z9204-92227	1	19
1Z9205-51299	10	16
1Z9205-52072	2	41
1Z9205-52073	4	17
1Z9205-52083	10	17
1Z9206-32257	8	32
1Z9206-42101	8	33
1Z9206-62092	4	18

PARTS No.	Fig.	Ref.No.
1Z9206-62211	4	8
		28
1Z9207-02075	6	16
1Z9207-12099	6	17
1Z9207-12112	6	18
1Z9207-15170	6	19
1Z9208-12009	8	11
		34
1Z9208-12036	10	22
1Z9208-12316	7	12
1Z9209-32069	8	35
1Z9209-32082	8	36
1Z9214-12112	2	7
1Z9214-32006	7	23
1Z9214-32142	8	37
1Z9214-32179	5	10
1Z9214-32182	5	11
1Z9214-42033	7	24
1Z9214-42037	8	38
1Z9214-42043	10	18
1Z9214-42160	8	39
1Z9214-42220	7	13
1Z9214-42266	7	14
1Z9214-42281	7	15
1Z9214-42323	3	17
1Z9214-42391	4	19
1Z9215-02182	7	16
1Z9215-02193	2	10
		12
1Z9217-02023	8	40
1Z9217-02081	6	20
1Z9217-02087	10	24
1Z9217-02088	10	25
1Z9219-02011	8	41
1Z9219-02066	8	48
1Z9219-02167	6	21
1Z9220-02029	7	25
1Z9220-02035	4	20
1Z9220-02036	7	22
1Z9220-02070	7	26
G40000006060	20	67
G40010100612	14	92
	20	75
		91
		96
		99
G40010100614	20	32
G40010100616	17	40
		44
		53

PARTS No.	Fig.	Ref.No.
G40010100816	14	1 G
		2 G
		7
		89
	15	36
		97
	17	2 G
		7 G
		66
	19	7
		14
		19
		27
		35
		39
		52
		68
	20	20
		28
		54
		103
		106
		110
G40010100820	14	9
		20
	15	11
		55
		70
		87
		90
		101
		104
	16	39
		44
	19	10
		22
		30
		43
	20	17
		49
G40010100825	15	7
		15
		19
G40010100860	14	66
G40010101020	17	4
		9
G40010101025	15	33
	20	3
		14
G40010101030	19	47

PARTS No.	Fig.	Ref.No.
G40010101035	14	35
G40010101080	17	17
		21
G40010101090	16	34
G40010110620	14	59
G40010110830	14	45
G40010111025	15	41
G40010111030	17	12
G40010210830	14	43
		67
G40015100315	15	60
	18	54
G40015100610	19	5
G40020100003	15	62
	18	56
G40020100006	17	47
	20	59
		70
		78
		81
		85
		88
		94
		101
G40020100008	14	1 H
		2 H
		28
		29
		55
	15	10
		14
		18
		22
		57
		66
		71
		98
	16	43
		47
	17	2 H
		7 H
		58
		60
		84
	18	6
		10
		13
		21
		23
		26

PARTS No. INDEX

PARTS No.	Fig.	Ref.No.	
G40020100008	18	28	
		31	
		36	
		42	
		59	
		61	
		76	
		79	
		83	
		109	
		19	13
			17
			25
			33
			60
		20	70
			48
50			
G40020100010	14	16	
		36	
		38	
		70	
		75	
		15	94
			16
		16	35
			41
			17
		17	20
			24
			48
		19	48
			16
			23
		20	38
16			
G40020100012	16	5	
	18	4	
G40020138016	18	4	
G40020200014	14	99	
G40020200016	16	4	
G40020210016	15	43	
G40020400014	19	65	
	20	46	
G40022400010	14	13	
		16	12
		15	15
		17	17
G40022400012	14	26	
		32	32
		15	89
G40024500008	15	89	
G40026100006	14	84	
		94	94
		15	73
G40026100006	15	77	
		77	77

PARTS No.	Fig.	Ref.No.			
G40026100006	15	80			
		83			
		17	34		
			42		
			45		
		18	77		
			66		
			81		
			88		
			11		
		20	61		
			68		
			58		
		G40026100008	14	91	
				15	8
					12
				16	16
20					
37					
92					
100					
103					
45					
17	70				
74					
81					
82					
19	88				
	11				
	15				
G40026100010	16	21			
		23			
		29			
		31			
		37			
		41			
		45			
		56			
		21			
		56			
17	112				
	19				
	14				
G40026100012	14	18			
		22			
		18	95		
		97	97		
G40026100012	14	34			
		20	39		
G40026100014	14	101			

PARTS No.	Fig.	Ref.No.		
G40026100020	14	24		
		19	63	
G40027100003	15	61		
		18	55	
		14	60	
G40027100006	14	93		
		41		
		46		
		52		
		17	6	
			33	
		19	60	
			69	
			74	
			77	
			80	
			84	
			87	
			90	
			93	
			97	
		G40027100008	14	100
1 J				
2 J				
8				
10				
30				
44				
46				
57				
65				
G40027100010	15	68		
		90		
		9		
		13		
		17		
		21		
		56		
		67		
		88		
		91		
G40027100012	16	99		
		102		
		105		
		42		
		46		
		17	2 J	
			7 J	
			59	
		G40027100012	14	33
		G40027100014	15	50

PARTS No.	Fig.	Ref.No.	
G40027100008	17	83	
		18	7
			12
		22	
		27	
		30	
		32	
		38	
		41	
		60	
		77	
		19	8
			12
			16
			20
			24
			28
32			
36			
40			
44			
20	53		
	57		
	61		
	69		
	7		
	18		
	22		
	29		
	51		
	55		
G40027100010	14	104	
		107	
		111	
		114	
		17	
		76	
		15	32
			42
			95
		16	40
5			
10			
17	13		
	19		
	23		
20	4		
	15		
	15		
G40027100012	14	33	
		15	50

PARTS No. INDEX

PARTS No.	Fig.	Ref.No.
G40027100012	20	37
G40027100014	14	100
G40027100016	15	44
G40027114020	17	37
G40027138016	18	3
G40027151618	17	26
		32
	18	64
G40030300320	18	71
G40030300325	18	43
G40030300332	18	50
G40030300420	18	105
G40030300520	18	72
G40030300525	18	44
G40030300532	18	51
G40030300625	16	29
G40030303525	16	30
G40031199006	14	85
	15	74
		78
		81
		84
	17	35
		78
	18	37
		67
		82
		89
	20	12
G40031199008	17	71
		75
G40031199010	16	20
	18	96
		98
G40036100015	14	82
G40036100020	14	23
G40036500032	17	50
		63
G40036500035	14	81
G40036500062	15	27
G40036800006	15	4
G40036800010	16	37
	18	47
G40036800012	15	63
	16	7
		9
	17	55
	18	16
		35
		92

PARTS No.	Fig.	Ref.No.
G40036800012	18	93
		102
		103
G40036800015	17	68
G40060670000	14	26
G40064500100	15	23
G40080320027	17	87
G40080320076	17	86
G400MB1420DU	18	15
G400MB1610DU	18	17
		18
G400MB1615DU	17	72
G400MB1620DU	14	22
G400MB2025DU	14	25
G40100000015	20	6
G40100000016	14	27
		80
	18	108
	20	47
		113
G40100000046	20	36
G40100000088	16	49
G40101050870	14	56
G40150516010	17	31
G40150516025	18	65
G40151140015	17	38
G40151516020	17	25
G40160000506	14	54
G40200000021	18	8
		34
		85
G40200000062	14	40
		72
G40265000012	20	40
G402852212	20	41
G40300000002	15	30
G4030-10008	17	64
	20	5
		8
G4030-10010	20	16
G4030103225S	15	51
G40315260000	20	42
G40329060000	20	52
G4040106007A	15	25
G4040146004A	17	85
G4040146201A	17	49
		62
G4040146202A	14	80
G4040146204A	14	4
G4040146206A	15	26

PARTS No.	Fig.	Ref.No.
G40430010120	14	77
G40500003002	17	28
		29
G40600030627	15	28
G40600356210	15	29
G40701860600	19	50
G40736561200	21	5
G40736561300	22	6
G40905260000	19	55
G4106011	17	43
G41200220000	14	3
G41200220100	14	6
G41200220500	17	1
		6
G41200260100	14	2
G41200260101	14	1 A
		2 A
G41200260102	14	1 B
		2 B
G41200260103	14	1 C
		2 C
G41200260104	14	1 D
		2 D
G41200260105	14	1 E
		2 E
G41200260106	14	1 F
		2 F
G41200260200	14	1
G41200260300	17	2
G41200260301	17	2 A
		7 A
G41200260302	17	2 B
		7 B
G41200260303	17	2 C
		7 C
G41200260304	17	2 D
		7 D
G41200260305	17	2 E
		7 E
G41200260306	17	2 F
		7 F
G41200260400	17	7
G41200260700	17	3
		8
G41201150000	19	3
G41201150700	20	53
G41202120200	17	61
G41202120400	17	48
G41202220600	17	79
G41202220800	20	31

PARTS No.	Fig.	Ref.No.
G41202261001	20	9
G41203020000	17	15
G41203020100	17	39
G41203020200	17	33
G41203060000	17	27
G41203060100	17	16
G41205320200	15	3
G41205320400	15	24
G41205320900	15	53
G41205321400	15	75
G41205360100	15	59
	18	53
G41205360200	17	76
G41205360300	15	79
G41206020100	18	9
G41206020200	18	14
G41206020400	18	40
G41206020500	18	45
G41206020600	20	35
G41206020700	20	43
G41206020800	18	48
G41206020900	18	49
G41206021000	18	78
G41206021100	18	57
G41206060000	18	46
G41206120400	14	52
G41206120500	14	51
G41206120600	14	37
		71
G41206121000	14	63
G41206121200	14	74
G41206160000	14	95
G41206160100	14	96
G41206160200	14	98
G41206160300	14	83
G41206220200	16	10
		13
G41206220700	16	32
G41206260000	16	33
G41206320200	18	68
G41206320300	18	70
		73
G41206320400	18	75
G41206320500	18	86
G41206320700	18	91
G41206320800	18	94
G41206320900	18	99
G41206321000	18	101
G41206321100	18	104
G41206321300	18	69

PARTS No. INDEX

PARTS No.	Fig.	Ref.No.
G41206321400	18	107
G41206360000	18	100
G41206420000	19	59
G41206420100	19	62
G41206420200	19	64
G41206420300	20	44
G41207020100	14	53
G41207020200	14	79
G41208020100	20	58
G41208163300	20	64
G41208163400	20	65
G41208165200	20	63
G41208169000	20	66
G41211120300	20	57
G41215320300	15	6
G41216020100	18	33
G41216021000	18	19
		24
G41216220100	16	1
G41216220200	16	2
G41216220300	16	3
G41216220400	16	6
		8
G41216220600	16	21
G41216220700	16	22
G41216220800	16	27
G41216220900	16	28
G41216566400	21	4
G41220220100	14	21
G41220220200	17	11
G41220220300	14	31
G41220220900	14	15
G41220221000	14	14
G41220260200	14	5
G41220260400	14	18
G41221050400	19	1
G41221120200	19	18
G41221120300	19	26
G41221121000	19	42
G41221121100	19	34
G41221121200	19	38
G41221150100	19	9
G41221820100	19	46
G41221820200	19	67
G41222121000	17	67
G41222121200	17	54
G41222220600	14	88
G41222221000	20	102
G41222224800	20	2
G41222225100	20	13

PARTS No.	Fig.	Ref.No.
G41222225200	20	108
G41222225300	20	109
G41222250100	20	19
G41222260300	20	24
G41222260400	20	26
G41222260500	20	27
G41222260900	20	105
G41222261000	20	23
G41225320200	15	52
G41225320500	15	96
G41225320600	15	68
G41225320700	18	74
G41225320900	15	38
G41225321100	15	1
G41225321400	15	86
G41225321500	15	34
G41225321600	15	35
G41225321700	15	58
G41225351200	15	2
G41225351300	15	5
G41225360300	15	54
G41225361100	15	40
G41225362000	15	46
G41225362100	15	85
G41226120100	14	86
G41226120200	14	87
G41226220100	16	38
G41226220200	16	31
G41226220300	16	36
G41226320300	18	90
G41226562200	22	8
G41226563200	21	1
G41226563400	21	7
G41226564100	22	5
G41226564200	22	4
G41226564300	22	9
G41226564400	22	2
G41226564500	22	12
G41226564600	22	3
G41226564700	22	10
G41226564800	22	11
G41226564900	21	3
G41226565000	21	2
G41226565200	22	7
G41226565300	22	1
G41226565400	21	9
G41226565500	21	6
G41228160300	20	62
G41301160200	19	71
G41305322400	16	18

PARTS No.	Fig.	Ref.No.
G41305360300	15	47
G41305360500	15	48
G41306120200	14	64
G41306120300	14	42
G41306160100	14	97
G41312220100	20	1
G41316020100	18	1
G41316221400	16	48
G41316320100	18	63
G41316320200	18	62
G4194-00008	20	76
G4194-00012	20	79
		83
		98
G4194-00015	20	92
G4194-00022	20	86
G4194-00024	20	73
G4194-00025	20	89
		95
G4200000012L	16	24
G42385200730	19	66
		20
		45
G42385201260	20	71
G42399111040	17	30
G42737220010	15	72
G44012100022	18	52
G44016111000	19	4
G44452041000	14	47
G44642100010	17	73
G44816282000	20	25
G46002201000	19	51
		58
G46002202000	15	49
G46030201000	15	31
G46032201000	16	11
		14
		16
		25
G46032201010	17	36
G46062104040	18	106
G46062105000	17	56
G46066030020	15	69
G46066070000	17	51
		20
		34
G46066080000	15	76
		82
		18
		80
		87
		20
		10
G46066530100	18	84

PARTS No.	Fig.	Ref.No.
G46102040000	19	54
G46316391000	21	8
G46376512000	19	49
G47002320010	15	39
G47022200010	20	30
G47076410000	14	39
		69
G47082200000	14	12
		18
		2
G47252110000	15	64
G47252221000	15	65
		17
		57
		18
		20
		25
		58
G47256410010	14	41
		73
G47256540010	14	48
		62
G47292461010	14	11
G47366621030	14	49
G47366621040	14	50
		61
G47366621080	14	78
G47392040000	15	45
G47396070000	15	93
G47396207000	19	2
G47862320000	14	19
G47862450020	17	69
G47876410000	18	11
		29
		39
G47876410010	18	5
G4ML40-0019	20	82



YANMAR CO.,LTD.